

Richmond Valley Solar Farm



A photograph of the project area

Development application on exhibition

The development application, environmental impact statement (EIS) and associated technical reports for the Richmond Valley Solar Farm have been lodged with the NSW Department of Planning, Housing and Infrastructure (DPHI), and are now available on the NSW Government's Major Projects website:

www.planningportal.nsw.gov.au/major-projects/projects/richmond-valley-solar-farm

The EIS responds to the Planning Secretary's Environmental Assessment Requirements (SEARs) and includes a comprehensive project description, maps and technical assessments by independent specialists including for:

- Social impacts
- Bushfire
- Water resources, including flooding
- Hazards and risks
- Visual amenity
- Glint and glare
- Traffic and transport
- Biodiversity
- Aboriginal cultural heritage
- Historic heritage
- Soils, land and agriculture
- Economic impacts
- Noise and vibration
- Cumulative impacts

The EIS is on exhibition for comment until Wednesday 21 August 2024.



Scan above QR code to access
Richmond Valley Solar Farm's page
in the NSW Major Projects Portal.

Location



The project area for the proposed Richmond Valley Solar Farm is near Myrtle Creek, approximately 7 km east of Rappville and 25 km south of Casino, in the Northern Rivers region of New South Wales.

The location is well suited for solar energy generation. The land was previously used for private forestry and is relatively flat. There is an excellent solar resource and it is close to the transmission network, with the Coffs Harbour to Lismore 330 kV powerline intersecting the north-west corner of the site.

The Richmond Valley Solar Farm proposal consists of a solar farm with a potential generation capacity of up to 500 MW and a battery energy storage system (BESS) with a power capacity of 275 MW and storage capacity of up to 2,200 MWh.

Information session – Wednesday, 14 August

A drop-in style information session will be held in Ellangowan during the EIS exhibition period to provide interested residents and community members with the opportunity to discuss the proposal with the project team. Printed copies of the EIS' executive summary will also be available.

Time: Open from 4pm to 6pm, Wednesday 14 August 2024

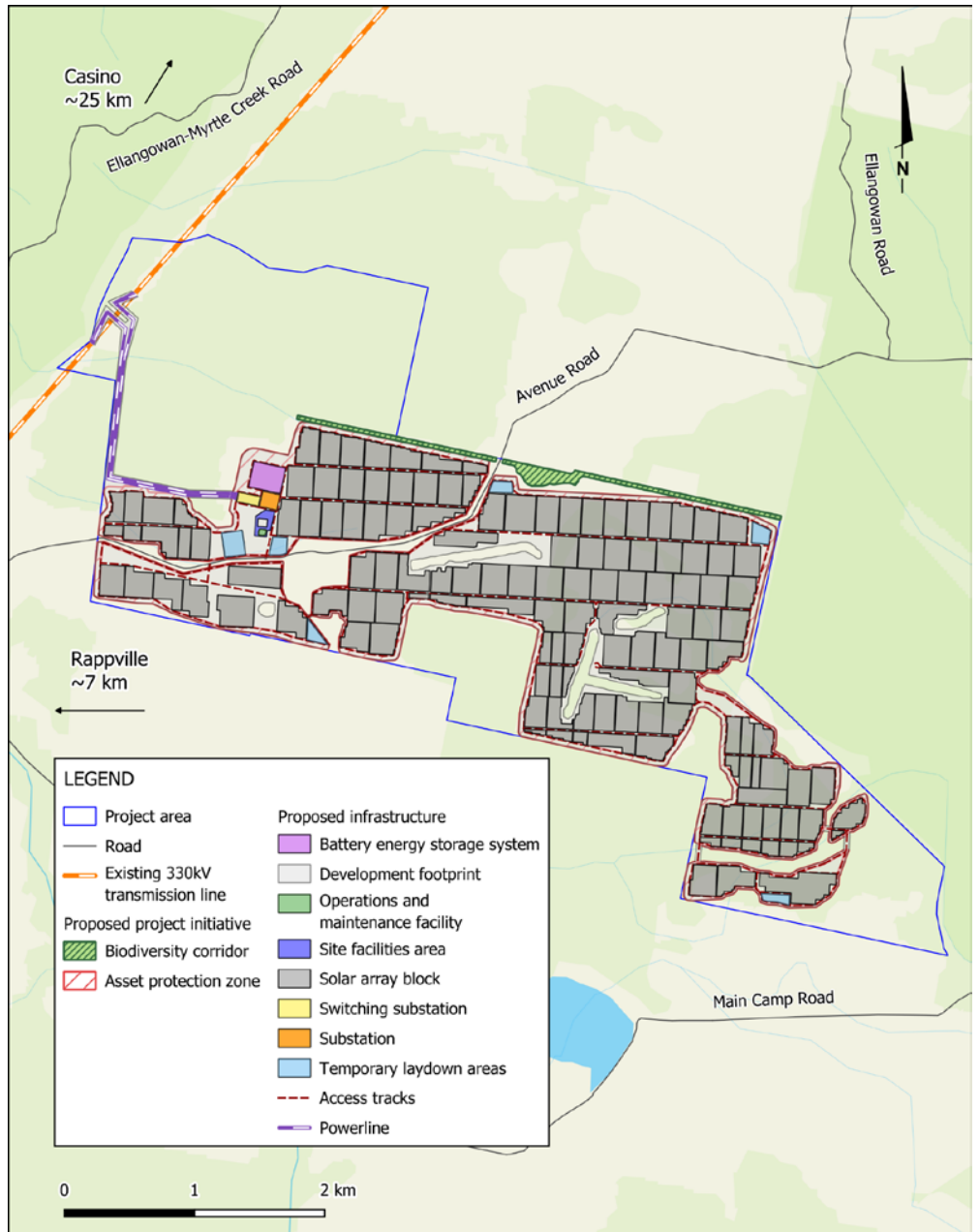
Location: Ellangowan Community Hall, 1630 Ellangowan Road

Everyone is welcome. Refreshments will be provided. To assist with catering please RSVP by Monday 12 August to info@richmondvalleysolar.com.au. We look forward to meeting attendees and the opportunity to answer any questions.

Planning & assessment

Utility-scale solar farms in NSW are considered State Significant Development and assessed by the NSW Department of Planning, Housing and Infrastructure (DPHI).

Richmond Valley Solar Farm proposed site layout



The map above shows the preliminary design for the Richmond Valley Solar Farm including solar panels, a powerline connection corridor, laydown areas and battery storage system.

1 Site selection and preliminary investigations ✓

2 Initial concept and consultation ✓

3 Scoping Report submitted to the former NSW Department of Planning and Environment (DPE) ✓

4 Planning Secretary's Environmental Assessment Requirements (SEARs) for the Environmental Impact Statement (EIS) issued by DPE ✓

5 Referral to the Australian Department of Climate Change, Energy, the Environment and Water (DCCEEW) for review under the Commonwealth *Environment Protection and Biodiversity Conservation Act 1999* (EPBC Act). ✓

6 Determination by DCCEEW - controlled action (Ref 2023/09641) ✓

7 Studies, assessments, design ✓

8 Finalising EIS for lodgment ✓

9 Development application (DA) and EIS lodged with DPHI (formerly DPE) ✓

10 DA and EIS on public exhibition for comment **WE ARE HERE**

11 Responses to submissions and requests for additional information (if required)

12 Assessment by DPHI

13 DPHI assessment report and recommendation

14 Final determination by DCCEEW

Community benefits

The Richmond Valley Solar Farm presents the opportunity for significant benefits for the local area including employment opportunities, work for contractors, increased patronage for local businesses, and a community benefit program.

The community benefit program will be designed in consultation to provide meaningful and lasting local benefits. We invite community members to share their views on priorities and suggestions for the program, by emailing these directly to the project team at info@richmondvalleysolar.com.au.

More information

Tel - 1800 731 296

Email - info@richmondvalleysolar.com.au

Register for e-newsletters - arkenergy.com.au/mailling-list-details

Website - richmondvalleysolar.com.au or scan the QR code right

