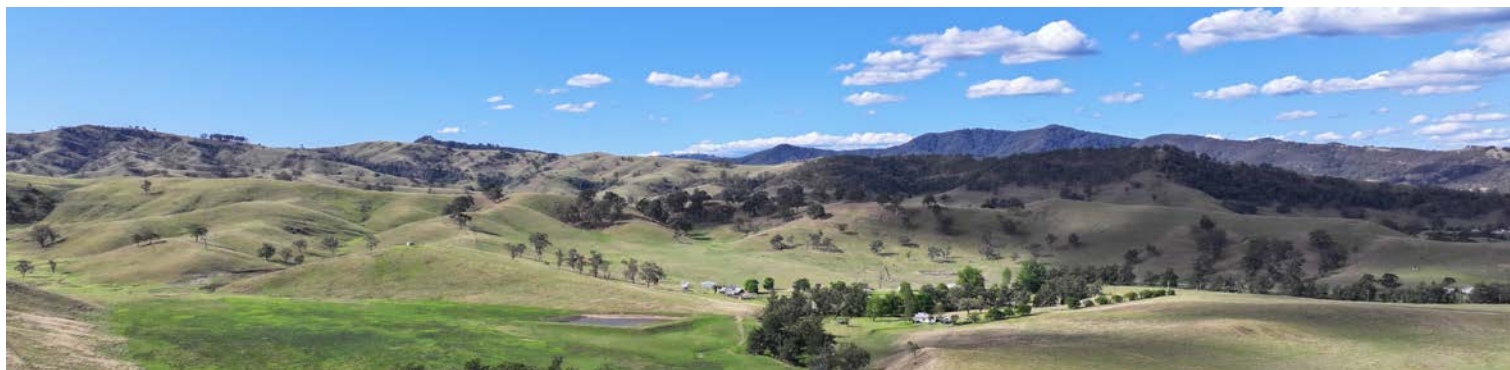


Bowmans Creek Wind Farm



Photograph of the project area

Stage 2 – Bowmans Creek Wind Farm

Ark Energy is preparing to lodge a Scoping Report for an extension to the Bowmans Creek Wind Farm near Muswellbrook in the Hunter-Central Coast Renewable Energy Zone.

The extension, called Bowmans Creek Wind Farm Stage 2, is proposed for land located in the centre of the project area for Bowmans Creek Wind Farm, which involves 54 wind turbines and was approved by the NSW Independent Planning Commission in February.

The extension would significantly boost the renewable energy output of the project and take advantage of planned infrastructure for the Bowmans Creek Wind Farm. It would add a further 21 wind turbines and ~120 megawatts of renewable energy generation capacity. *Please see map overleaf for location of proposed Stage 2.*

Separate approval required

Bowmans Creek Wind Farm Stage 2 will require separate approval from the NSW Government. Ark Energy is required to lodge a dedicated Scoping Report for the project, as well as make a separate referral for it to the Australian Department of Climate Change, Energy, the Environment and Water (DCCEEW) for review under the Commonwealth *Environment Protection and Biodiversity Conservation Act 1999* (EPBC Act).

The project team is working on the Scoping Report and EPBC Act referral, and it is estimated that these will be ready to lodge in Q2, 2024.

Local information session, Wednesday 3 April 2024

Prior to lodging the Scoping Report Ark Energy is hosting a local information session about Bowmans Creek Wind Farm Stage 2 at Mt Olive.

Interested residents and community members are invited to join the project team to learn more about the Stage 2 proposal. The session will involve a brief presentation and there will be plenty of opportunity for questions and discussion.

Time: 4:00-6:00pm, Wednesday 3 April 2024.

Location: Mt Olive Community Centre, 135 Carrowbrook Road, Mt Olive.

Refreshments will be provided. To assist with catering please RSVP to info@bowmanscreekwindfarm.com.au by Monday 1 April 2024.

Location



The project area for Bowmans Creek Wind Farm Stage 2 is approximately 12 km east of Muswellbrook, located within the original site in the Hunter-Central Coast Renewable Energy Zone.

- Additional 21 wind turbines
- Added output capacity of up to ~120 megawatts
- Added economic benefits due to increased investment and size of the overall project, including regional expenditure, employment opportunities and community benefits.

The Hunter region is significant to the NSW energy system and well placed to continue this tradition into the future through renewable energy generation.

Planning & assessment

Bowmans Creek Wind Farm Stage 2

Utility-scale wind farms in NSW are considered State Significant Development and assessed by the NSW Government.

1 Site selection and preliminary investigations

2 Initial concept and consultation

WE ARE HERE

3 Referral to the Australian Department of Climate Change, Energy, the Environment and Water (DCCEEW) for review under the Commonwealth *Environment Protection and Biodiversity Conservation Act 1999* (EPBC Act).

4 Scoping Report submitted to the NSW Department of Planning, Housing and Infrastructure (DPHI)

5 Determination on EPBC Act referral by DCCEEW

6 Secretary's Environmental Assessment Requirements (SEARs) for the Environmental Impact Statement (EIS) issued by DPHI

7 Studies, assessments, design

8 Finalising EIS for lodgment

9 Development application (DA) and EIS lodged with DPHI

10 DA and EIS on public exhibition and open for submissions

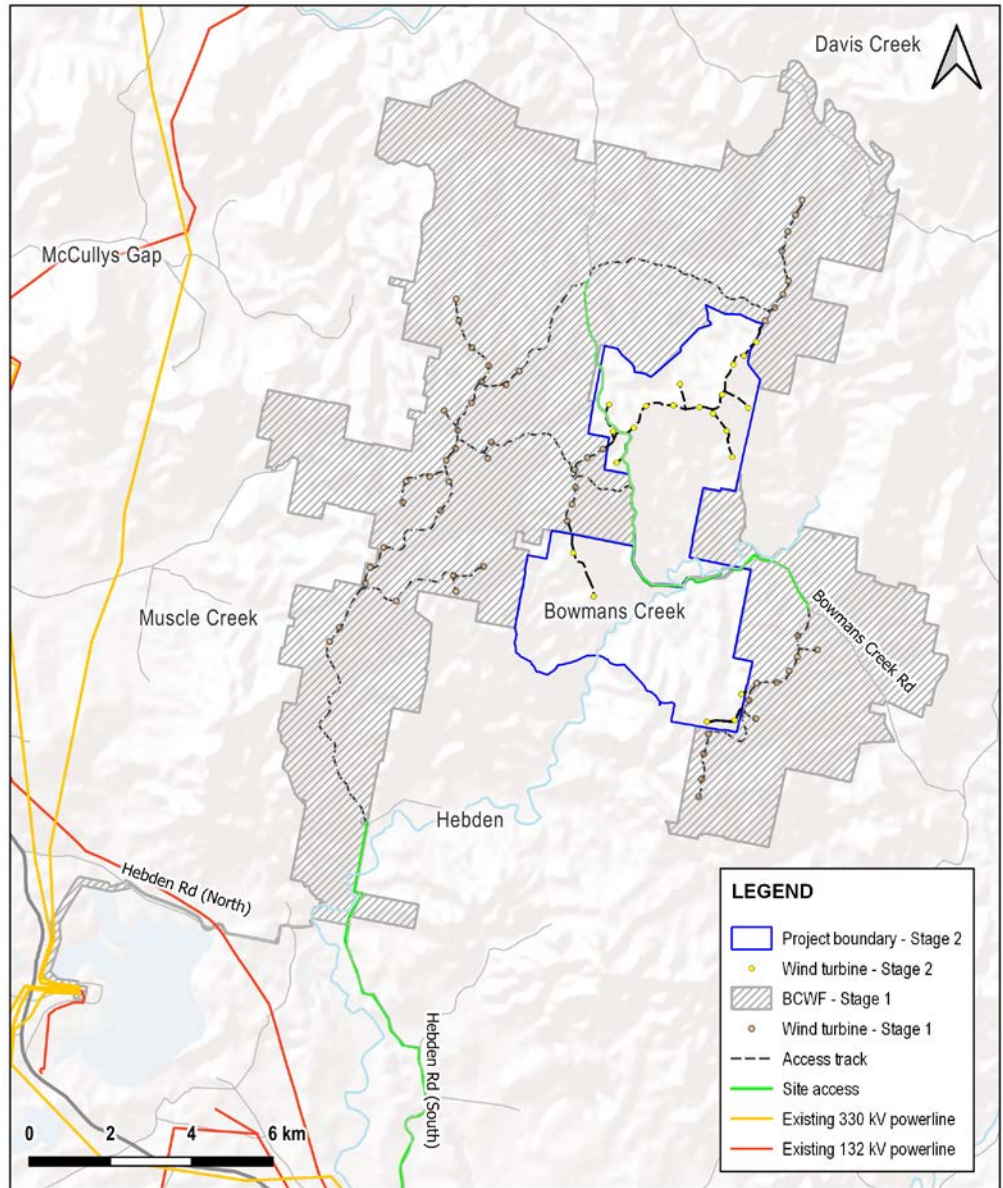
11 Response to submissions and requests for further information (if required)

12 Assessment by DPHI

13 DPHI assessment report and recommendation

14 Determination by DCCEEW

Bowmans Creek Wind Farm Stage 2 – proposed layout



The proposed design for Bowmans Creek Wind Farm – Stage 2 involves a layout of an additional 21 wind turbines in the centre of the project area.

Questions and feedback welcome

Ark Energy appreciates the importance of involving local stakeholders, and input from interested community members and other local stakeholders is welcome and valued.

Comments and feedback can be sent directly to the project team via the feedback form on the project website or the contact details below.

Where practicable local input will be factored into the project's design to improve outcomes and community benefits.

More information

Tel - 1800 731 296

Email - info@bowmanscreekwindfarm.com.au

Register for newsletters - arkenergy.com.au/mailling-list-details

Website - bowmanscreekwindfarm.com.au or scan QR code right



Scan QR code to visit the website