

Details for CCC meeting No 1
Venue: Warrumbungle Council Chambers
Address: 59 Binnia Street, Coolah
Date: Thursday 28 February 2013
Time: 2pm to 4pm

EPURON

**Liverpool Range Wind Farm
Community Consultation Committee
Meeting No 1
28 February 2013**

Presentation Contents

1. **Epuron**
 - About us
2. **Liverpool Range Wind Farm**
 - Project overview and current development status
3. **Draft NSW Wind Farm Planning Guidelines**
 - Overview of Guidelines and current position
4. **Community Consultation Committee**
 - Purpose, objectives and general proceedings
5. **Project Consultation**
 - Overview of project consultation plan
6. **Project Information**
 - The likely impacts – Assessment of key issues
 - Location and layout
 - The likely benefits
 - Other reference documents
7. **Next Steps and Timing**

Epuron – Background and History

- Founded 2003
- ~15 staff based in North Sydney
- 100% Australian-owned company
- In-house expertise in wind development; planning; grid; wind modelling; GIS; wind monitoring; instrumentation; solar PV design and construction
- Extensive wind monitoring network (>50 masts)

Track record of NSW wind farm developments

Cullerin Range	Sold to Origin: Operating	30MW
Snowy Plains	Sold to Origin: Approved (lapsed)	30MW
Conroys Gap	Approved	30MW
Gullen Range	Sold to Goldwind: Approved	73 turbines
Yass Valley	Seeking Approval	>100 turbines
Silverton	Sold to AGL Stage 1 Approved Stage 2 Concept Approved	<430MW 600+MW
White Rock	Approved	119 turbines
Eden	Seeking approval	7 turbines
Other	>10 sites under development	

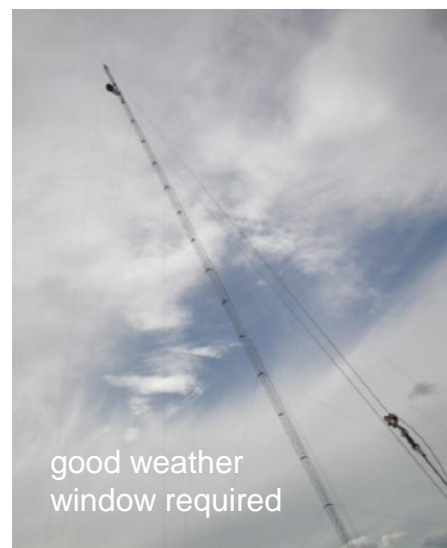
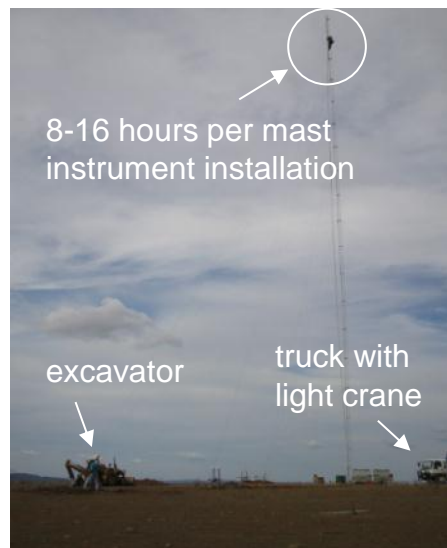


30MW Cullerin Range Wind Farm (Goulburn, NSW)

- Developed by Epuron
- Constructed by Origin Energy in 2008/09
- Peak workforce of 100, 60 from local area
- 15 x Repower turbines = 30MW
 - net yield 47% Jul to Dec 2009 – in top 3 wind sites in Australia
 - Highest yielding wind farm in National Electricity Market, 2010
- Community fund established

Epuron – Wind Monitoring Technology

Conventional approach – Met-mast



New approach – SODAR Fulcrum 3D



- ▶ Australian designed and built SODAR
- ▶ Range to 150m in 10m height bins
- ▶ Full3D wind data analysis
- ▶ Can be towed by any car (~350kg)
- ▶ Tow to site; level; switch on
- ▶ No weather delays

Liverpool Range Wind Farm – Project Overview

- Project located on freehold rural land between Coolah and Cassilis
- Stage 1 layout consists of up to 417 wind turbines and associated infrastructure
- Based on 3MW turbine will be 1,251MW project and ~\$1.8b-2.0b investment
- 5 masts (1 ref mast) monitoring wind across site (up to 3 years data) + 2 new sodars.
- Predicted wind speed and energy yield at hub height supports feasible development
- Turbine design envelope accommodates Siemens SWT3.0-113 or Vestas V112-3.0
- Proposed maximum turbine tip height 165m (~100m hub height and ~130m rotor)
- Grid connection at existing Transgrid 330kV transmission line at Ulan
- Project being assessed as Major Project under Part 3a of EP&A Act 1979
- Declared Critical Infrastructure Project under Section 75C of EP&A Act 1979
- Involved wind farm landowners secured under contract

Liverpool Range Wind Farm – Current Development Status

- Last project Newsletter released October 2012 – next one planned before Easter
- Spring / Summer environmental surveys completed in October 2012
- Archaeological field survey completed November 2012 including indigenous reps
- Photomontages prepared for uninvolved dwellings within 2 km of proposed turbine (3)
- Community Open Day held in Cassilis on 1 November 2012 – 73 people attended
- Environmental Assessment lodged with DPI on 7 December 2012
- DPI Adequacy Review received 25 February 2013
- Landowner agreement / negotiations continue (21)
- Transmission line agreement / negotiations continue
- Transgrid connection enquiry process is ongoing – 330 kV line at Ulan
- First CCC meeting held in Coolah on 28 February 2013

Draft NSW Wind Farm Planning Guidelines – Overview

- Draft NSW Wind Farm Planning Guidelines exhibited 23 Dec 2011 to 14 Mar 2012
- Government intends finalising Guidelines early 2013 (still outstanding)
- Policy Statement released 18 April 2012 identifying interim arrangements for existing State Significant Developments and transitional Part 3a wind farms
- The transitional arrangements vary depending on the stage of an application in the assessment and determination process

Stage 1 - New applications for which DGRs have been issued

Stage 2- Applications for which DGRs have been issued but are yet to be exhibited

Liverpool Range
Wind Farm



Stage 3 - Applications that have been exhibited but not yet determined

Stage 4 - Applications that have been approved

Community Consultation Committee - Purpose and Objectives

- To enable Epuron to formally provide the local community with information about the proposal;
- To enable the community to express and for Epuron to understand any concerns regarding the potential impacts of the proposal;
- To enable Epuron to consider whether and how to incorporate any suggestions and feedback into the design of the proposal;
- To demonstrate how and where feedback has been incorporated and resulted in amendments to the proposal;
- To formally advise potential community benefits that can be integrated into the proposal; and,
- To establish and strengthen good working relationships between the proponent and the local community.

Community Consultation Committee - Membership

- An independent chairperson;
 - Danielle Annells from Twyfords Consulting
- A representative of the involved wind farm landowners;
 - Ant Martin
 - Anne Louise Capel
- A representative of the non involved neighbouring landowners;
 - Linda Gant
 - Greg Piper
- A representative from a key local stakeholder group or association;
 - TBC as required
- A representative from local councils; and
 - Councillor Ron Campbell – Upper Hunter Shire Council
 - Tony Meppen (Director Environmental & Community Services) Warrumbungle Shire Council
 - Mid Western Regional & Liverpool Plains Council – TBC as required
- A representative from the proponent, Epuron
 - Brian Hall – Senior Project Manager

Community Consultation Committee – General Proceedings

- The Chairperson to set the agenda and convene and chair meetings
- The committee is not a decision-making body and it is not a requirement that consensus be reached on issues discussed
- Meeting proceedings should generally include;
 - Apologies
 - Declaration of pecuniary or other interests
 - Confirmation of the previous meeting minutes
 - Business arising from previous minutes
 - Correspondence
 - Proponent reports and overview of development activities
 - General business
 - Next meeting
- Minutes are to be kept of all meetings of the committee
- Committee to determine frequency of meetings – suggest every 8-12 weeks for now
- Meetings to be held at a convenient location – suggest local venue

Project Consultation – The Plan

- Epuron is striving to ensure that the project is developed and built in a manner which recognises the importance of an ongoing, long term relationship with the community
- The Liverpool Range Wind Farm Project Consultation Plan;
 - guides community and stakeholder engagement activity for the project during the development phase (up to project approval)
 - reflects the corporate requirements set out in Epuron's Community Consultation Framework and the DGR's issued for the project by the NSW DPI
 - is dynamic and periodically updated as required during consultation activity
 - reflects the specific needs of the project and the key community stakeholders
 - has taken into consideration the NSW Draft Wind Farm Planning Guidelines. While these draft guidelines are not yet in force, there are transitional provisions in place.
- The Project Consultation Plan is available at www.epuron.com.au/projects/liverpool

Project Consultation – Scope of the Plan

- Epuron's Consultation Framework identifies the following development phases for the project during its lifecycle:

- Phase 1 – Project Awareness
- Phase 2 – Project Investigations
- **Phase 3 – Project Development & Approvals**
- Phase 4 – Post Development Approval and Pre Construction
- Phase 5 – Construction & Commissioning
- Phase 6 – Operations & Decommissioning

- The Project Plan outlines those consultation activities proposed during the pre-approval development phases of the project which are phases 1 through 3.
- A further consultation plan will be developed as the project enters Phase 4 of its development.

Liverpool
Range
Wind
Farm
➔

Project Consultation – Objectives of the Plan are to.....

- minimise undue community concern in relation to the proposal, particularly during the early stages when little information on the project was known;
- ensure the community and other stakeholders are fully informed and aware of the proposal, it's likely impacts, and its likely benefits;
- ensure that Epuron fully understands the local context for the proposal, including any local impacts that the proposal may have or opportunities that it could provide;
- incorporate the suggestions and feedback into the design of the wind farm where possible;
- explain where and how this feedback can be and has been incorporated; and,
- provide opportunities for dialogue to allow the community to receive information and provide feedback about the proposal.
- investigate how best to maximise the local and regional benefit of the development. Specifically, Epuron is looking for feedback as to how a Community Fund might be established for the project, and what kind of community support is required in the vicinity of the project.

Consultation – Communication and Feedback

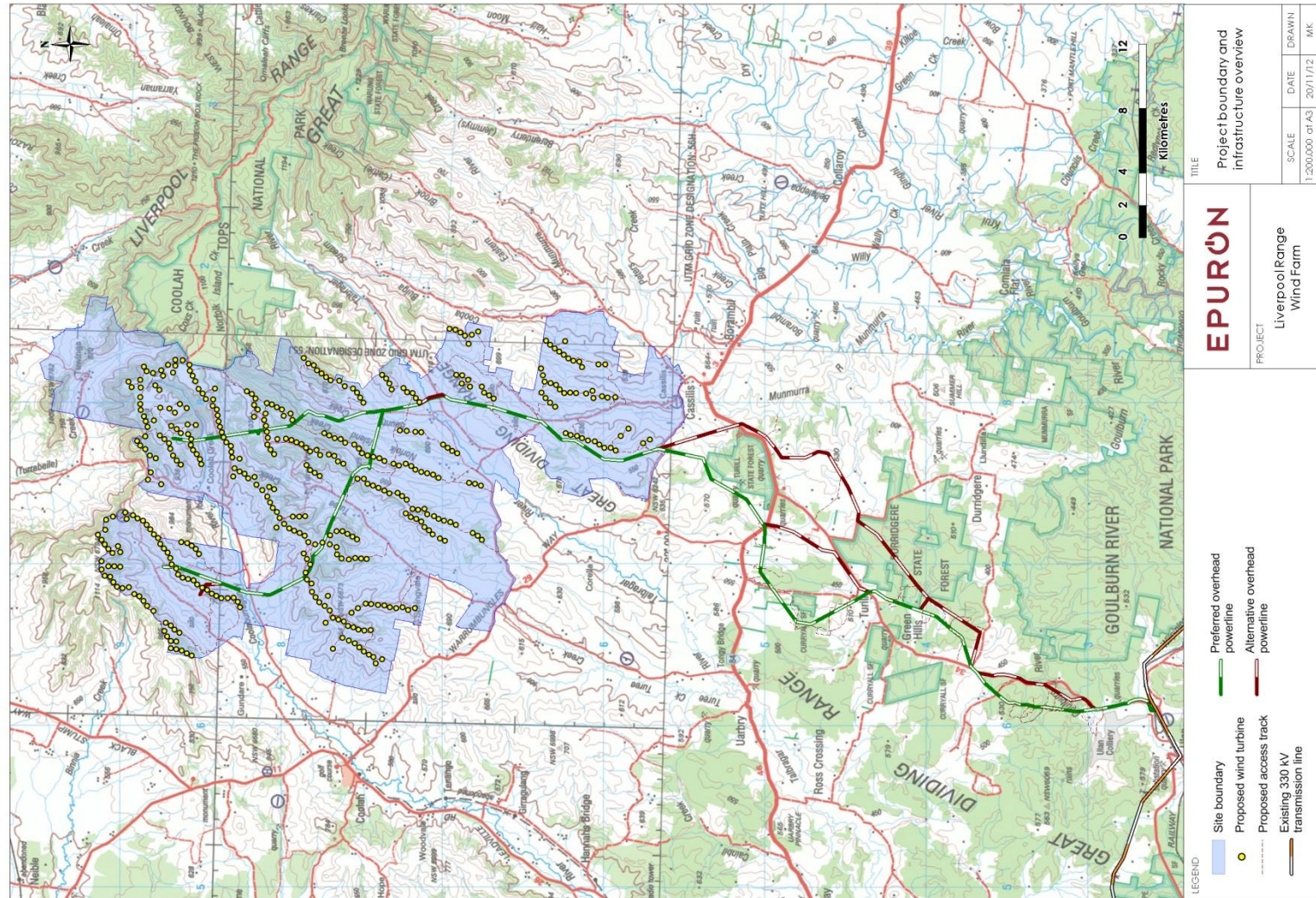
- Consultation is a two-way-street and we're always listening
- Feedback and suggestions are important to us
- Available communication channels include;
 - Epuron corporate website: www.epuron.com.au
 - Liverpool project website: www.liverpoolrangewindfarm.com.au
 - Mailing address: Liverpool Range Wind Farm
Level 11, 75 Miller Street
North Sydney...NSW...2060
 - Phone: 02 8456 7400
 - Fax: 02 9922 6645
 - Email: liverpoolrange@epuron.com.au
 - Senior Project Manager: Brian Hall
b.hall@epuron.com.au
 - Meetings Arranged by appointment

Project Information – Environmental Assessment

- Assessment of key issues;
 - Ecology (Environmental Flora and Fauna)
 - Noise (Operational and Construction)
 - Visual Amenity
 - Archaeology (Aboriginal and European Heritage)
- Other project assessments include;
 - Aviation
 - Communications
 - Electromagnetic Fields
 - Shadow Flicker
 - Bushfire Risks
 - Blade Throw
- General assessments include;
 - Water Supply, Soils and Landforms, Climate and Air Quality, Mineral Exploration, Economic, Resource Impacts, Traffic and Transport, Health and Property Values

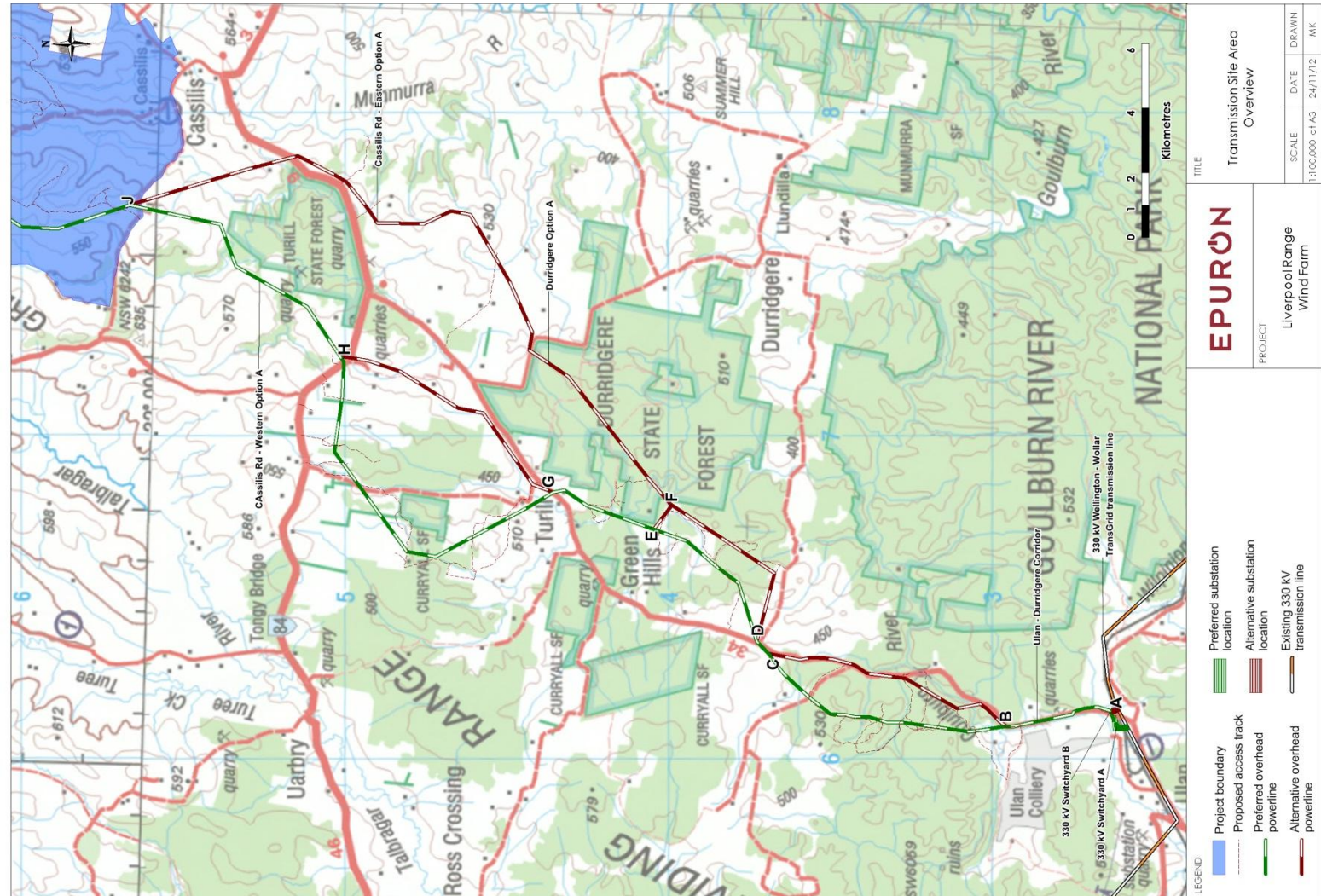
Project Information – Overview Map

- Wind farm stage 1 area up to 417 turbines
- Grid connection at Transgrid 330 kV transmission line at Ulan



Project Information – Transmission Line Routes

- New overhead powerline from wind farm to Ulan
- Up to 330 kV voltage
- Pole type structures
- Connection substation
- Preferred and alternate routes assessed



Project Information – Estimate of Likely Benefits to Region

- Project Investment Value \$1.8b-\$2.0b based on 1,251MW project (417x3MW)
- Direct regional investment from construction – \$375m
- Direct regional investment from operations - \$25m per annum for 25-30 years
- Direct jobs during construction – approx 1,200
- Direct jobs during operations – approx 75
- Regional/state/national flow on effects, jobs and expenditure multipliers – TBC
- Carbon emissions abatement - TBC
- Community Fund – TBC (considered as part of consultation process)

Other Reference Documents

- NSW Draft Wind Farm Planning Guidelines - December 2011
- NHMRC (National Health & Medical Research Council) Review of Wind Turbines & Health - July 2010
- NSW Valuer General - Impact of Wind Farms on Property Values – August 2009
- DECCW (NSW Department of Environment, Climate Change & Water - Community Survey: “Community Attitudes to Wind Farms” – December 2010
- Clean Energy Council - Wind Farm Investment, Employment and Carbon Abatement in Australia (SKM) – June 2012
- EPA South Australia – January 2013 Wind Farms and Infrasound

Next Steps and Timing

- Respond to DPI Adequacy Review March 2013
- Newsletter No 9 Prior to Easter
- CCC Meeting No 2 TBC.....May 2013
- EA Exhibition by DPI TBC.....April / May 2013

Thank You



EPURON Pty Ltd

75 Miller Street
North Sydney
NSW 2060
AUSTRALIA

T +612 8456 7400
F +612 9922 6645

www.epuron.com.au