

Wooroora Station

WIND FARM



- 42 wind turbines and associated infrastructure within Wooroora Station, a privately owned cattle grazing property with existing access tracks, high voltage transmission lines and a substation.
- Initial construction footprint of 509.7 hectares, and operational footprint after rehabilitation of ~57.6 hectares.
- Minimum 1 km buffer to the Wet Tropics of Queensland World Heritage Area (WTQWHA) and complete avoidance of rainforest, intact wet sclerophyll forest contiguous with the WTQWHA, and all known habitat for the magnificent brood frog.
- An Indigenous Land Use Agreement with the Traditional Owners with a suite of significant financial, employment and training benefits.
- A Community Benefit Program with funding of \$500,000 per year for the life of the wind farm (~25 years) to support local initiatives.
- Capital investment of \$700 million that would generate approximately \$200 million in regional direct and indirect expenditure.
- A generation capacity of 294 megawatts of clean energy to help decarbonise the electricity system and put downward pressure on electricity prices.

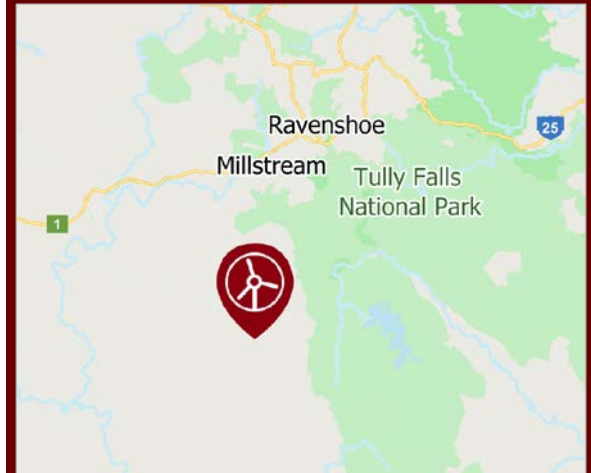
Nature positive plan

Commitments to achieve nature positive outcomes include:

- Nil construction involving soil disturbance during the wet season months.
- Rehabilitation of at least 70% of the temporary construction disturbance.
- Establishment of nature reserves for the magnificent brood frog and \$250,000 for scientific research.
- Salvage and relocation of denning hollows, plus nest boxes and net bridges.
- First Nations-led Integrated Pest and Bushfire Management Plans to reduce and control widespread invasive weeds (Candy leaf, Lantana camara, Siam weed) and pests (pigs, dogs, cats), and improve the host property's habitat values for key species.
- Significant, strategically located offset areas that will protect all known magnificent brood frog habit and the largest intact patches of wet sclerophyll forest contiguous with the WTQWHA, and improve connectivity between Koombuloo National Park and Yourka Reserve Nature Refuge.

Species	Impacted habitat (ha)	Offset areas	Ratio
Magnificent brood frog	52.2 (potential)	1,255.8	1:24
Northern greater glider	447.9 (known / potential)	4,409.2	1:10
Spectacled flying-fox (not found on site)	481.4 (potential)	4,486	1:9
Masked owl (not found on site)	504.4 (potential)	4,511	1:9
Koala (not found on site)	398.5 (potential)	3,056	1:7

Location



The project area is about 15 km south of Ravenshoe in the Atherton Tablelands, North Queensland.



Video

Hear from the project area's Traditional Owners about the opportunities Wooroora Station Wind Farm offers local First Nations people.



Scan QR code to access video

Planning & Assessment

Woorora Station Wind Farm - 42 wind turbines

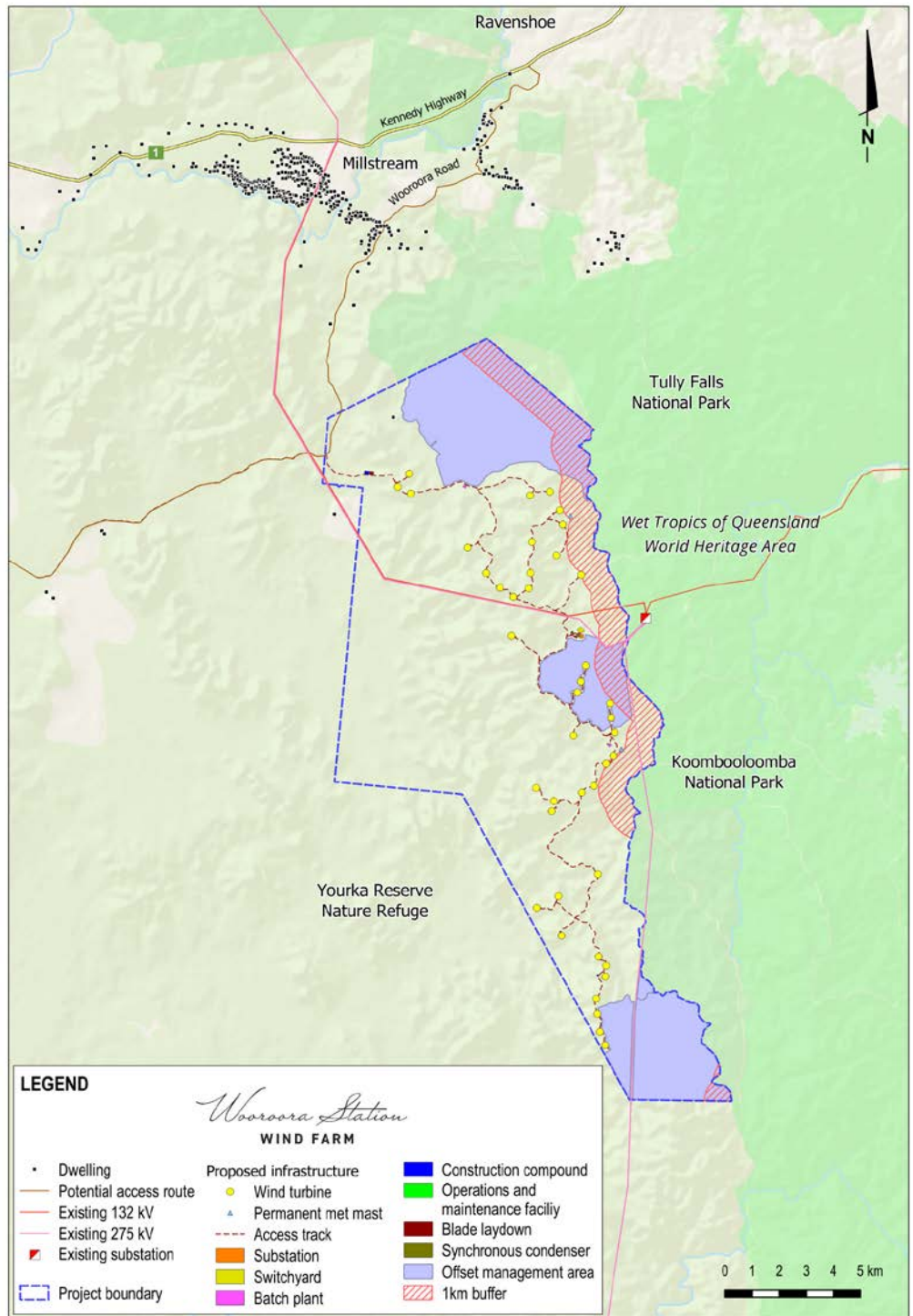
Queensland Government

- 1 Site selection, initial concept and preliminary investigations ✓
- 2 Pre-lodgment meeting with State Assessment and Referral Agency (SARA) ✓
- 3 Studies and assessments (prescribed by SARA State code 23) ✓
- 4 Application and assessments lodged with SARA ✓
- 5 Requests from SARA for further information and responses ✓
- 6 Assessment ✓
- 7 **Determination: approved** **WE ARE HERE**



Commonwealth Government

- 1 Referral to the Department of Climate Change, Energy, the Environment and Water (DCCEEW) for review under the Commonwealth *Environment Protection and Biodiversity Conservation Act 1999*. ✓
- 2 Decision: Controlled Action, assessment by Public Environment Report (PER) ✓
- 3 DCCEEW guidelines issued for draft PER ✓
- 4 Preparation of draft PER ✓
- 5 Draft PER lodged for review ✓
- 6 Draft PER placed on public exhibition ✓
- 7 Preparation of final PER taking into consideration comments in submissions ✓
- 8 **Final PER submitted to DCCEEW** **WE ARE HERE**
- 9 Determination



The project area is within Woorora Station, a large cattle grazing property about 15 km south of Ravenshoe. The site layout includes a minimum 1 km buffer to the Wet Tropics of Queensland World Heritage Area (WTQWHA) and significant, strategically located environmental offset areas. These will provide thousands of hectares of protected habitat for key species, and improve habitat connectivity between the WTQWHA, contiguous wet sclerophyll forest on the host property and Yourka Reserve Nature Refuge. The wind farm would connect to the existing 275 kV powerline on the site and have a generation capacity of 294 megawatts of clean energy.

More information

Woorora Station Wind Farm Information Hub, 55 Grigg St, Ravenshoe. Open Thursday mornings and by appointment.

Telephone: 1800 731 296.

Email: info@woororastationwindfarm.com.au.

Newsletter sign-up: arkenergy.com.au/mailling-list-details

Website: woororastationwindfarm.com.au or scan QR code right



Scan QR CODE to visit the website