

Boomer Green Energy Hub



A photomontage showing what the wind farm would look like from Apis Creek Road, Mount Gardiner, from about 9.6 km away.

Project information centre

Ark Energy has opened the Boomer Green Energy Hub Office and Information Centre in Rockhampton.

The centre provides convenient and easy access to up-to-date project information and maps, and the opportunity to discuss the project in more detail with a member of the project team.

The centre is located at 1/24 William St in the Rockhampton CBD and open during business hours most weekdays or by appointment via the contact details overleaf.



Studies and surveys underway

The project is in early development, and progressing through the planning, design and assessment phase. Work underway includes ongoing wind monitoring, cultural heritage work with the Traditional Owners, the Barada Kabalbara Yetimarala People, and surveys and studies for the various environmental and technical assessments required. As more information about the site becomes available, the design is refined and modified accordingly.

The Australian Department of Climate Change, Energy, the Environment and Water (DCCEEW) has also determined that the proposal will require assessment and approval under the *Environment Protection and Biodiversity Conservation Act 1999* (EPBC Act) through an environmental impact statement (EIS). Guidelines for the EIS are available from the project's page in the EPBC Public Portal: epbcpportal.awe.gov.au. (EBPC number 2022/09396).

It is anticipated that the development application and EIS will be finalised and lodged with the relevant authority before mid-year.

Community information sessions – 28 and 29 February

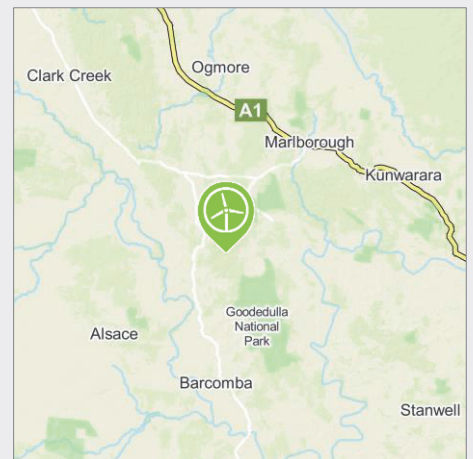
Residents and community members are invited to join the Boomer Green Energy Hub project team at the next round of local community information sessions in Duaringa and Marlborough. Information at each session will be the same, and for those who are unable to attend, the information shared will be available online from the project website.

Duaringa: 4-6pm, Wednesday 28 February 2024
Duaringa Golf Club, Capricorn Highway, Duaringa

Marlborough: 4-6pm, Thursday 29 February 2024
Marlborough Community Hall, Milman Street, Marlborough

Refreshments will be provided. To assist with catering please RSVP to info@boomerhub.com.au by Monday 26 February. Everyone is welcome. The project team looks forward to meeting attendees and the opportunity to discuss the project in more detail and answer questions.

Location



The project area for the Boomer Green Energy Hub is about 100 km north-west of Rockhampton and 30 km south-west of Marlborough in central Queensland.

It is within the candidate Central Queensland Renewable Energy Zone, an area identified as optimal for new renewable energy generation.

- Investment of ~\$3 billion
- Estimated to generate ~\$500 million in local and regional expenditure
- Estimated to create 350+ jobs during construction and ~20 full-time jobs for operation
- A community benefit program from the start of construction and for the life of the wind farm
- Target start of construction: Q1 2026
- Target completion: Q3 2029
- Capacity of ~1,000 MW

Planning & assessment

Queensland Government (wind) Local councils (solar - tbc)

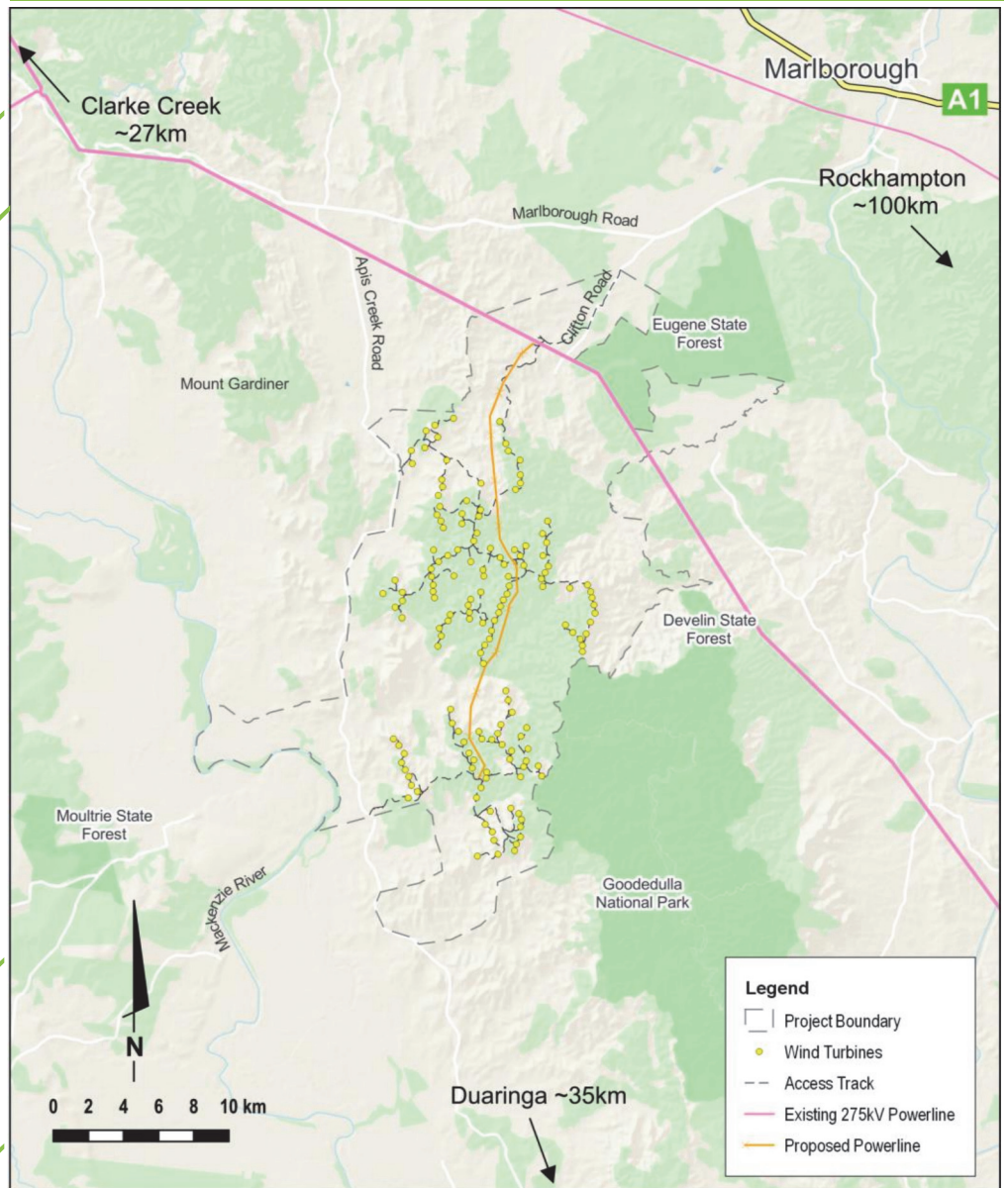
- 1 Site selection, initial concept and preliminary investigations ✓
- 2 Pre-lodgment meeting ✓
- 3 Studies and technical assessments **WE ARE HERE**
- 4 Development application and assessments lodged **Est Q2 2024**
- 5 Requests for further information (if required) and response
- 6 Assessment
- 7 Determination



Australian Government

- 1 Referral to the Department of Climate Change, Energy, the Environment and Water (DCCEEW) for review under the *Environment Protection and Biodiversity Conservation Act 1999* (EPBC Act) ✓
- 2 Decision and advice on assessment pathway: *Determined a controlled action with assessment by Environmental Impact Statement (EIS).* EBPC no 2022/09396. ✓
- 3 Assessment work for the EIS **WE ARE HERE**
- 4 Draft EIS submitted for adequacy review **Est Q2 2024**
- 5 Requests from DCCEEW for further information (if required) and responses
- 6 EIS accepted by DCCEEW and placed on public exhibition
- 7 Response to submissions (if required) and lodgment of updated EIS
- 8 Final EIS submitted
- 9 Determination

Boomer Green Energy Hub indicative wind turbine layout



The project area is about 100 km north-west of Rockhampton and 30 km south-west of Marlborough. Based on wind data and findings from preliminary site investigations the initial design involves ~150 wind turbines. Feasibility studies to add solar are also underway to optimise planned new electrical infrastructure. The hub would connect to the existing 275 kV transmission line.

Questions and feedback

Ark Energy appreciates the importance of involving community members and local stakeholders in its projects. We are focused on providing opportunities for interested community members and stakeholders to participate, and maximising opportunities for the local and regional communities to benefit in meaningful ways.

Questions and feedback are welcome at any time and can be sent directly to the project team. We also encourage you to stay up to date on project developments and opportunities to participate by registering for project newsletters - please see details below.

More information

Visit – Boomer Green Energy Hub Office & Information Centre, 1/24 William Street, Rockhampton CBD.

Tel - 1800 731 296

Email - info@boomerhub.com.au

Newsletters – register at arkenergy.com.au/mailling-list-details

Website - boomerhub.com.au or scan QR code right



Scan QR code to visit the project website