

Doughboy Wind Farm



Photograph taken on Dyamberin Rd, looking south towards the Doughboy Wind Farm project area, approximately 4 km away.

Project update

The project is in early development and progressing through the planning and assessment phase. Preliminary assessment work has been undertaken for visual impact, noise and biodiversity to inform the Scoping Report that was lodged with the NSW Department of Planning and Environment (now called the Department of Planning, Housing and Infrastructure, DPPI).

Based on the Scoping Report DPPI issued Planning Secretary's Environmental Assessment Requirements (SEARs) outlining requirements for the Environmental Impact Statement (EIS). Key matters for assessment include landscape and visual impact, noise and vibration, biodiversity, heritage, transport, water and soils, air quality, hazards and risks, waste, and social and economic impacts.

The Australian Department of Climate Change, Energy, the Environment and Water (DCCEEW) has also determined that the proposal will require assessment and approval under the *Environment Protection and Biodiversity Conservation Act 1999* (EPBC Act) before it can proceed. This assessment will be done by the DPPI under the bilateral agreement between the NSW and Commonwealth Governments.

It is anticipated that the surveys and studies for the various environment and technical assessments required will commence before mid-year. As more information about the site becomes available, the design will be refined and modified accordingly.

Local information session, Thursday, 7 March 2024

Residents and community members are invited to join the Doughboy Wind Farm project team at a local community information session in Wongwibinda.

The session will follow a drop-in format and include a brief update presentation. There will be plenty of opportunity to ask questions and discuss the proposal in more detail with members of the project team. For those who are unable to attend in person, the information shared will be available online from the website.

Time: 4-6pm, Thursday 7 March 2024. Drop-in format, with an update presentation at approximately 5pm.

Location: Wongwibinda Hall, 2390 Guyra Road, Wongwibinda NSW 2350

Refreshments will be provided. To assist with catering please RSVP to info@doughboywindfarm.com.au by Monday 4 March 2024.

Everyone is welcome. The project team looks forward to meeting attendees and the opportunity to discuss the project in more detail and answer questions.

Location



The project area for the proposed Doughboy Wind Farm is approximately 50 km east of Armidale, in the New England region of New South Wales.

It is within the NSW Government's New England Renewable Energy Zone, an area identified as optimal for new renewable energy projects due to the natural resources and proximity to existing or planned network infrastructure.

The proposal involves up to 55 wind turbines and associated infrastructure, with a generation capacity of approximately 350 megawatts (MW).

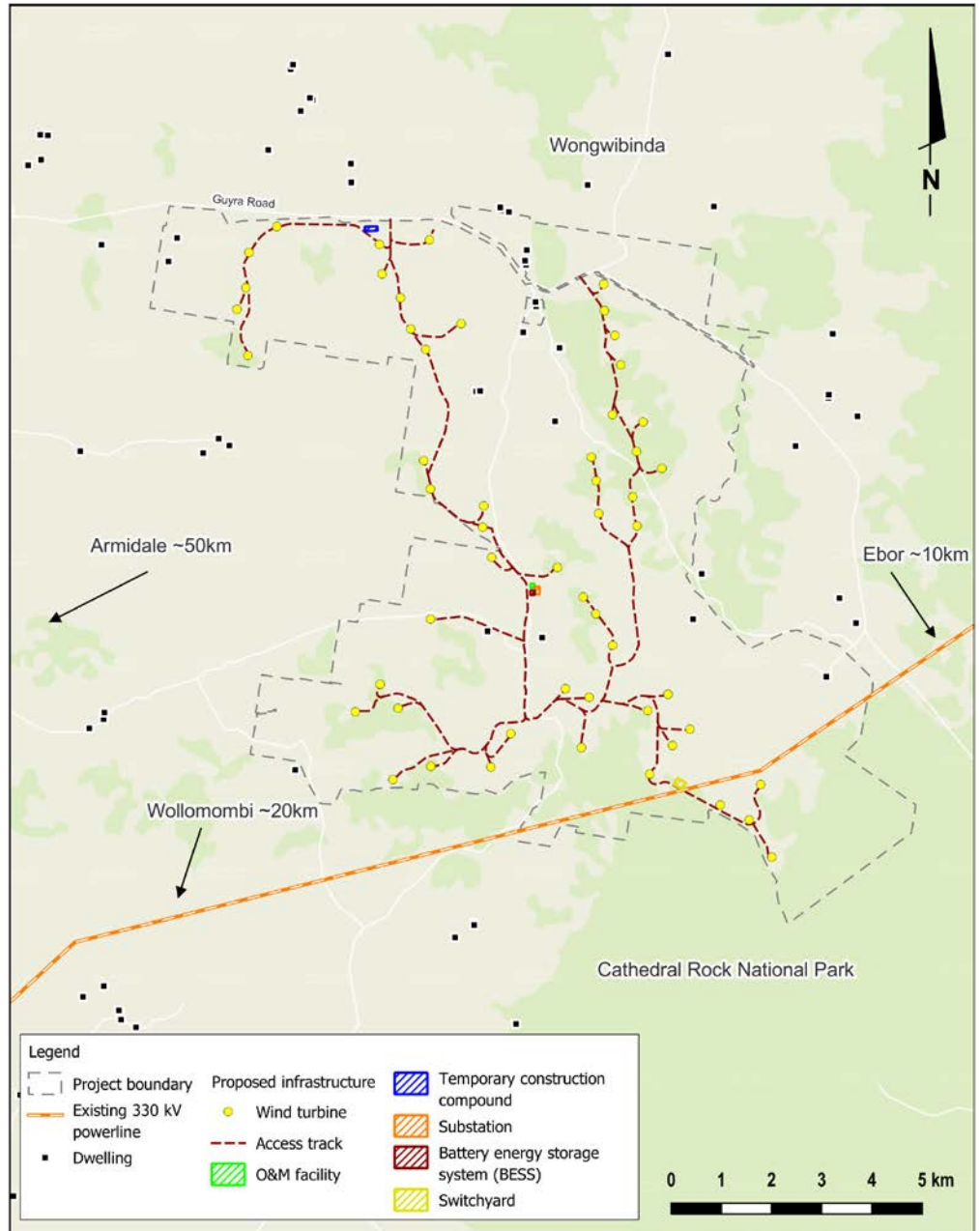
The wind farm would connect to the existing 330 kV transmission line that crosses the project area.

Planning & assessment

Utility-scale wind farms in NSW are considered State Significant Development and assessed by the NSW Department of Planning, Housing and Infrastructure (DPHI).

- 1 Site selection and preliminary investigations ✓
- 2 Initial concept and consultation ✓
- 3 Referral to the Australian Department of Climate Change, Energy, the Environment and Water (DCCEEW) for review under the Commonwealth *Environment Protection and Biodiversity Conservation Act 1999* (EPBC Act) ✓
- 4 Determination on EPBC Act referral by DCCEEW - controlled action with assessment under bilateral agreement (Ref 2021/8905) ✓
- 5 Preparation of updated Scoping Report for the NSW Department of Planning and Environment (DPE) ✓
- 6 Planning Secretary's Environmental Assessment Requirements (SEARs) for the Environmental Impact Statement (EIS) issued by DPE ✓
- 7 Studies, assessments, design WE ARE HERE**
- 8 Design completed, finalising EIS for lodgment
- 9 Development application (DA) and EIS lodged with DPHI (formerly DPE)
- 10 DA and EIS on public exhibition
- 11 Responses to submissions and requests for further information (if required)
- 12 Assessment by DPHI
- 13 DPHI assessment report and recommendation
- 14 Determination by DCCEEW

Doughboy Wind Farm – indicative site layout



The project area is south of Wongwibinda, north-east of Wollomombi, west of Ebor and approximately 50 km east of Armidale. The current design involves a layout of 54 wind turbines and associated infrastructure, with a generation capacity of approximately 350 MW.

Questions and feedback welcome

Ark Energy appreciates the importance of involving local stakeholders, and input from interested community members and other local stakeholders is welcome and valued.

Comments and feedback can be sent directly to the project team via the feedback form on the project website or the contact details below. Where practicable local input will be factored into the project's design to improve outcomes and community benefits.

More information

Tel - 1800 731 296

Email - info@doughboywindfarm.com.au

Newsletters – register at arkenergy.com.au/mailling-list-details for email news, or to receive newsletters by post, send us your postal address and a request to be added to the mail (post) list.

Website - doughboywindfarm.com.au or scan the QR code right



Scan QR code to visit the project website