

Richmond Valley Solar Farm



A photograph of the project area

Project update

The project team has been progressing the various studies and technical assessments required for Richmond Valley Solar Farm's Environmental Impact Statement (EIS). As more information about the project area has become available, the design has been refined and modified. In consultation with specialist consultants for biodiversity, flooding, visual impact and bushfire prevention, the development footprint is currently approximately 804 hectares (ha) and avoids all environmentally sensitive areas. Please see map overleaf for current layout.

Commonwealth assessment

In October 2023 the proposal was referred to the Australian Department of Climate Change, Energy, the Environment and Water (DCCEEW) for review under the Commonwealth *Environment Protection and Biodiversity Conservation Act 1999* (EPBC Act). DCCEEW determined the proposal to be a controlled action, which means it will also require assessment and approval under the EPBC Act.

DCCEEW's environmental assessment requirements have been incorporated into requirements for the EIS, and the NSW Department of Planning, Housing and Infrastructure (DPHI - formerly the NSW Department of Planning and Environment) will assess these under the bilateral agreement between the NSW and Commonwealth Governments.

The project's EPBC documentation including DCCEEW's assessment decision is available from the Richmond Valley Solar Farm project page in the EPBC Act Public Portal (ref 2023/09641): epbcpportal.awe.gov.au.

Local information session

Residents and community members are invited to join the project team at a public information session in Ellangowan next month. This session will follow a drop-in format. Information on key topics of interest raised by community members will be available, and selected technical specialist consultants will be in attendance to answer questions.

Time: 4-6pm, Wednesday 7 February 2024

Location: Ellangowan Community Hall, 1630 Ellangowan Road, Ellangowan.

Everyone is welcome. We look forward to meeting attendees and the opportunity to answer questions and discuss the project in more detail. For those who are unable to attend in person, the information shared will be available online from the website.

Location



The site for the proposed Richmond Valley Solar Farm is near Myrtle Creek, about 25 km south of Casino in the Northern Rivers region of New South Wales.

The location is well suited for a solar farm. It has an excellent solar resource, involves already disturbed land and the terrain is relatively flat. The site is also close to the existing transmission network, with the Coffs Harbour to Lismore 330 kV powerline running through the north-west corner.

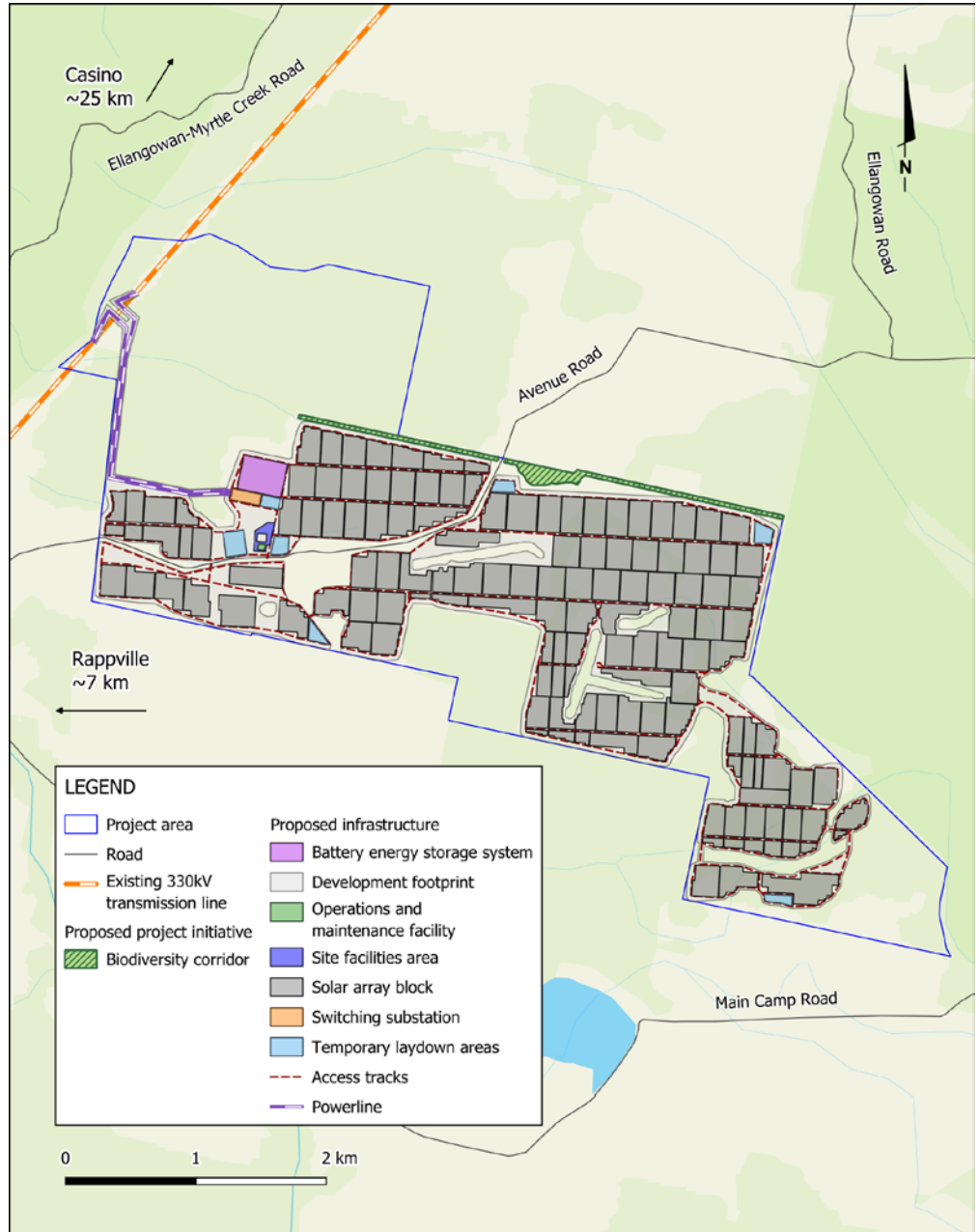
It is estimated that the solar farm would have a generation capacity of up to 500 megawatts, and the co-located battery energy storage system would be capable of providing a power capacity of up to 275 MW and energy storage of up to 2,200 MWh over eight hours.

Planning & assessment

Utility-scale solar farms in NSW are considered State Significant Development and assessed by the NSW Department of Planning, Housing and Infrastructure (DPHI).

- 1 Site selection and preliminary investigations ✓
- 2 Initial concept and consultation ✓
- 3 Scoping Report submitted to the former NSW Department of Planning and Environment (DPE) ✓
- 4 Secretary's Environmental Assessment Requirements (SEARs) for the Environmental Impact Statement (EIS) issued by DPE ✓
- 5 Referral to the Australian Department of Climate Change, Energy, the Environment and Water (DCCEEW) for review under the Commonwealth *Environment Protection and Biodiversity Conservation Act 1999* (EPBC Act). ✓
- 6 Determination by DCCEEW – controlled action (ref 2023/09641) ✓
- 7 **Studies, assessments, design** WE ARE HERE
- 8 Design completed, finalising EIS for lodgment
- 9 Development application (DA) and EIS lodged with DPHI (formerly DPE)
- 10 DA and EIS on exhibition for public comment
- 11 Responses to submissions and requests for additional information (if required)
- 12 Assessment by DPHI
- 13 DPHI assessment report and recommendation
- 14 Determination by DCCEEW

Richmond Valley Solar Farm proposed site layout



The map above shows the preliminary design for the Richmond Valley Solar Farm including solar panels, a powerline connection corridor, laydown areas and battery storage system,

Community benefits

The Richmond Valley Solar Farm presents the opportunity for significant benefits for the local area including job opportunities, work for contractors, increased patronage for local businesses, and a community benefit program.

The community benefit program will be designed in consultation with the community and to provide meaningful and lasting local benefits. We invite community members to share their views on priorities and suggestions for the program. Please send your ideas directly to the project team via email or the feedback form on the website.

More information

Tel - 1800 731 296

Email - info@richmondvalleysolar.com.au

Email newsletters - arkenergy.com.au/mailling-list-details

Website - richmondvalleysolar.com.au or scan the QR code

