

Doughboy Wind Farm



Photograph taken on Dyamberin Rd, looking south towards the Doughboy Wind Farm project area, approximately 4 km away.

Assessment requirements issued

In November the NSW Department of Planning and Environment (DPE) issued Planning Secretary's Environmental Assessment Requirements (SEARs) for Doughboy Wind Farm's development application.

Issued for all utility-scale wind farm development applications in NSW, which are considered State significant development, the SEARs outline the general and technical assessment requirements for the project's Environmental Impact Statement (EIS).

The SEARs are based on the revised Doughboy Wind Farm Scoping Report that was lodged with the DPE in October, for a renewable energy project consisting of up to 55 wind turbines with a maximum height of 250 m, with a generating capacity of approximately 340 megawatts (MW) and 100 MW / 400 MWh battery energy storage system (BESS). The project would connect to the existing 330 kV transmission line that traverses the southern end of the site. See map overleaf for proposed layout.

Key matters for assessment identified by the SEARs are landscape and visual impact, noise and vibration, biodiversity, heritage, transport, water and soils, air quality, hazards and risks, waste, and social and economic impacts.

The Australian Department of Climate Change, Energy the Environment and Water has also determined that the project is a controlled action under the Commonwealth *Environment Protection and Biodiversity Conservation Act 1999* (EPBC Act) and will require assessment and approval under the EPBC Act before it can proceed. This will be done by the DPE under the bilateral agreement between the NSW and Commonwealth Governments.

The project's planning documentation, including the Scoping Report and SEARs, are available online from the Doughboy Wind Farm page in the NSW Government's Major Projects Planning Portal, visit planningportal.nsw.gov.au/major-projects or scan the QR code right on a mobile device.

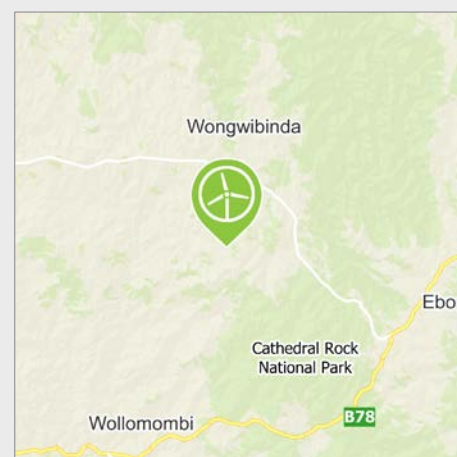


Scan above QR code to access Doughboy Wind Farm's page in the NSW Major Projects Portal.

Public information session in Q1, 2024

While surveys and work for the EIS reports are underway, local community members and other key stakeholders will be consulted through meetings and information sessions. Details for the next local information session, which will be held in Q1, will be confirmed in the next newsletter.

Location



The project area for the proposed Doughboy Wind Farm is approximately 50 km east of Armidale, in the New England region of New South Wales.

It is within the NSW Government's New England Renewable Energy Zone, an area identified as optimal for new renewable energy projects due to the natural resources and proximity to existing or planned network infrastructure.

The proposal involves up to 55 wind turbines and associated infrastructure, with a generation capacity of approximately 350 megawatts (MW). The wind farm would connect to the existing 330 kV transmission line that crosses the project area.

Planning & assessment

Utility-scale wind farms in NSW are considered State Significant Development and assessed by the NSW Department of Planning and Environment.

1 Site selection and preliminary investigations ✓

2 Initial concept and consultation ✓

3 Referral to the Australian Department of Climate Change, Energy, the Environment and Water (DCCEEW) for review under the Commonwealth *Environment Protection and Biodiversity Conservation Act 1999* (EPBC Act) ✓

4 Determination on EPBC Act referral by DCCEEW - controlled action with assessment under bilateral agreement (Ref 2021/8905) ✓

5 Preparation of updated Scoping Report for the NSW Department of Planning and Environment (DPE) ✓

6 Planning Secretary's Environmental Assessment Requirements (SEARs) for the Environmental Impact Statement (EIS) issued by DPE **WE ARE HERE**

7 Studies and assessments, finalising project design

8 Finalising EIS for lodgment

9 Development application (DA) and EIS lodged with DPE

10 DA and EIS on public exhibition

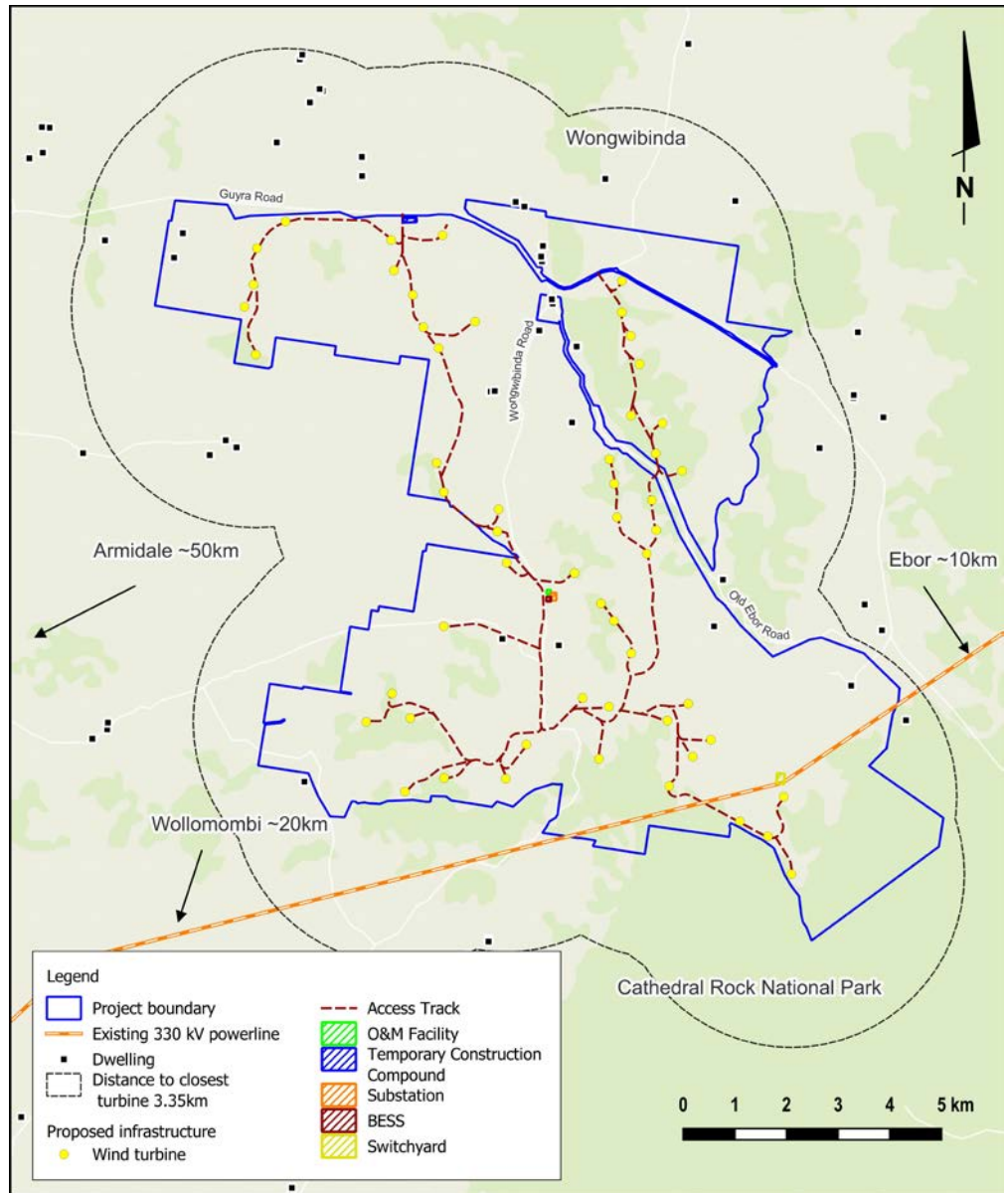
11 Responses to submissions and requests for further information (if required)

12 Assessment by DPE

13 DPE assessment report and recommendation

14 Determination by DCCEEW

Doughboy Wind Farm – indicative site layout



The project area is south of Wongwibinda, north-east of Wollomombi, west of Ebor and approximately 50 km east of Armidale. The current design involves a layout of 55 wind turbines with a generation capacity of approximately 340 MW.

Questions and feedback welcome

Input from interested community members and other local stakeholders is welcome and valued. Feedback can be sent directly to the project team via the details below.

Thank you

Thank you to all those who have engaged with us on this project to date. We wish everyone a safe and enjoyable festive season and look forward to updating you again in early 2024.

More information

Tel - 1800 731 296

Email - info@doughboywindfarm.com.au

Newsletters – register at arkenergy.com.au/mailling-list-details for email news, or to receive newsletters by post, email your postal address and a request to be added to the mail (post) list.

Website - doughboywindfarm.com.au or scan the QR code right



Scan QR code to visit the project website