

Burrendong Wind Farm



Photomontage of what the wind farm would look like from Wallawaugh Rd, Hargraves, approximately 2 km away.

Environmental Impact Statement on exhibition

The Environmental Impact Statement (EIS) for the Burrendong Wind Farm's development application has been lodged with the NSW Department of Planning and Environment and is on public exhibition until **Wednesday 13 December 2023**.

The EIS and associated reports are available online from the Burrendong Wind Farm page in the NSW Government's Major Projects Portal at: planningportal.nsw.gov.au/major-projects/projects/burrendong-wind-farm (or scan QR code below).

The EIS responds to the Planning Secretary's Environmental Assessment Requirements (SEARs) and addresses all key environmental, social and economic impacts associated with the project. Specialist technical reports in the EIS include:

- Landscape and Visual Impact Assessment (LVIA)
- Noise and Vibration Impact Assessment (NVIA)
- Biodiversity Development Assessment Report (BDAR)
- Aboriginal Cultural Heritage Assessment (ACHR)
- Agricultural Impact Assessment
- Air Quality Assessment
- Traffic and Transport Impact Assessment
- Aviation Impact Assessment
- Telecommunications Impact Assessment
- Bushfire Risk Assessment
- Social Impact Assessment (SIA)
- Economic Impact Assessment (EIA)
- Surface Water Impact Assessment and Groundwater Impact Assessment



Scan above QR code to access Burrendong Wind Farm's page in the NSW Major Projects Portal.

During the exhibition period any person can make a submission. Guidance on how to make a submission is also available on the portal and the deadline for submissions is 5pm, Wednesday 13 December 2023.

Community information session – Friday, 8 December

A drop-in style information session will be held in Mudgee during the EIS exhibition period to provide interested community members with an opportunity to discuss the proposal with the project team. Copies of the EIS' Executive Summary will also be available.

Time: Open from 3pm to 6pm, Friday 8 December 2023.

Location: Parklands Resort & Conference Centre, 121 Ulan Road, Mudgee.

Everyone is welcome. Refreshments will be provided. To assist with catering please RSVP by Monday 4 December to info@burrendongwindfarm.com.au.

Location



The project area for the proposed Burrendong Wind Farm is east of Lake Burrendong, within Dubbo Regional Council and Mid-Western Regional Council areas, in the central west region of New South Wales.

The site has an excellent wind resource and is within the Central West-Orana Renewable Energy Zone, an area identified as optimal for new renewable energy projects due to the natural resources and proximity to existing or planned network infrastructure.

New renewable energy projects are required to help the NSW Government meet its targets to halve emissions by 2030 and achieve net zero by 2050.

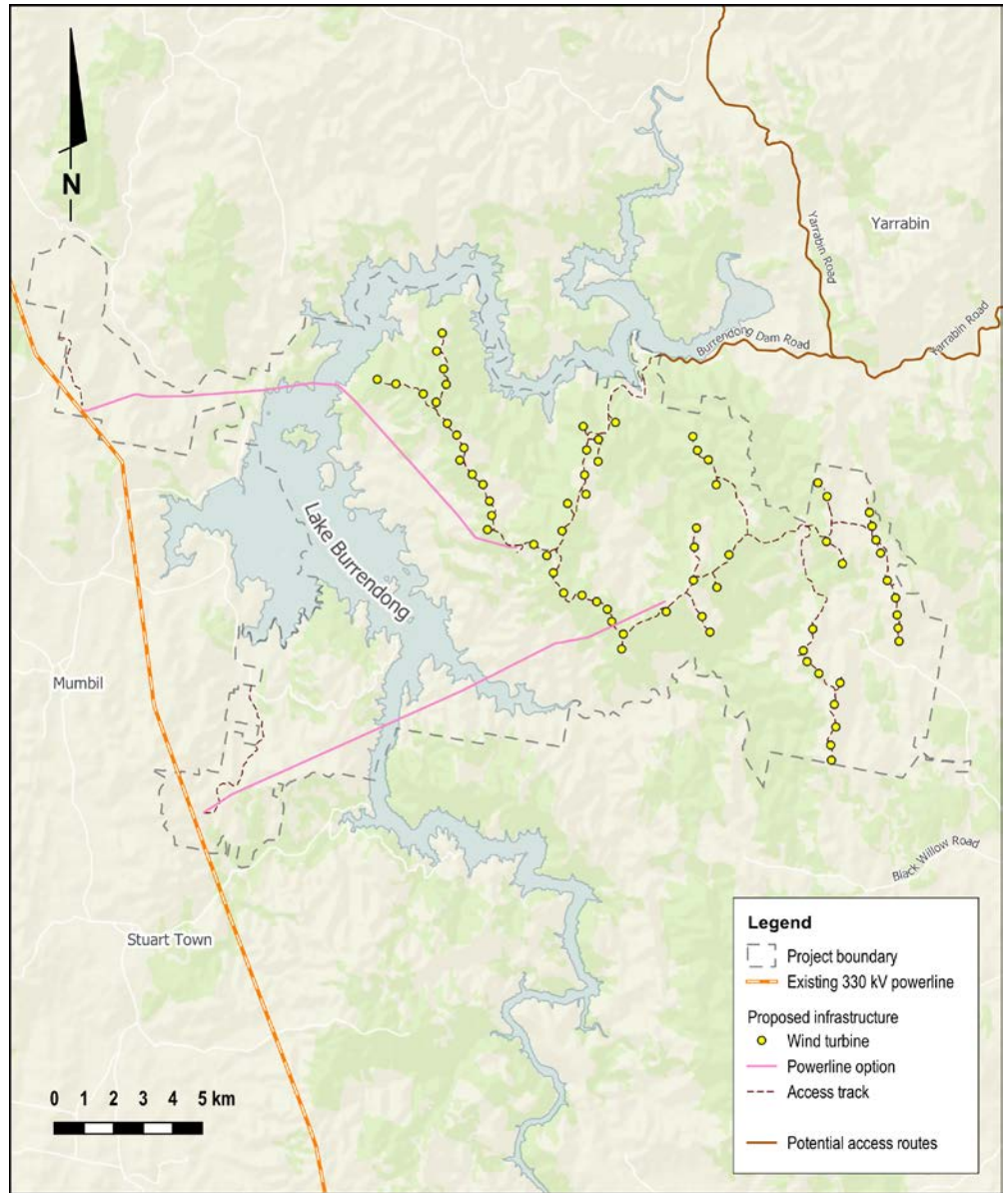
The Burrendong Wind Farm proposal involves up to 70 wind turbines and associated infrastructure. The wind farm would have a generation capacity of 400-500 megawatts.

Planning & assessment

Utility-scale wind farms in NSW are considered State Significant Development and assessed by the NSW Department of Planning and Environment.

- 1
Site selection and preliminary investigations
✓
- 2
Initial concept and consultation
✓
- 3
Referral (updated) to the Australian Department of Climate Change, Energy, the Environment and Water (DCCEEW) for review under the Commonwealth *Environment Protection and Biodiversity Conservation Act 1999* (EPBC Act).
✓
- 4
Scoping Report (updated) submitted to the NSW Department of Planning and Environment (DPE)
✓
- 5
Determination on EPBC Act referral by DCCEEW - controlled action with assessment under bilateral agreement (Ref 2022/09268)
✓
- 6
Secretary's Environmental Assessment Requirements (SEARs) for the Environmental Impact Statement (EIS) issued by DPE
✓
- 7
Studies, assessments, design
✓
- 8
Finalising EIS for lodgment
✓
- 9
Development application (DA) and EIS lodged with DPE
✓
- 10
DA and EIS on public exhibition and open for submissions
WE ARE HERE
- 11
Responses to submissions and requests for further information (if required)
- 12
Assessment by DPE
- 13
DPE assessment report and recommendation
- 14
Determination by DCCEEW

Burrendong Wind Farm site map – 70 wind turbines



The proposal involves a layout of 70 wind turbines with a generation capacity of 400-500 MW.

Community benefits

Wind farms generate significant economic benefits for local and regional communities including jobs and contract work, increased patronage for businesses and retail, and a community benefit fund.

Suggestions on priorities that could be supported by the community benefit fund are welcome and can be sent to the project team via email.

The Burrendong Wind Farm looks forward to opportunity to work with the local community to deliver meaningful and lasting local benefits from the project.

Thank you

Thank you to everyone who has engaged with us for this proposal to date. Questions and feedback are welcome at any time via info@burrendongwindfarm.com.au

More information

Tel - 1800 731 296

Email - info@burrendongwindfarm.com.au

Register for newsletters - arkenergy.com.au/mailling-list-details

Website - burrendongwindfarm.com.au or scan QR code right.

