

Bowmans Creek Wind Farm



Photomontage showing what the Bowmans Creek Wind Farm would look like from Sandy Creek Rd, McCullys Gap.

Project referred to IPC

After receiving more than 50 unique submissions objecting to the Bowmans Creek Wind Farm application during the public exhibition of its environmental impact statement (EIS), the NSW Department of Planning and Environment (DPE) has referred it to the NSW Independent Planning Commission (IPC) for determination.

The IPC is separate to the DPE and makes independent and objective decisions on state significant development applications in certain circumstances. It is now the determining authority for the Bowmans Creek Wind Farm development application.

After making its own assessment, DPE has recommended that the IPC grant development consent, subject to the conditions specified in DPE's recommendation.

In assessing the merits of the project, DPE considered the environmental, social and economic impacts, submissions on the EIS, relevant environmental planning instruments, suitability of the site, and the public interest, in accordance with the requirements of the *Environmental Planning and Assessment Act 1979*.

During the assessment process DPE also visited the site, and consulted with local residents, involved Councils and relevant government agencies.

IPC consultation

As part of the IPC process interested community members have the opportunity to make a submission and attend a public meeting in Muswellbrook:

Time: 2pm, Thursday 7 December 2023 (and Friday 8 December if required)

Location: Atherstone Room, Upper Hunter Conservatorium of Music, Level 1/80 Bridge St, Muswellbrook, NSW 2333.

Anyone wishing to present at the public meeting must pre-register on the IPC website.

Further details including dates, the submission portal and public meeting speaker registration form are available from the Bowmans Creek Wind Farm page on the IPC website: www.ipcn.nsw.gov.au/cases/2023/11/bowmans-creek-wind-farm

Assessment documents

The project's documentation including the EIS reports, submissions on the EIS, Ark Energy's response to submissions, DPE's IPC referral letter, Assessment Report and recommendation for Development Consent are available from the Bowmans Creek Wind Farm page in the NSW Government's Major Planning Portal:

www.planningportal.nsw.gov.au/major-projects/projects/bowmans-creek-wind-farm

Location

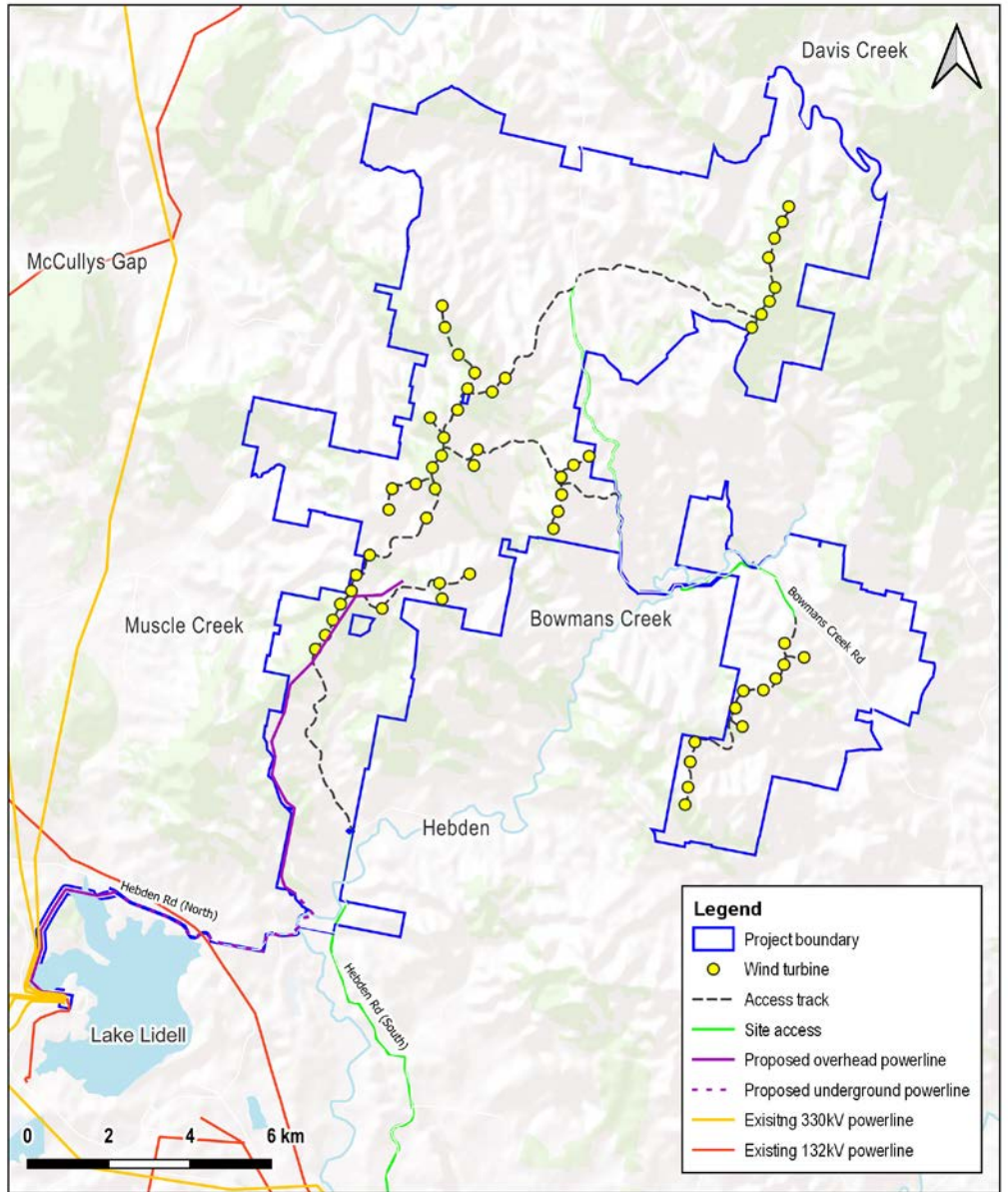


The Bowmans Creek Wind Farm would be approximately 10 km east of Muswellbrook, and located within the Hunter-Central Coast Renewable Energy Zone.

- 56 wind turbines.
- Capacity of ~347 megawatts.
- Expected to create more than 200 direct and indirect jobs in the regional area during construction, and 30 direct and indirect jobs during operation.
- Estimated to generate \$179 million in the regional economy, through direct and indirect expenditure, value-add and household income.
- Significant community benefit funds from start of generation and for the life of the wind farm.
- Neighbour benefit program.

Utility-scale wind farms in NSW are considered State Significant Development and assessed by the NSW Department of Planning and Environment.

- 1 Site selection and preliminary investigations ✓
- 2 Initial concept and consultation ✓
- 3 Referral to the Australian Department of Climate Change, Energy, the Environment and Water (DCCEEW) for review under the Commonwealth *Environment Protection and Biodiversity Conservation Act 1999* (EPBC Act). ✓
- 4 Scoping Report submitted to the NSW Department of Planning and Environment (DPE) ✓
- 5 Determination on EPBC Act referral by DCCEEW - controlled action with assessment under bilateral agreement (EPBC Number: 2020/8631) ✓
- 6 Secretary's Environmental Assessment Requirements (SEARs) for the Environmental Impact Statement (EIS) issued by DPE ✓
- 7 Studies, assessments, design ✓
- 8 Design completed, finalising EIS for lodgment ✓
- 9 Development application (DA) and EIS lodged with DPE ✓
- 10 DA and EIS on exhibition for public comment ✓
- 11 Response to submissions ✓
- 12 Responses to requests for further information (RFI) ✓
- 13 Assessment by DPE ✓
- 14 Referral to Independent Planning Commission (IPC) **WE ARE HERE**
- 15 Determination by the IPC and DCCEEW



The Bowmans Creek Wind Farm project area is approximately 10 km east of Muswellbrook, past Lake Liddell, and involves a number of properties near Muscle Creek, Bowmans Creek and Hebden.

Nearby localities are Bowmans Creek, Davis Creek, Goorangoola, Greenlands, Hebden, McCullys Gap, Muscle Creek and Rouchel Brook. The project has a capital investment value of \$569 million and is expected to benefit the local government areas of Singleton, Muswellbrook and Upper Hunter Shire.

The proposal involves 56 wind turbines with a maximum tip height of 220 metres and would connect to the nearby high voltage transmission infrastructure. The wind farm would have an output capacity of 347 megawatts to contribute to the state's renewable energy targets and put downward pressure on electricity prices.

More information

Tel - 1800 731 296

Email - info@bowmanscreekwindfarm.com.au

Register for newsletters - arkenergy.com.au/mailling-list-details

Website - bowmanscreekwindfarm.com.au or scan QR code right



Scan QR code to visit the website