

Wooroor Station

WIND FARM



- 42 wind turbines and associated infrastructure within Wooroor Station, a privately owned cattle grazing property with existing access tracks, high voltage transmission lines and a substation.
- Initial construction footprint of 509.7 hectares, with no construction involving soil disturbance during wet season months. Operational footprint after rehabilitation of 57.6 hectares.
- Minimum 1 km buffer to the Wet Tropics of Queensland World Heritage Area (WTQWHA) (scientific literature suggests 450 m is adequate to avoid edge effects), and complete avoidance of intact wet sclerophyll forest contiguous with the WTQWHA and all known habitat for the magnificent brood frog.
- An Indigenous Land Use Agreement with the Traditional Owners that would provide significant financial, training and employment benefits.
- A Community Benefit Program with funding of \$500,000 per year for the life of the wind farm (~25 years) to support local initiatives.
- Capital investment of \$700 million that would generate approximately \$200 million in regional direct and indirect expenditure.
- A generation capacity of 294 megawatts of clean energy to help decarbonise the electricity system and put downward pressure on electricity prices.

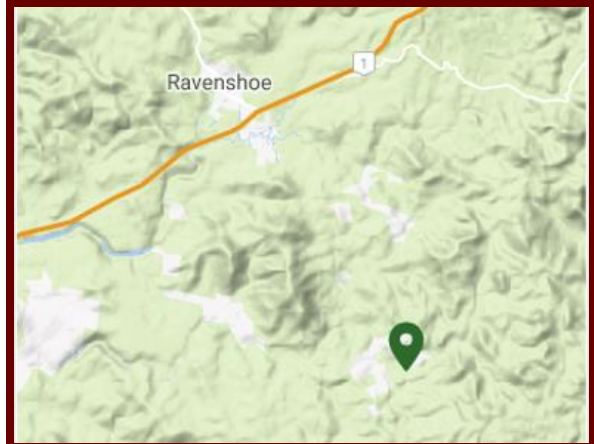
Nature positive plan

Commitments to achieve nature positive outcomes include:

- Rehabilitation of at least 70% of the temporary construction disturbance.
- Establishment of three magnificent brood frog nature reserves totalling 1,255 hectares and \$250,000 for scientific research.
- Salvage and relocation of denning hollows, with nest boxes and net bridges.
- First Nations led Bushfire Management Plan and Integrated Pest Management Plan to control widespread feral pests (pigs, dogs, cats) and invasive weeds (Candy leaf, Lantana camara, Siam weed), to significantly reduce known key threats to the values of the WTQWHA and improve the host property's habitat for key species.
- Significant, strategically located offset areas to provide managed and protected habitat for key species and improve habitat connectivity:

Species (* Not found on the site)	Impacted habitat (ha)	Offset areas	Impact: offset ratio
Magnificent brood frog	52.2 (potential)	1,255.8	1:24
Koala *	398.5 (potential)	3,784.8	1:9.5
Spectacled flying-fox *	481.4 (potential)	4,482.1	1:9
Masked owl	504.4 (known / potential)	4,508	1:9
Northern greater glider	447.9 (known / potential)	4,409.2	1:10

Location



The project area is about 15 km south of Ravenshoe in the Atherton Tablelands, North Queensland.



Video

Hear from the project area's Traditional Owners and lead ecologist about the design evolution of Wooroor Station Wind Farm and the opportunities it presents for local First Nations people.



Scan QR CODE to visit the website

Planning & Assessment

Queensland Government

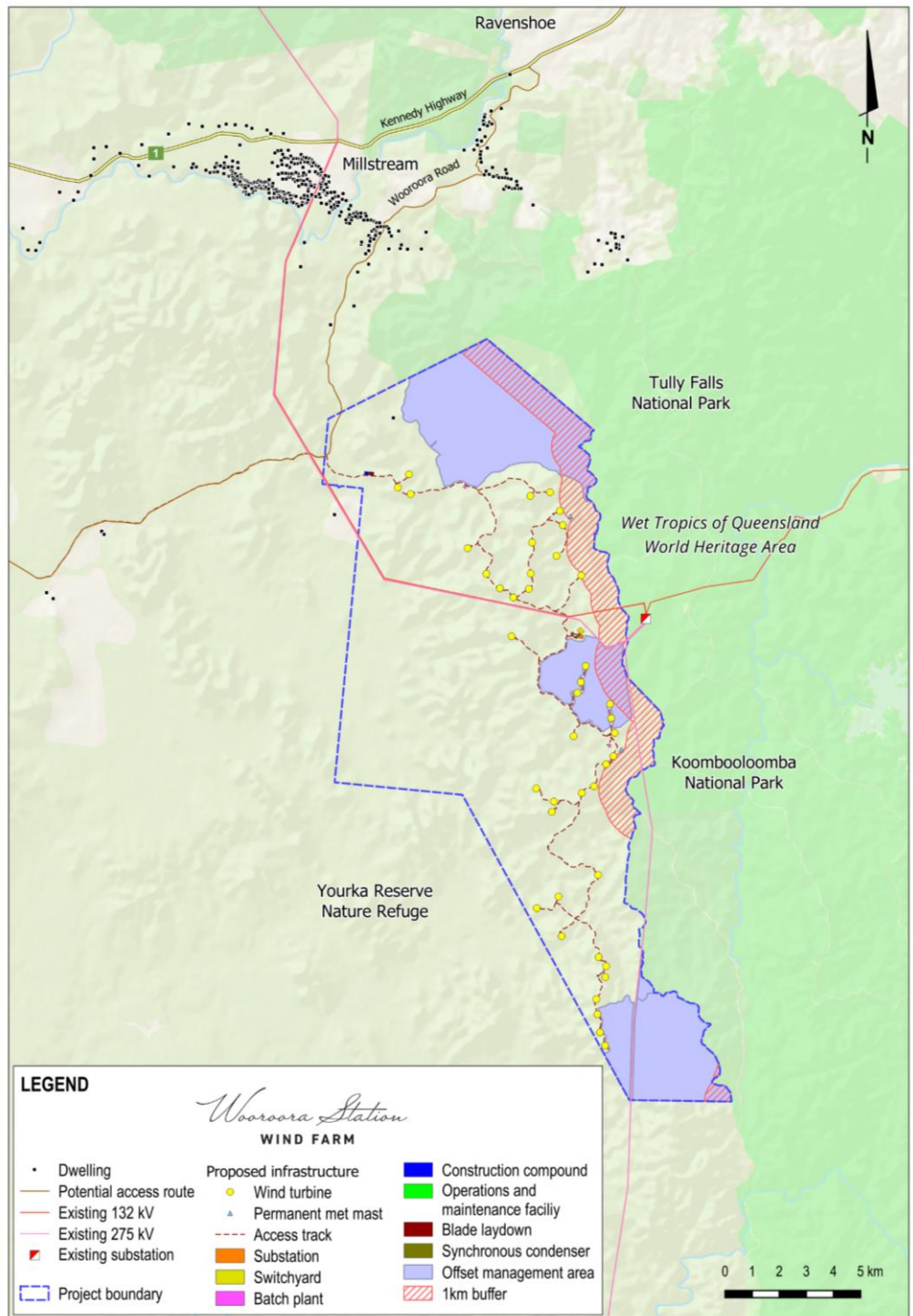
- 1 Site selection, initial concept and preliminary investigations ✓
- 2 Pre-lodgment meeting with State Assessment and Referral Agency (SARA) ✓
- 3 Studies and assessments (prescribed by SARA State code 23) ✓
- 4 Application and assessments lodged with SARA ✓
- 5 Requests from SARA for further information and responses ✓
- 6 Assessment ✓
- 7 Determination: approved **WE ARE HERE**



Commonwealth Government

- 1 Referral to the Department of Climate Change, Energy, the Environment and Water (DCCEEW) for review under the Commonwealth *Environment Protection and Biodiversity Conservation Act 1999*. ✓
- 2 Decision: Controlled Action, assessment by Public Environment Report (PER) ✓
- 3 DCCEEW guidelines issued for draft PER ✓
- 4 Preparation of draft PER ✓
- 5 Draft PER lodged for review ✓
- 6 Draft PER placed on public exhibition ✓
- 7 Preparation of final PER taking into consideration comments in submissions ✓
- 8 Final PER submitted to DCCEEW **WE ARE HERE**
- 9 Determination

Wooroor Station Wind Farm site map - 42 wind turbines



The project area is entirely within Wooroor Pastoral Station, a large cattle grazing property about 15 km south of Ravenshoe. The site layout includes a minimum 1 km buffer to the Wet Tropics of Queensland World Heritage Area (WTQWHA) and significant, strategically located environmental offset areas. These include thousands of hectares of magnificent brood frog nature reserves and protected habitat for other key species, and will improve habitat connectivity between the WTQWHA, contiguous wet sclerophyll forest on the host property and Yourka Reserve Nature Refuge. The wind farm would connect to the existing 275 kV powerline on the site and have a generation capacity of 294 megawatts of clean energy.

More information

Wooroor Station Wind Farm Information Hub, 55 Grigg St, Ravenshoe. Open Thursday mornings and by appointment.

Telephone: 1800 731 296.

Email: info@wooroorastationwindfarm.com.au.

Newsletter sign-up: arkenergy.com.au/mailling-list-details

Website: wooroorastationwindfarm.com.au or scan QR code right



Scan QR CODE to visit the website