

# St Patricks Plains Wind Farm



Photomontage showing what St Patricks Plains Wind Farm would look like from Highland Lakes Road near Steppes Hall.

## Project documents on public exhibition

The Development Application (DA) and Environmental Impact Statement (EIS) for the St Patricks Plains Wind Farm are on public exhibition for a period of six weeks from Saturday 12 August 2023 until Monday 25 September 2023.

During this period documents are available online as follows:

- The EIS on the Environment Protection Authority's Tasmania (EPA) website.
- The full permit application, including the EIS, on the Central Highlands Council's website.
- All documents including a short summary of the proposal and key points from the EIS on the project website.

Direct access to the online pages for these documents is available by scanning the QR codes right on a mobile device.

Hard copies are also on display at:

- Council's offices at 19 Alexander St, Bothwell during normal business hours
- The St Patricks Plains Wind Farm Information Centre at 16A Patrick St, Bothwell. The project information centre will be open 10am – 4pm Fridays and Saturdays during the exhibition period for added convenience.

If further assistance is required to access a copy of the EIS, community members can contact Caroline Lindus on (03) 6165 0443 or [enquiries@eraplanning.com.au](mailto:enquiries@eraplanning.com.au).

## Making a submission

During the exhibition period any person or group can make a submission on any aspect of the proposal. Submissions can be made either by letter to the General Manager, Central Highlands Council, 19 Alexander Street, Bothwell TAS 7030 or by email to [submissions@centralhighlands.tas.gov.au](mailto:submissions@centralhighlands.tas.gov.au).

The deadline for submissions is 5pm, Monday 25 September 2023. Submissions should include name and address of the submitter, date of submission, and refer to the development application: **St Patricks Plains Wind Farm (DA 2023/34)**. Guidance on preparing a submission is available from the EPA website at [www.epa.tas.gov.au/public-submission-guide](http://www.epa.tas.gov.au/public-submission-guide).

EIS on EPA website



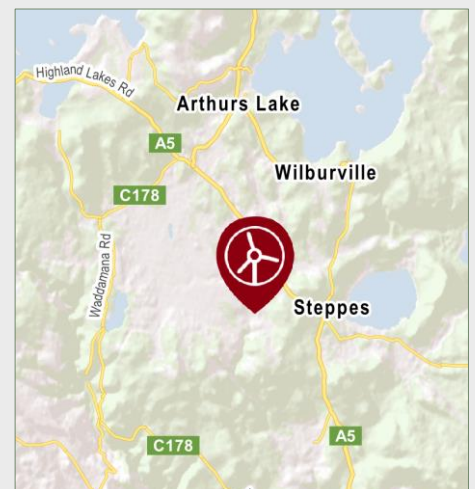
Full application  
including EIS on Council  
website



Public exhibition page  
on project website



## Location



The site for St Patricks Plains Wind Farm is about 10 km south-east of Miena and 25 km north of Bothwell in the Central Highlands.

Key project information:

- Up to 47 wind turbines.
- Wind turbine tip height of 231m.
- Up to 300 megawatts of clean, renewable energy.
- Up to 200 jobs during construction.
- Up to 20 full-time jobs during operation.
- Construction period of 24 months.
- Community Benefit Fund for the life of the wind farm.

## Planning & assessment

## St Patricks Plains Wind Farm site map – 47 wind turbines

The Development Application will be determined by Central Highlands Council and the Environmental Impact Statement (EIS) will be assessed by the Environment Protection Authority Tasmania (EPA).

1 Site selection and preliminary investigations ✓

2 Referral to the Australian Department of Climate Change, Energy, the Environment and Water (DCCEEW) for review under the Commonwealth *Environment Protection and Biodiversity Conservation Act 1999* (EPBC Act).

\* Determined a Controlled Action with assessment under bilateral agreement (Ref 2019/8497).

3 Notice of Intent lodged with the EPA ✓

4 Project Specific Guidelines for the EIS issued by the EPA ✓

5 Studies, assessments, site design ✓

6 Preparing EIS for lodgment ✓

7 Development application (DA) and EIS submitted to Central Highlands Council ✓

8 EIS referred by Council to the EPA ✓

9 EIS on exhibition for public comment **WE ARE HERE**

10 Responses to submissions and requests for additional information (if required)

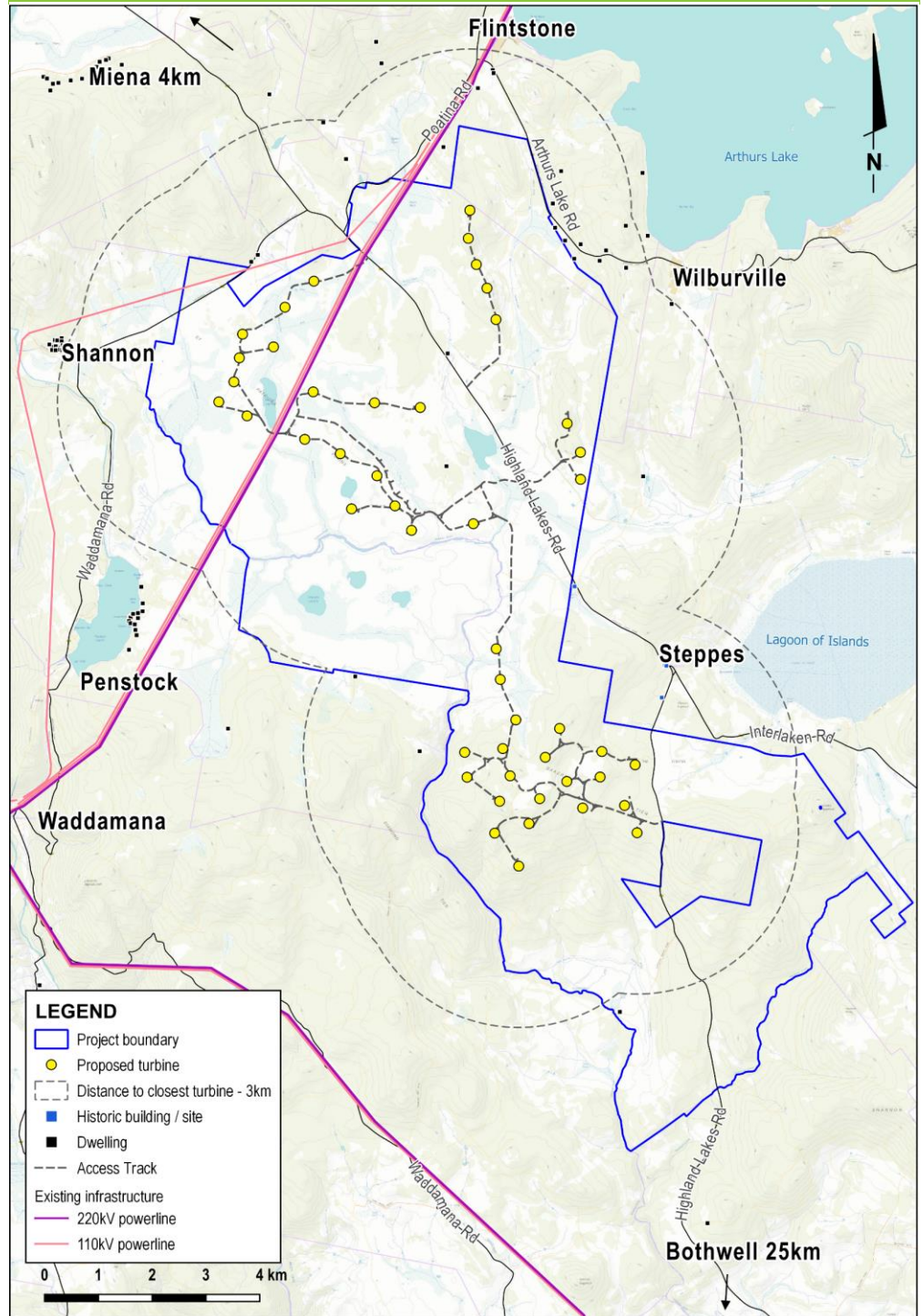
11 Assessment by the EPA

12 EPA approval conditions provided to Council

13 Assessment by Council

14 Determination by Council

15 Determination by DCCEEW



**Next steps** - All submissions will be reviewed by the Council and the EPA. Ark Energy will be asked to provide a response to all relevant public submissions and may be required to provide a supplement with additional information or make changes to the proposal in response to issues raised.

### More information

**Visit** - St Patricks Plains Wind Farm Information Centre, 16a Patrick Street, Bothwell. 10am - 4pm Fridays and Saturdays during the exhibition period.

**Tel** - 1800 731 296.

**Email** - [info@stpatricksplainswindfarm.com.au](mailto:info@stpatricksplainswindfarm.com.au)

**Register for updates** - [arkenergy.com.au/mailling-list-details](http://arkenergy.com.au/mailling-list-details)

**Website** - [stpatricksplainswindfarm.com.au](http://stpatricksplainswindfarm.com.au) or scan QR code



Scan QR CODE to visit the website