

Details for CCC meeting No 5
Venue: Upper Hunter Shire Council
Address: 34-40 Vennacher Street, Merriwa
Date: Wednesday 22 January 2014
Time: 11.00am to 2.00pm

EPURON

**Liverpool Range Wind Farm
Community Consultation Committee Meeting No 5
22 January 2014**

CONSULTATION.....COMMUNITY.....STAKEHOLDER.....COLLABORATION

Presentation Contents for CCC Meeting No 5

1. CCC membership update
2. Epuron action items from CCC meeting 4
3. Development update and current project information
4. CCC discussion points
5. Next steps and timing
6. Communications and other information

CCC Membership Update

Membership Group	Representative
Independent Chairperson	<ul style="list-style-type: none"> Danielle Annells – Twyfords Consulting
Involved Landowners	<ul style="list-style-type: none"> Ant Martin Anne-Louise Capel
Uninvolved Landowners	<ul style="list-style-type: none"> Linda Gant Greg Piper
Local Councils	<ul style="list-style-type: none"> Michael Marks – Warrumbungle Shire Council Councillor Ron Campbell – Upper Hunter Shire Council Sean Constable – Upper Hunter Shire Council Catherine Van Laeren – Mid Western Regional Shire Council Donna Ausling – Liverpool Plains Shire Council
Local Business / Groups / Associations	<ul style="list-style-type: none"> Graeme Booker – Coolah Caravan Park Julia Imrie – Mudgee District Environment Group
Observer	<ul style="list-style-type: none"> Pauline Dunne – NSW Office of Environment & Heritage
Proponent	<ul style="list-style-type: none"> Brian Hall - Epuron

Summary of Epuron action items from CCC meeting 4

1. Provide an overview of the various powerline options considered for project.
 - Maps showing the various powerline options considered for the project is provided further in this presentation.
2. Provide estimate number of hectares of vegetation to be cleared for the preferred powerline route.
 - Approx 125 hectares
3. Provide a guide as to why the Ulan powerline route was selected for the project.
 - Selection considerations for Ulan powerline corridor is provided further in this presentation.
4. Implement a visitor feedback form to be available at the public display in Coolah and Cassilis.
 - Draft copy available for discussion.

Summary of Epuron action items from CCC meeting 4....(continued)

5. Establish an additional photomontage display at Merriwa Library.
 - Arrangements yet to be finalised.
6. Organise a business information meeting in Merriwa (similar to Coolah meeting).
 - Scheduled to occur 21 January.
7. Actions arising from the Coolah Business Meeting.
 - Ongoing.
8. Prepare summary of attendance and responses from Coolah Business Meeting.
 - Summary is provided further in this presentation.
9. Prepare draft letter on behalf of CCC for submission during exhibition of EA.
 - To be prepared.

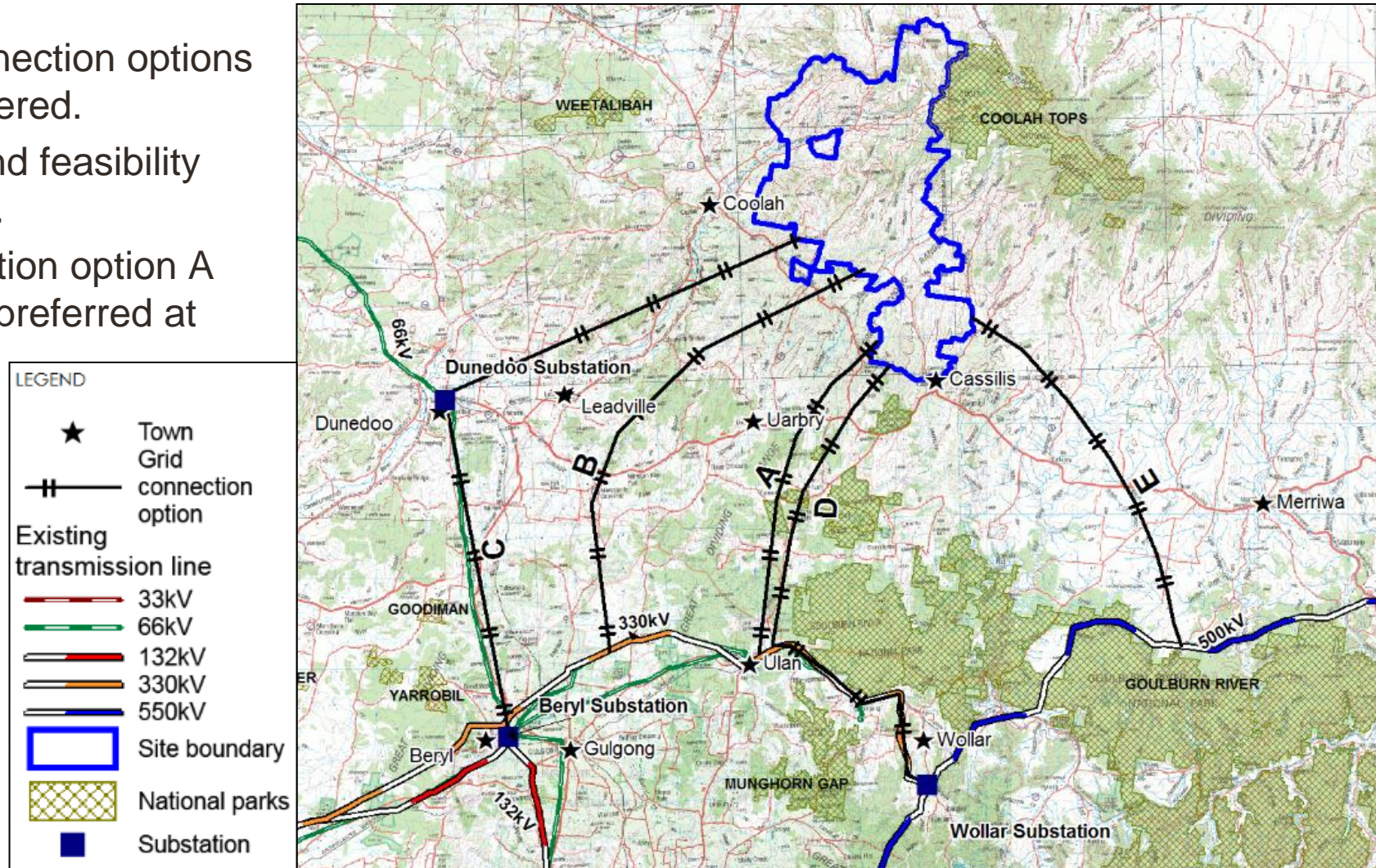
Development Update

- EA responding to Adequacy was submitted to DPI in December 2013.
- Anticipate public exhibition early 2014.
- EPBC Act referral to be lodged early 2014.
- Arrangements to secure the powerline access route are progressing positively.
- Wind farm landowners continue transition to long term lease arrangements.
- Updating annual wind monitoring resource data and yield assessments.
- Consultation with community and stakeholders continues.
- Merriwa Business Meeting held 21 January.
- Epuron newsletter released December 2013 providing general project update and latest industry information.



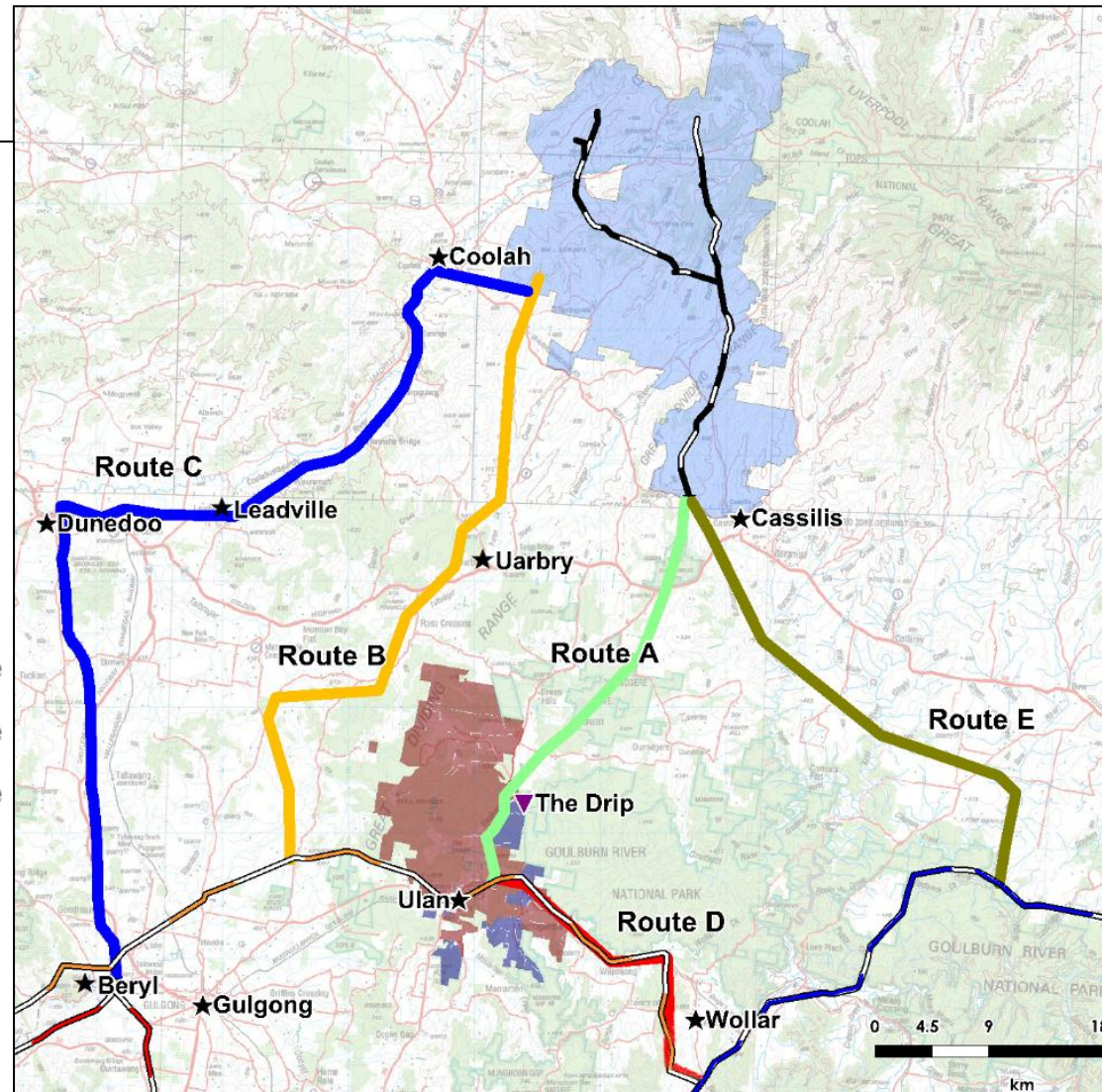
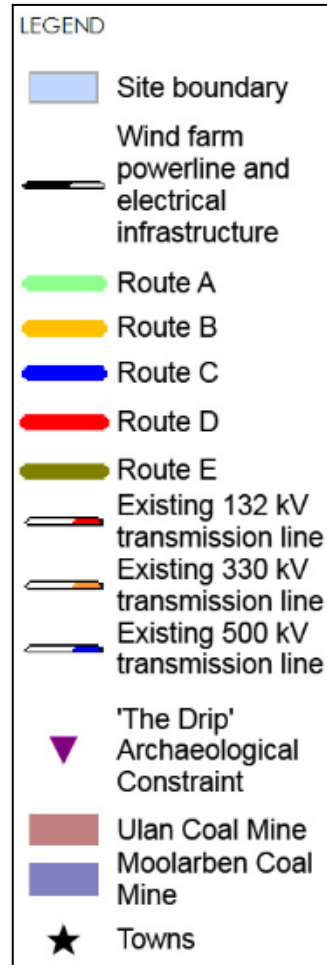
Grid Connection Options

- Six grid connection options were considered.
- Technical and feasibility assessment.
- Grid connection option A selected as preferred at 330kV.



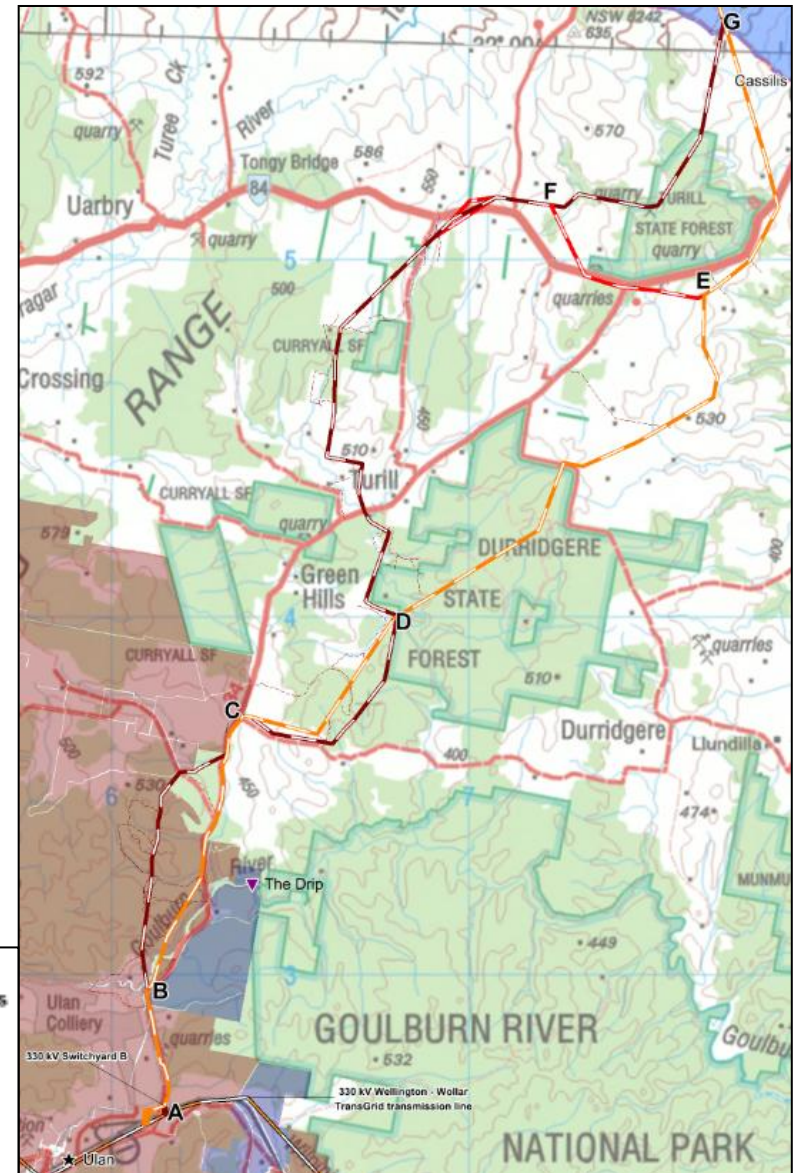
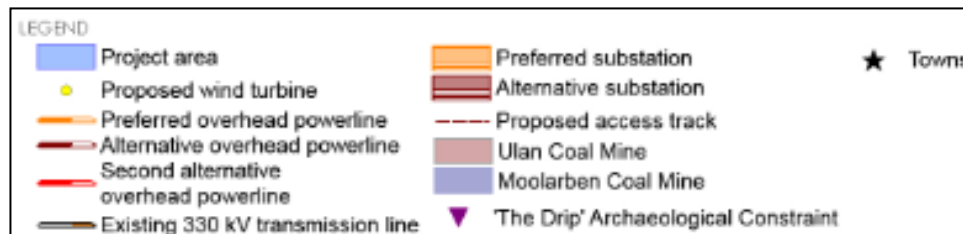
Powerline Corridor Options

- Six powerline corridor options were considered
- Corridor A was selected for further development
- Connection enquiry lodged with grid owner Transgrid



Powerline Route

- A preferred and alternate powerline route has been identified
- Connecting into existing Transgrid 330kV transmission line near Ulan
- New overhead powerline will be single pole type structures
- 60m wide easement



Guide to selection of Ulan Powerline Route

- Key considerations for the selection of the Ulan powerline route as preferred include;
 - Overall length – 35km (shortest)
 - Number of land parcels – 57 (second lowest)
 - Number of land owners – 11 (lowest)
 - Dwellings within 1km – 7 (second lowest)
 - Estimated connection costs – \$65 million (lowest)
 - Land access constraints – low/medium/high
 - Environmental constraints – low/medium/high
 - Grid connection constraints – low/medium/high
- Other assessment notes;
 - Assessed as most viable connection corridor option overall
 - Participating landowners willing to enter agreements
 - There are land limitations proximate to Ulan and Moolarben mine operations
 - Traversing DSC Area
 - Sufficient connection capacity available

Summary of Coolah/Cassilis Business Meeting attendance & Response

- Total people in attendance – 46
- Questionnaires completed – 29.....represented by the following business categories;
 - Agriculture/Farming/Mechanical/Hardware – 6
 - Food/Café/Shop/Supermarket – 4
 - Accommodation/Hotel – 2
 - Concreting/Electrical/Plumbing – 6
 - Health/Beauty – 2
 - Excavation/Earthworks/Civil – 2
 - Accounting/Banking – 1
 - Upholstery – 1
 - Steel/Recycling/Welding – 1
 - Printing/News/Photography – 1
 - Weeds/Spraying – 1
 - Real estate – 1
 - General interest – 1

Summary of Coolah/Cassilis Business Meeting attendance & Response

- General comments received and issues raised include;
 - Difficulty to keep families and children in the area
 - Generally in favour of the project proceeding
 - Interest in wind farms generally and keen to work with industry in Australia
 - Some concerned for ability of local community members to contribute goods and services
 - A few attendees noted they would like to tour the wind farm during the construction phase

- Questions asked of group.....

➤ Do you have plans to grow your business	Yes	29 of 29
➤ Are you interested to join with other businesses for project	Yes	27 of 29
➤ Do you want to be involved in future business meetings	Yes	28 of 29
➤ Would you like to receive the wind farm project newsletter	Yes	24 of 29
➤ Would you like email copy of Epuron slides (emailed 9/1/13)	Yes	16 of 29

Merriwa Business Meeting

- A separate presentation was prepared for the Merriwa Business Meeting held on 21 January 2014 which highlighted matters including;
 - Project overview
 - Estimated project expenditure
 - Estimated project employment
 - Areas of job skills and contracting requirements
 - Project timing
- The presentation will be made available on the website.

CCC Discussion Points

- Community consultation and feedback
 - Any feedback or communication to report from the community
- Proposed wind farm site visit.
 - Offer from Pauline Dunne at OEH
- Community Enhancement Fund
 - Any further thinking on required community support and preferred delivery model
- Any carry over agenda items or discussion points from previous meeting

Next Steps and Timing

- Landowner & community consultation - Ongoing
- EA adequacy submission - Completed December 2013
- Next newsletter - Completed prior to Christmas
- EA public exhibition by DPI - Early 2014 (dates TBC by DPI)
- CCC Meeting No 6 - To be held during public exhibition
- Community Open Day - To be held during public exhibition
- Merriwa Business Meeting - Planned for 21 January

Glossary

- DPI Department of Planning & Infrastructure
- CCC Community Consultation Committee
- EA Environmental Assessment
- MW Megawatt
- OEH Office of Environment & Heritage
- kV Kilovolt
- EPA Environmental Protection Authority
- LVIA Landscape & Visual Impact Assessment
- BA Biodiversity Assessment
- NIA Noise Impact Assessment
- LRWF Liverpool Range Wind Farm
- WTG Wind turbine generator

Consultation – Communication and Feedback

- Consultation is a two-way-street and we're always listening
- Feedback and suggestions are important to us
- Available communication channels include;
 - Epuron corporate website: www.epuron.com.au
 - Liverpool project website: www.liverpoolrangewindfarm.com.au
 - Mailing address: Liverpool Range Wind Farm
Level 11, 75 Miller Street
North Sydney...NSW...2060
 - Phone: 02 8456 7400
 - Fax: 02 9922 6645
 - Email: liverpoolrange@epuron.com.au
 - Senior Project Manager: Brian Hall
b.hall@epuron.com.au
 - Meetings Arranged by appointment

THANK-YOU
and
PLEASE SEND US YOUR FEEDBACK
to
info@epuron.com.au

EPURON Pty Ltd

75 Miller Street
North Sydney
NSW 2060
AUSTRALIA

T +61 2 8456 7400
F +61 2 9922 6645

www.epuron.com.au



Liverpool wind monitoring mast and Sodar