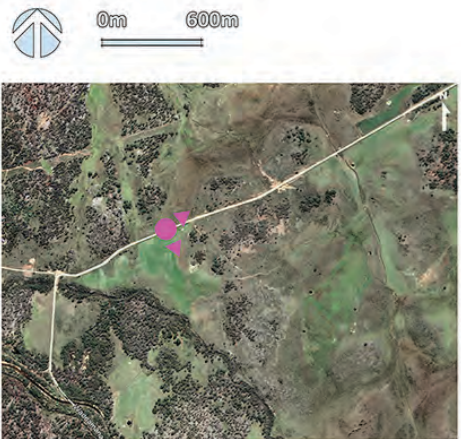


St Patricks Plains Wind Farm Revised Layout Jan 2021 – 50 Turbines

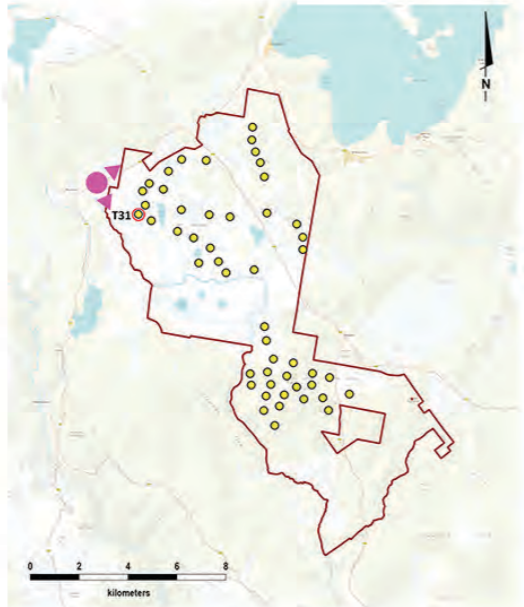


Photomontage view from Waddamana Rd (Part 2)
 Approximate distance to closest partially visible wind turbine T31 is 2,225 metres

Legend
 Approximate photo location and indicative view direction toward St Patricks Plains Wind Farm turbines



Aerial of photograph location - Waddamana Road



Site layout plan - 50 turbines



Previous Layout

General Notes

Photos taken at 8:08am on 17th October 2019.
 Coordinates: E:480965, N:5345013
 Elevation: 916m AHD
 Camera: Nikon D610, 50mm 1:1.4D Lens
 Original Format - A0 Landscape
 240m tip height, 150m hub height and 180m rotor.

This viewpoint has a horizontal view angle of around 60 degrees.
 This is a preliminary layout only and is subject to change as detailed planning proceeds.
 Closest visible turbine indicated by red line.

* The purpose of this Photomontage & Wireframe is to provide a 'representation' of the possible visual impact of this project for the purpose of discussion. The layout is subject to change in accordance with the planning process. These images give a reasonable impression of the scale of turbines and the distance to turbines, but due to vegetation screening and the complexity of working off useful landscape features, they cannot be 100% accurate. A static image cannot convey turbine movement, different lighting, weather and seasonal conditions that vary through time and resolution of image.

St Patricks Plains Wind Farm Revised Layout Jan 2021 – 50 Turbines

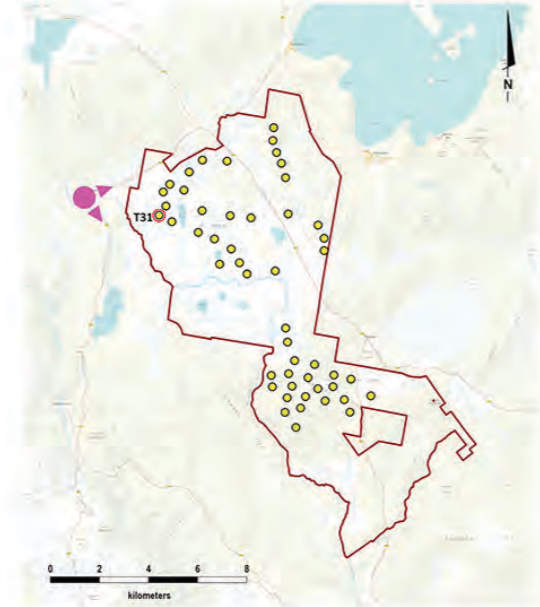


Photomontage view from Shannon Road
 Approximate distance to closest visible wind turbine T31 is 3,030 metres

Legend
 Approximate photo location and indicative view direction toward St Patricks Plains Wind Farm turbines



Aerial of photograph location – Shannon village



Site layout plan – 50 turbines



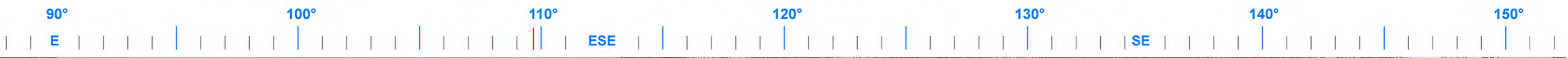
Previous Layout

General Notes
 Photos taken at 7:50am on 17th October 2019.
 Coordinates: E:479948, N:5344843
 Elevation: 934m AHD
 Camera: Nikon D610, 50mm 1:1.4D Lens
 Original Format - A0 Landscape
 240m tip height, 150m hub height and 180m rotor.

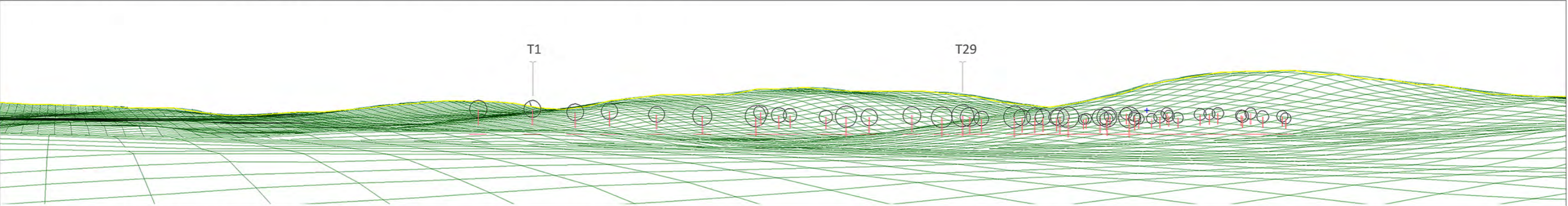
This viewpoint has a horizontal view angle of around 75 degrees.
 This is a preliminary layout only and is subject to change as detailed planning proceeds.
 Closest turbine indicated by red line.

* The purpose of this Photomontage & Wireframe is to provide a 'representation' of the possible visual impact of this project for the purpose of discussion. The layout is subject to change in accordance with the planning process. These images give a reasonable impression of the scale of turbines and the distance to turbines, but due to vegetation screening and the complexity of working off useful landscape features, they cannot be 100% accurate. A static image cannot convey turbine movement, different lighting, weather and seasonal conditions that vary through time and resolution of image.

St Patricks Plains Wind Farm Revised Layout Jan 2021 – 50 Turbines



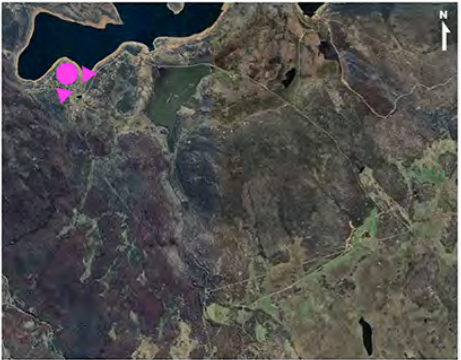
Photomontage view Miena (S33) - Approximate distance to closest visible wind turbine T1 is 13,020 metres.



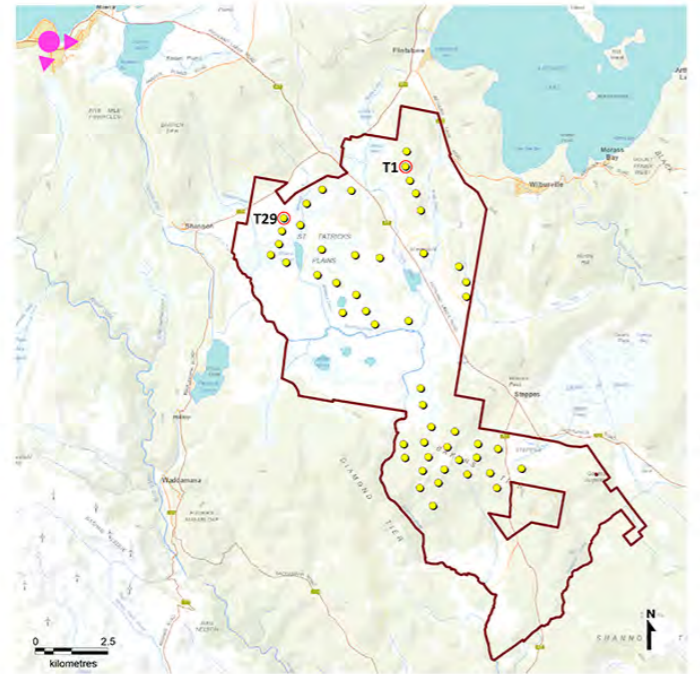
Wireframe view Miena (S33) - Approximate distance to closest wind turbine T29 is 10,150 metres.

Legend

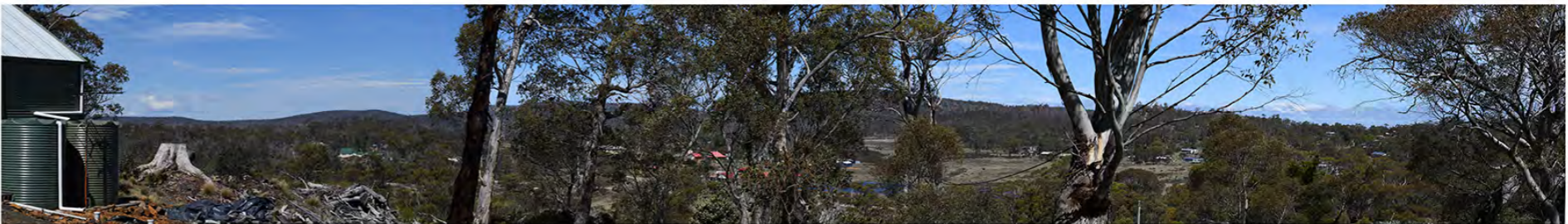
Approximate photo location and indicative view direction toward St Patricks Plains Wind Farm turbines



Aerial location of photo viewpoint in Miena



Site layout plan



Panorama view 102°

General Notes

Photos taken at 2:57pm on 14th November 2019.
 Coordinates: E:475234, N:5351287
 Elevation: 1093m AHD
 Camera: Nikon D610, 50mm 1:1.4D Lens
 Original Format - A0 Landscape
 240m tip height, 150m hub height and 180m rotor.

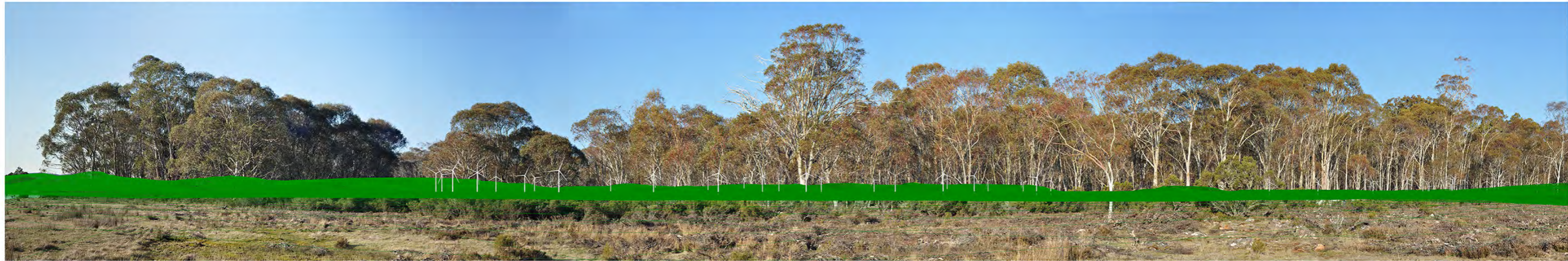
This viewpoint has a horizontal view angle of around 65 degrees.

This is a preliminary layout only and is subject to change as detailed planning proceeds.

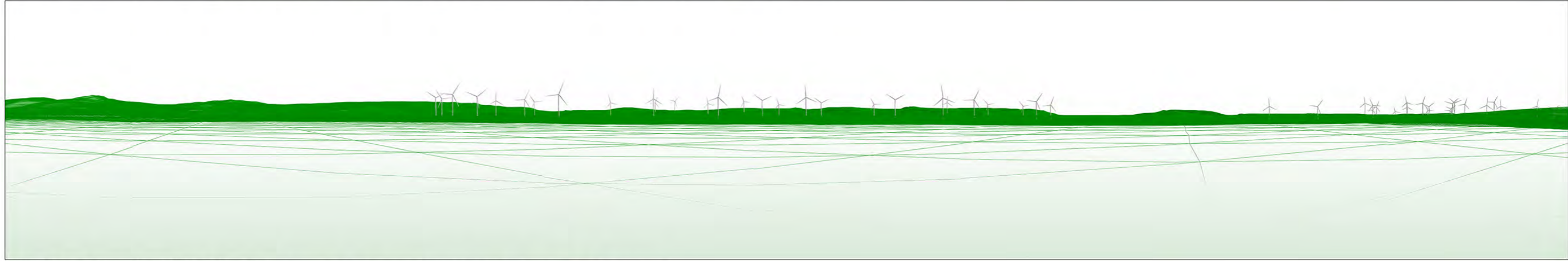
Closest visible turbine indicated by red line.

* The purpose of this Photomontage & Wireframe is to provide a 'representation' of the possible visual impact of this project for the purpose of discussion. The layout is subject to change in accordance with the planning process. These images give a reasonable impression of the scale of turbines and the distance to turbines, but due to vegetation screening and the complexity of working off useful landscape features, they cannot be 100% accurate. A static image cannot convey turbine movement, different lighting, weather and seasonal conditions that vary through time and resolution of image.

St Patricks Plains Wind Farm Revised Layout Jan 2021 – 50 Turbines

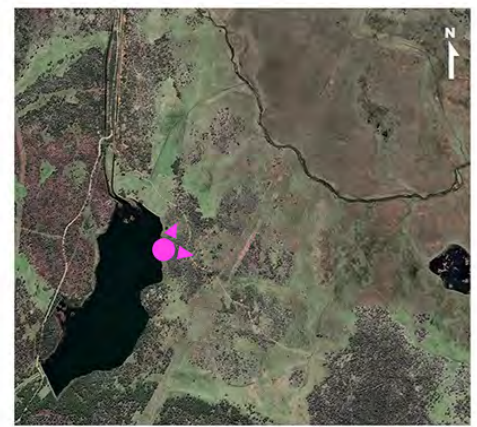


Panorama with wireframe overlay view from Breakfast Bay Approximate distance to closest wind turbine T31 is 3,900 metres

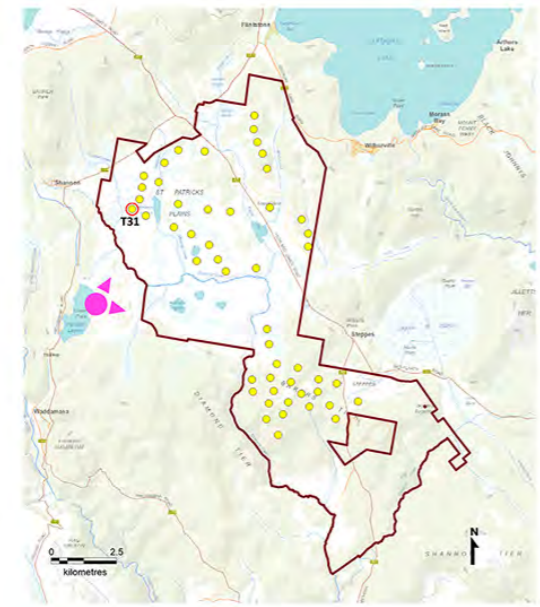


Wireframe view from Breakfast Bay Approximate distance to closest wind turbine T31 is 3,900 metres

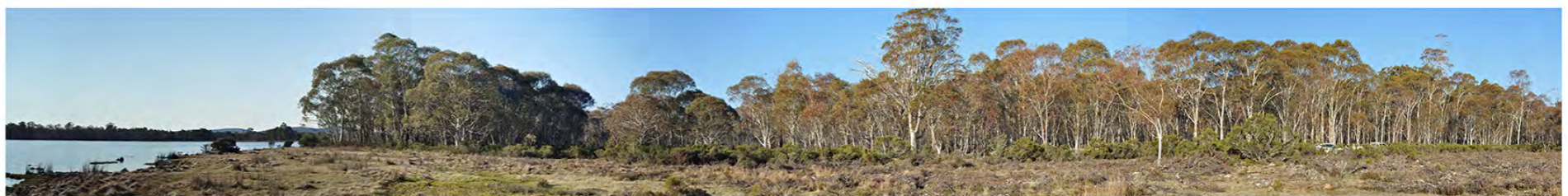
Legend
 Approximate photo location and indicative view direction toward St Patricks Plains Wind Farm turbines



Aerial of Breakfast Bay



Site layout plan – 50 turbines



Parorama

General Notes

Photos taken at 10:20am on 2nd March 2020
 Coordinates: E:481408, N:5340273
 Elevation: 13.6m
 Camera: Nikon D610, 50mm 1:1.4D Lens
 Original Format - A0 Landscape
 240m tip height, 150m hub height and 180m rotor.

This is a preliminary layout only and is subject to change as detailed planning proceeds.
 Closest turbine indicated by red line.

* The purpose of this Photomontage & Wireframe is to provide a 'representation' of the possible visual impact of this project for the purpose of discussion. The layout is subject to change in accordance with the planning process. These images give a reasonable impression of the scale of turbines and the distance to turbines, but due to vegetation screening and the complexity of working off useful landscape features, they cannot be 100% accurate. A static image cannot convey turbine movement, different lighting, weather and seasonal conditions that vary through time and resolution of image.

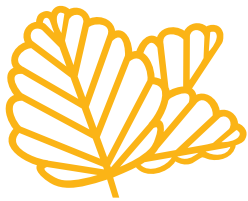
ATTACHMENT G

TURBINE DISTANCE TO NEAREST ROAD

The scale of the overall development is 50 turbines 230m in height, spread across some 10,000 hectares of land and stretched along ~12 kilometres of a State highway designated as a tourist route. The size of the turbines means the wind farm is seen across a large geographic area and from multiple viewing locations by residents and visitors, some expecting an isolated natural landscape with others recognising the altered landscape character of the area. The size of individual turbines in close proximity to the road in places means these particular elements have an overpowering presence that increases their individual magnitude of impact.

Source: Epuron

| Turbine Number | Distance to Closest Road (m) | Closest Road |
|-----------------------|-------------------------------------|---------------------|
| 1 | 1545.6 | Arthurs Lake Road |
| 2 | 1331.7 | Arthurs Lake Road |
| 3 | 1312.8 | Arthurs Lake Road |
| 4 | 1163.4 | Arthurs Lake Road |
| 5 | 408.1 | Highland Lakes Road |
| 6 | 1249.6 | Highland Lakes Road |
| 7 | 1211.8 | Highland Lakes Road |
| 8 | 981.3 | Highland Lakes Road |
| 9 | 1027.0 | Arthurs Lake Road |
| 10 | 353.2 | Arthurs Lake Road |
| 11 | 1570.7 | Arthurs Lake Road |
| 12 | 918.8 | Arthurs Lake Road |
| 13 | 1006.3 | Waddamana Road |
| 14 | 1470.7 | Waddamana Road |
| 15 | 2430.4 | Arthurs Lake Road |
| 16 | 3030.5 | Arthurs Lake Road |
| 17 | 2622.6 | Arthurs Lake Road |
| 18 | 2309.9 | Highland Lakes Road |
| 19 | 2297.8 | Highland Lakes Road |
| 20 | 2240.2 | Highland Lakes Road |
| 25 | 3041.3 | Highland Lakes Road |
| 29 | 970.6 | Waddamana Road |
| 30 | 1096.6 | Waddamana Road |
| 31 | 1833.5 | Waddamana Road |
| 32 | 1634.2 | Waddamana Road |
| 33 | 2300.8 | Waddamana Road |
| 39 | 1165.7 | Highland Lakes Road |
| 42 | 1867.9 | Highland Lakes Road |
| 43 | 2142.3 | Highland Lakes Road |
| 44 | 2501.6 | Highland Lakes Road |
| 45 | 3473.9 | Highland Lakes Road |
| 46 | 3438.5 | Highland Lakes Road |
| 47 | 3064.5 | Highland Lakes Road |
| 48 | 2762.4 | Highland Lakes Road |
| 49 | 2640.3 | Highland Lakes Road |
| 50 | 1696.5 | Highland Lakes Road |
| 51 | 1999.2 | Highland Lakes Road |
| 52 | 2105.7 | Highland Lakes Road |
| 53 | 2403.2 | Highland Lakes Road |
| 54 | 2641.7 | Highland Lakes Road |
| 55 | 942.7 | Highland Lakes Road |
| 56 | 1364.2 | Highland Lakes Road |
| 57 | 970.9 | Highland Lakes Road |
| 58 | 602.9 | Highland Lakes Road |
| 59 | 500.3 | Highland Lakes Road |
| 60 | 482.0 | Highland Lakes Road |
| 68 | 1407.7 | Arthurs Lake Road |
| 69 | 2850.9 | Highland Lakes Road |
| 70 | 1582.9 | Highland Lakes Road |
| 71 | 280.5 | Highland Lakes Road |



**inspiring
place**

210 Collins Street Hobart 7000 | 62 311 818 | info@inspiringplace.com.au