

St Patricks Plains Wind Farm Revised Layout Jan 2021 – 50 Turbines



Photomontage view Highland Lakes Rd

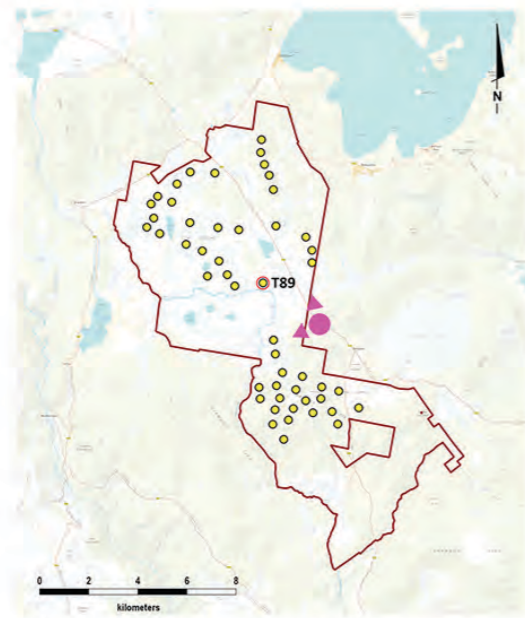
Approximate distance to closest fully visible wind turbine T89 is 2,850 metres

Legend

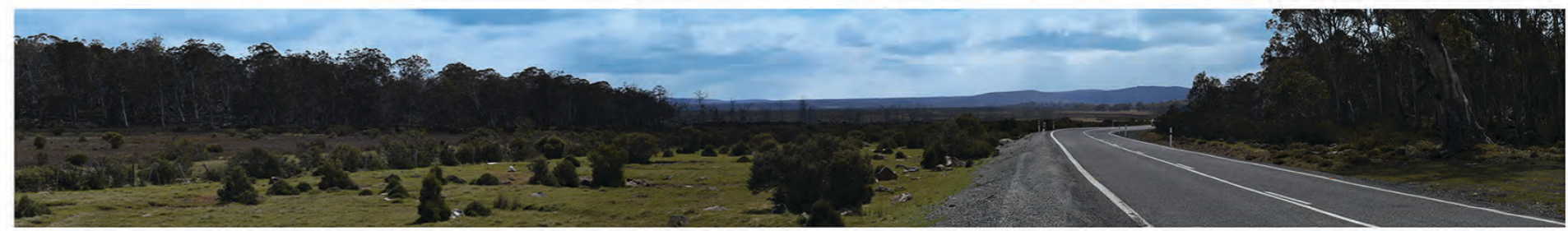
Approximate photo location and indicative view direction toward St Patricks Plains Wind Farm turbines



Aerial of photograph location – Highland Lakes Road between Steppes Homestead and Hall



Site layout plan – 50 turbines



90° panorama

General Notes

Photos taken at 2.15 pm on 12th November 2019
 Coordinates: E: 489928, N: 5339947
 Elevation: 892m AHD
 Camera: Nikon D610, 50mm 1:1.4D Lens
 Original Format - A0 Landscape
 240m tip height, 150m hub height and 180m rotor.

This viewpoint has a horizontal view angle of around 70 degrees.
 This is a preliminary layout only and is subject to change as detailed planning proceeds.
 Closest visible turbine indicated by red line.

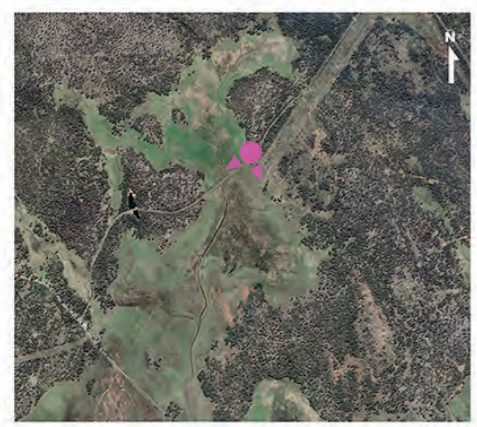
* The purpose of this Photomontage & Wireframe is to provide a 'representation' of the possible visual impact of this project for the purpose of discussion. The layout is subject to change in accordance with the planning process. These images give a reasonable impression of the scale of turbines and the distance to turbines, but due to vegetation screening and the complexity of working off useful landscape features, they cannot be 100% accurate. A static image cannot convey turbine movement, different lighting, weather and seasonal conditions that vary through time and resolution of image.

St Patricks Plains Wind Farm Revised Layout Jan 2021 – 50 Turbines

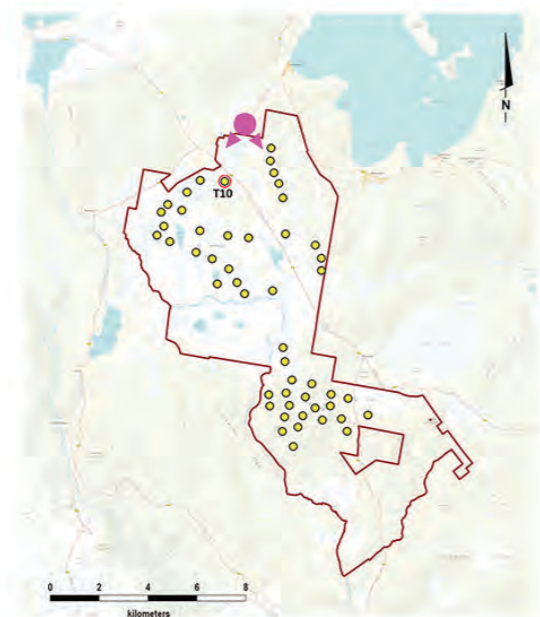


Photomontage view from Poatina Road
 Approximate distance to closest visible wind turbine T10 is 2,510 metres

Legend
 Approximate photo location and indicative view direction toward St Patricks Plains Wind Farm turbines



Aerial of photograph location - Poatina Road



Site layout plan – 50 turbines



Previous Layout

General Notes
 Photos taken at 11:01am on 11th November 2019.
 Coordinates: E:486516, N:5348436
 Elevation: 916m
 Camera: Nikon D610, 50mm 1:1.4D Lens
 Original Format - A0 Landscape
 240m tip height, 150m hub height and 180m rotor.

This viewpoint has a horizontal view angle of around 79 degrees.
 This is a preliminary layout only and is subject to change as detailed planning proceeds.
 Closest turbine indicated by red line.

* The purpose of this Photomontage & Wireframe is to provide a 'representation' of the possible visual impact of this project for the purpose of discussion. The layout is subject to change in accordance with the planning process. These images give a reasonable impression of the scale of turbines and the distance to turbines, but due to vegetation screening and the complexity of working off useful landscape features, they cannot be 100% accurate. A static image cannot convey turbine movement, different lighting, weather and seasonal conditions that vary through time and resolution of image.

St Patricks Plains Wind Farm Revised Layout Jan 2021 – 50 Turbines



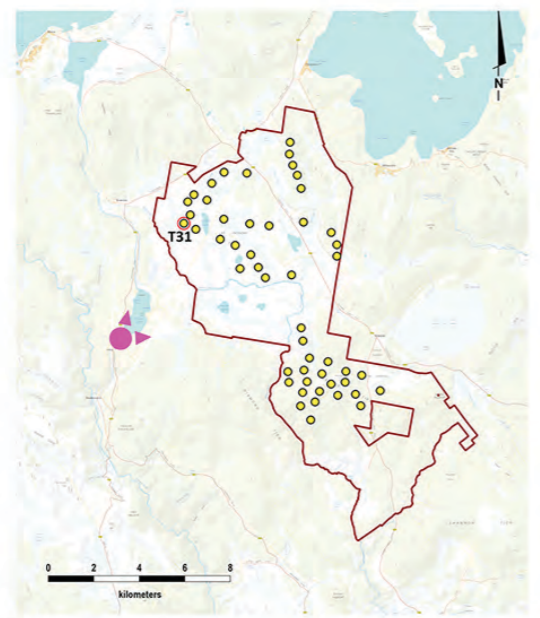
Photomontage view from Penstock Lagoon (Lily Pond)
 Approximate distance to closest visible wind turbine T31 is 5,530 metres

Legend

- Approximate photo location and indicative view direction toward St Patricks Plains Wind Farm turbines



Aerial of photograph location – Penstock Lagoon



Site layout plan – 50 turbines



Previous Layout

General Notes
 Photos taken at 11:53am on 26th June 2019
 Coordinates: E: 480144, N: 5339023
 Elevation: 920m AHD
 Camera: Nikon D610, 50mm 1:1.4D Lens
 Original Format - A0 Landscape
 240m tip height, 150m hub height and 180m rotor.

This viewpoint has a horizontal view angle of around 72 degrees.
 This is a preliminary layout only and is subject to change as detailed planning proceeds.
 Closest visible turbine indicated by red line.

* The purpose of this Photomontage & Wireframe is to provide a 'representation' of the possible visual impact of this project for the purpose of discussion. The layout is subject to change in accordance with the planning process. These images give a reasonable impression of the scale of turbines and the distance to turbines, but due to vegetation screening and the complexity of working off useful landscape features, they cannot be 100% accurate. A static image cannot convey turbine movement, different lighting, weather and seasonal conditions that vary through time and resolution of image.

St Patricks Plains Wind Farm Revised Layout Jan 2021 – 50 Turbines



Photomontage view from Waddamana Rd (Part 1)

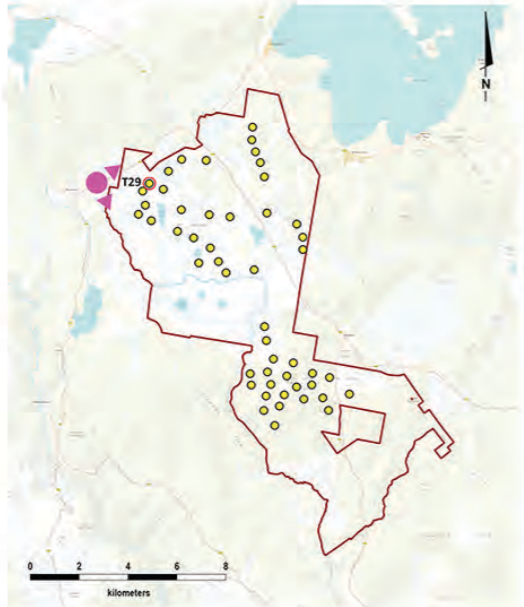
Approximate distance to closest visible wind turbine T29 is 2,360 metres

Legend

Approximate photo location and indicative view direction toward St Patricks Plains Wind Farm turbines



Aerial of photograph location - Waddamana Road



Site layout plan - 50 turbines



Previous Layout

General Notes

Photos taken at 8:08am on 17th October 2019.
 Coordinates: E:480965, N:5345013
 Elevation: 916m AHD
 Camera: Nikon D610, 50mm 1:1.4D Lens
 Original Format - A0 Landscape
 240m tip height, 150m hub height and 180m rotor.

This viewpoint has a horizontal view angle of around 60 degrees.
 This is a preliminary layout only and is subject to change as detailed planning proceeds.
 Closest visible turbine indicated by red line.

* The purpose of this Photomontage & Wireframe is to provide a 'representation' of the possible visual impact of this project for the purpose of discussion. The layout is subject to change in accordance with the planning process. These images give a reasonable impression of the scale of turbines and the distance to turbines, but due to vegetation screening and the complexity of working off useful landscape features, they cannot be 100% accurate. A static image cannot convey turbine movement, different lighting, weather and seasonal conditions that vary through time and resolution of image.