

**Legend**

- Project Boundary
- 20km ZVI extent
- Wind turbine
- Area where at least 1 turbine tip and 1 turbine hub will be visible
- Area where at least 1 turbine tip will be visible

**Notes:**

- ZVI assumes a tip height of 231m and a hub height of 150m.
- ZVI is based on a digital elevation model and does not account for any screening by vegetation.

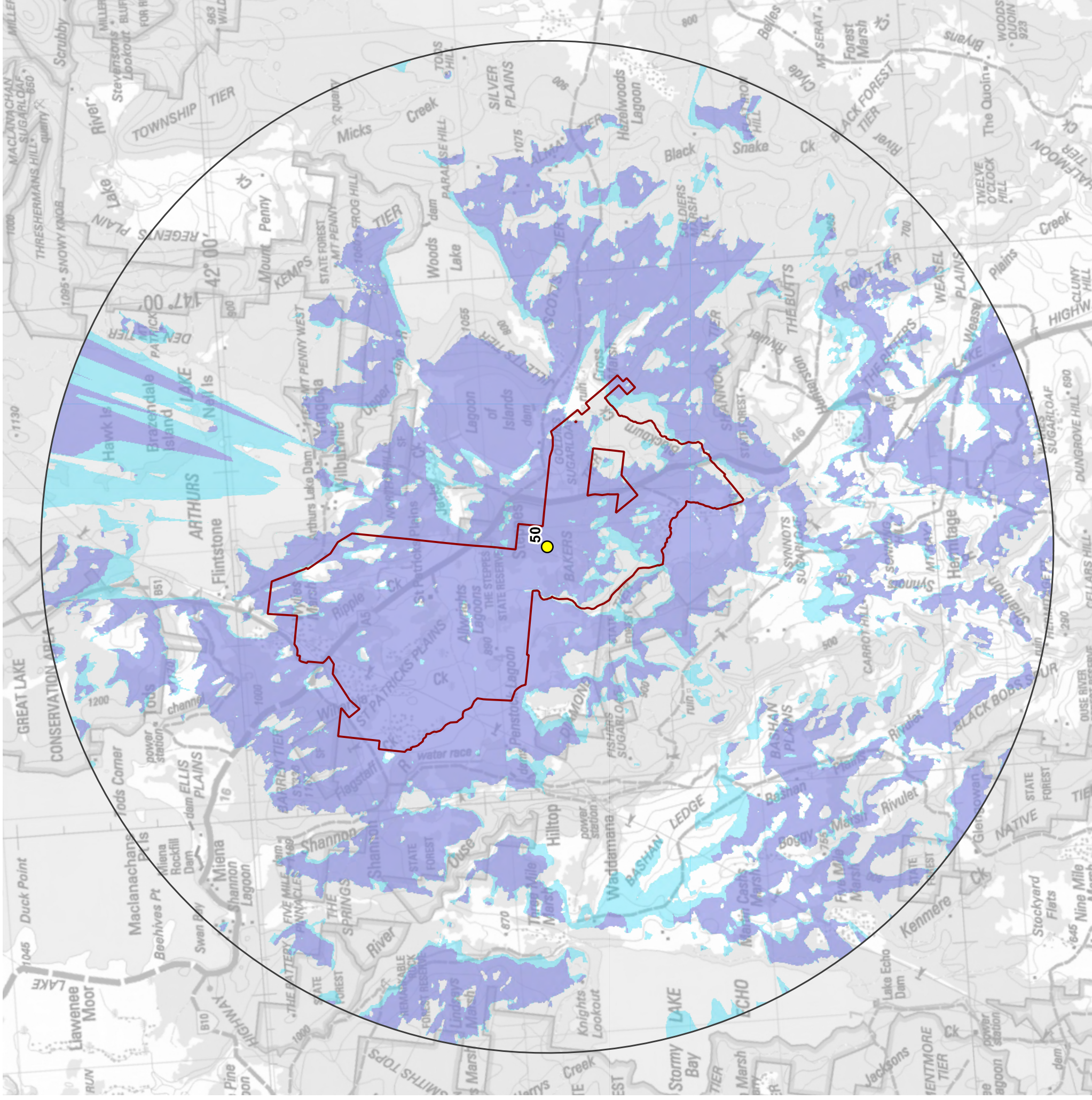
**Turbine 49 visibility within 20km**

**EPURÓN**

Date: 26/10/20



**St Patricks Plains Wind Farm**



**Legend**

- Project Boundary
- 20km ZVI extent
- Wind turbine
- Area where at least 1 turbine tip and 1 turbine hub will be visible
- Area where at least 1 turbine tip will be visible

**Notes:**

- ZVI assumes a tip height of 231m and a hub height of 150m.
- ZVI is based on a digital elevation model and does not account for any screening by vegetation.

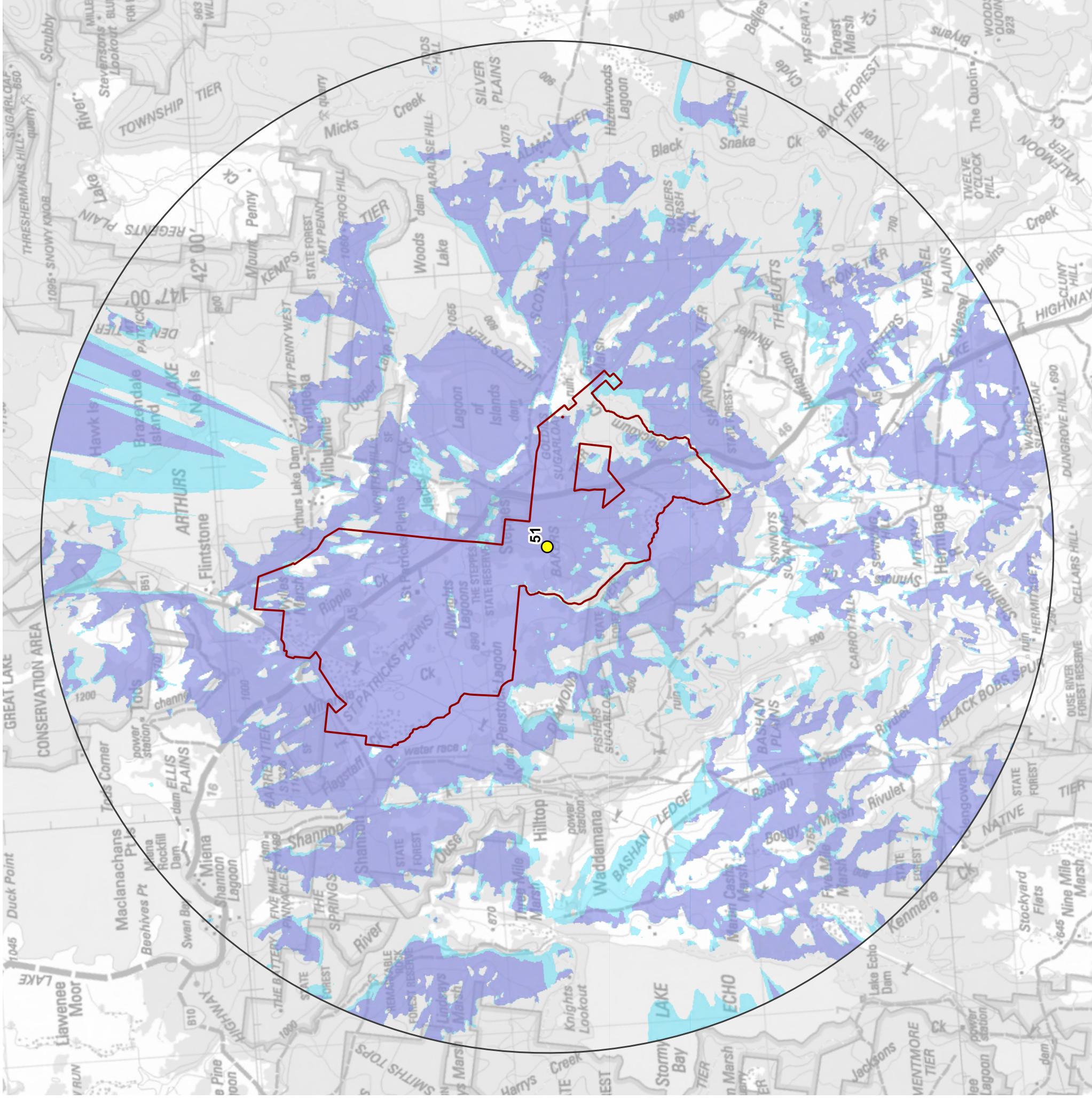
**Turbine 50 visibility within 20km**

**EPURÓN**

Date: 26/10/20



**St Patricks Plains Wind Farm**



**Legend**

- Project Boundary
- 20km ZVI extent
- Wind turbine
- Area where at least 1 turbine tip and 1 turbine hub will be visible
- Area where at least 1 turbine tip will be visible

**Notes:**

- ZVI assumes a tip height of 231m and a hub height of 150m.
- ZVI is based on a digital elevation model and does not account for any screening by vegetation.

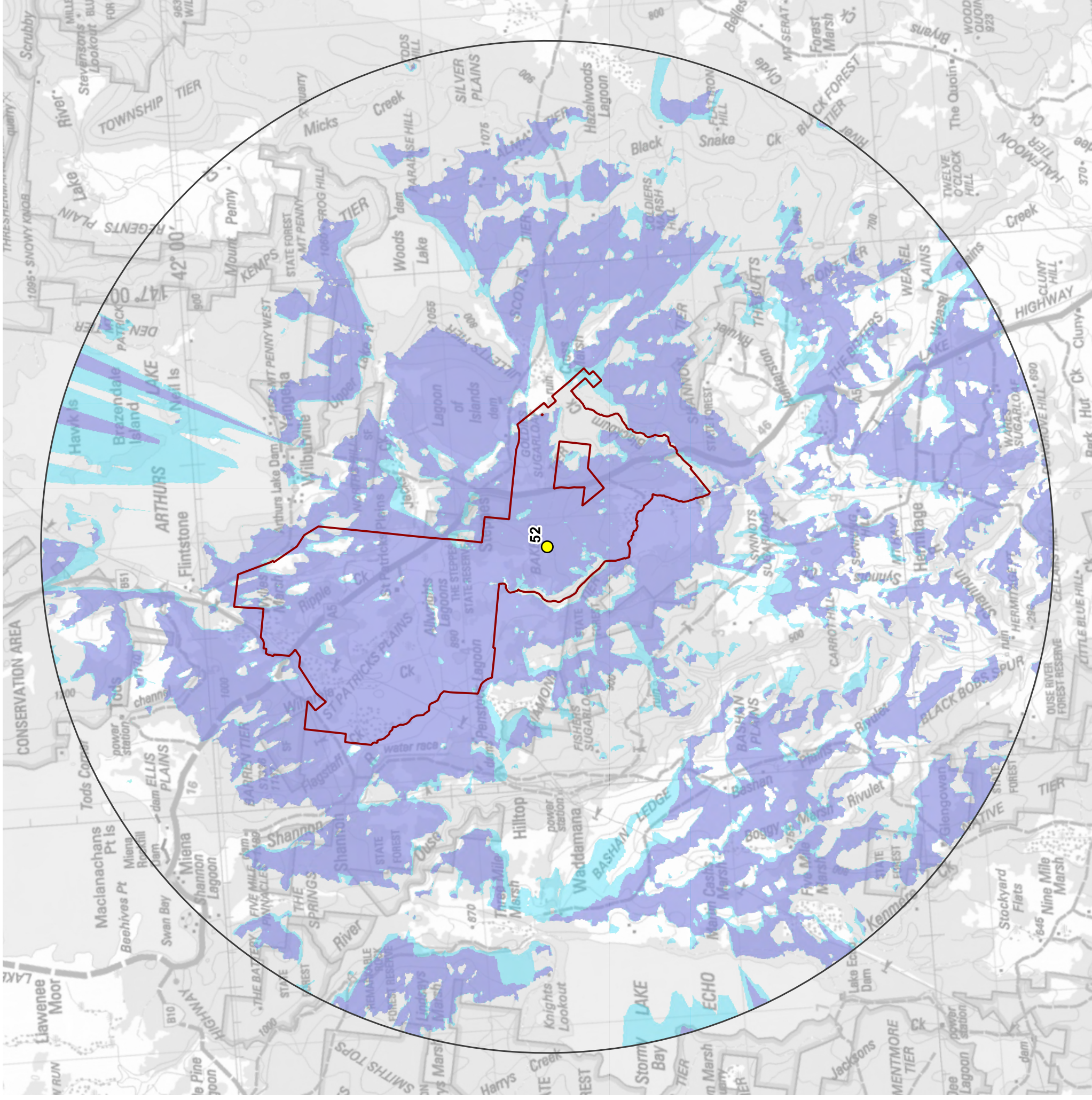
**Turbine 51 visibility within 20km**

**EPURÓN**

Date: 26/10/20



**St Patricks Plains Wind Farm**



**Legend**

- Project Boundary
- 20km ZVI extent
- Wind turbine
- Area where at least 1 turbine tip and 1 turbine hub will be visible
- Area where at least 1 turbine tip will be visible

**Notes:**

- ZVI assumes a tip height of 231m and a hub height of 150m.
- ZVI is based on a digital elevation model and does not account for any screening by vegetation.

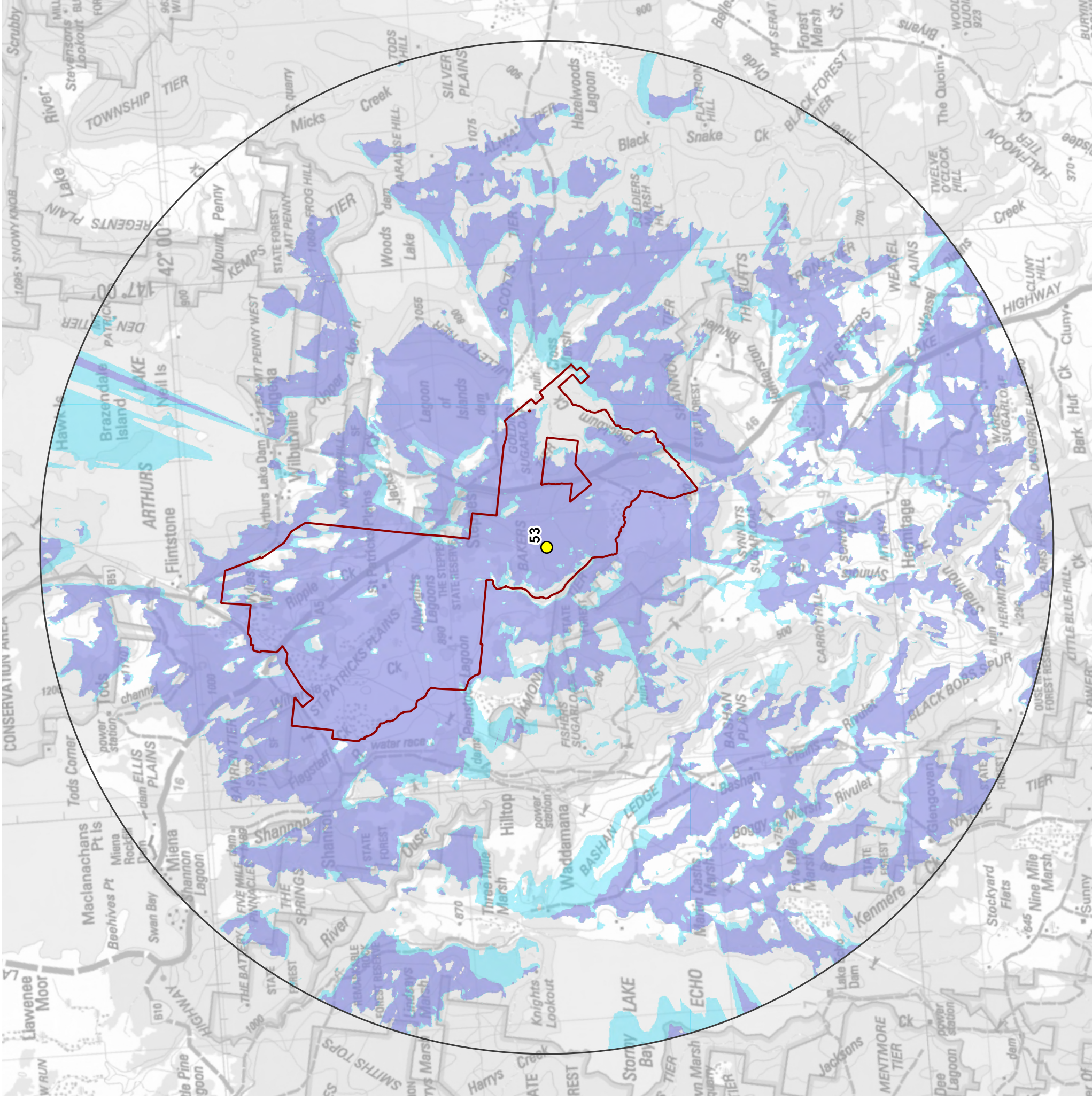
**Turbine 52 visibility within 20km**

**EPURÓN**

Date: 26/10/20



**St Patricks Plains Wind Farm**



**Legend**

- Project Boundary
- 20km ZVI extent
- Wind turbine
- Area where at least 1 turbine tip and 1 turbine hub will be visible
- Area where at least 1 turbine tip will be visible

**Notes:**

- ZVI assumes a tip height of 231m and a hub height of 150m.
- ZVI is based on a digital elevation model and does not account for any screening by vegetation.

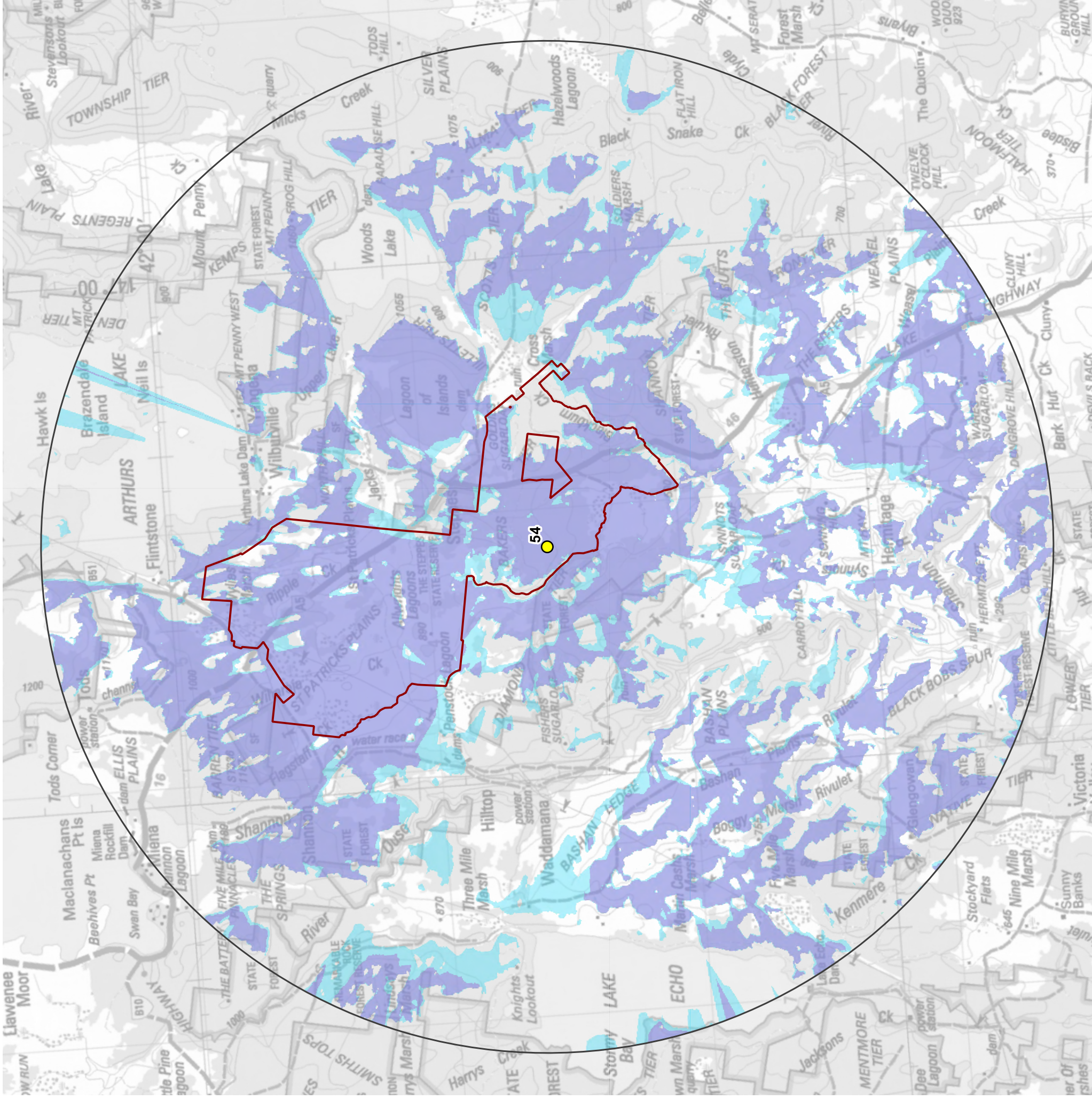
**Turbine 53 visibility within 20km**

**EPURÓN**

Date: 26/10/20



**St Patricks Plains Wind Farm**



**Legend**

- Project Boundary
- 20km ZVI extent
- Wind turbine
- Area where at least 1 turbine tip and 1 turbine hub will be visible
- Area where at least 1 turbine tip will be visible

**Notes:**

- ZVI assumes a tip height of 231m and a hub height of 150m.
- ZVI is based on a digital elevation model and does not account for any screening by vegetation.

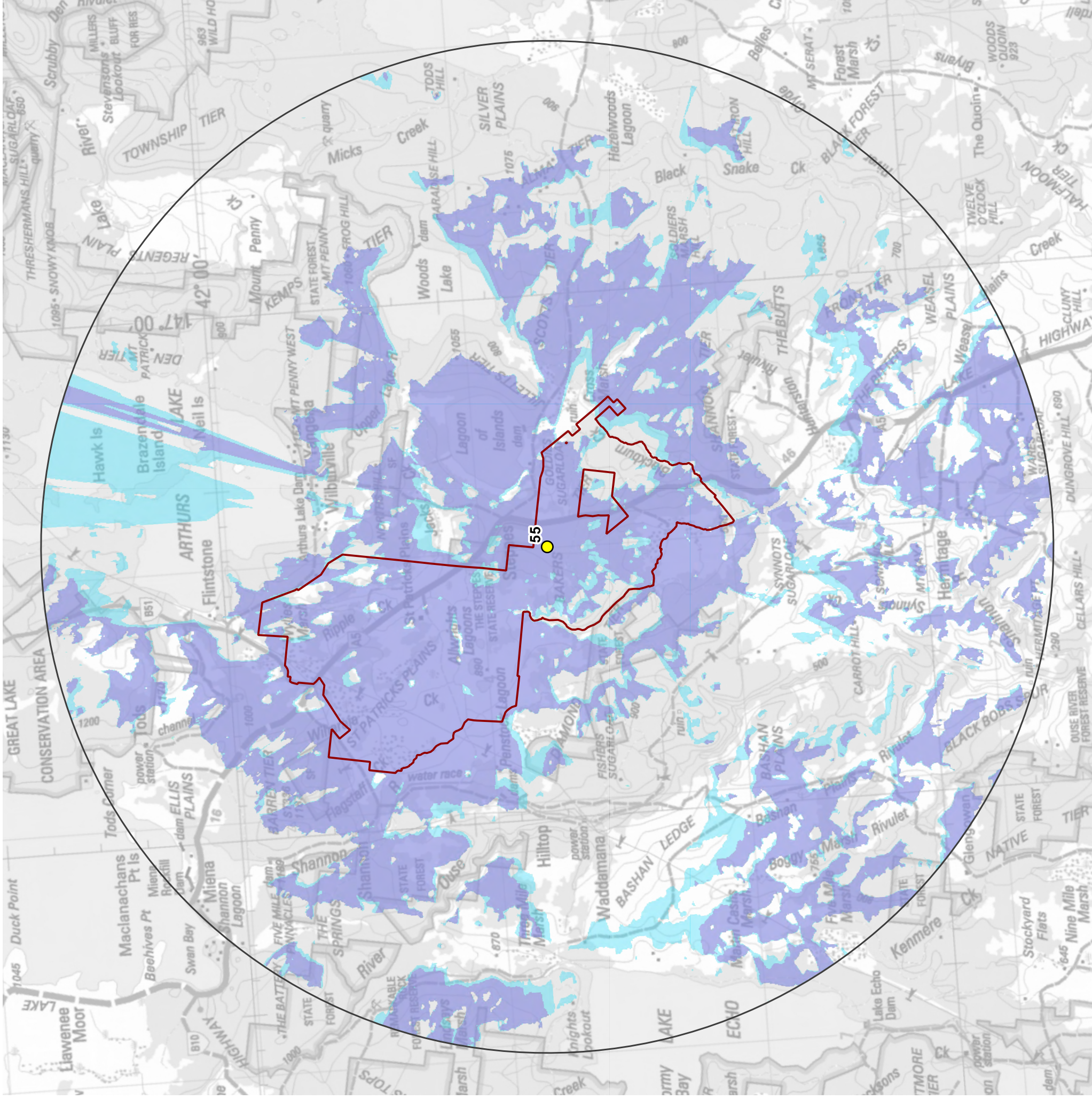
**Turbine 54 visibility within 20km**

**EPURÓN**

Date: 26/10/20



**St Patricks Plains Wind Farm**



**Legend**

- Project Boundary
- 20km ZVI extent
- Wind turbine
- Area where at least 1 turbine tip and 1 turbine hub will be visible
- Area where at least 1 turbine tip will be visible

**Notes:**

- ZVI assumes a tip height of 231m and a hub height of 150m.
- ZVI is based on a digital elevation model and does not account for any screening by vegetation.

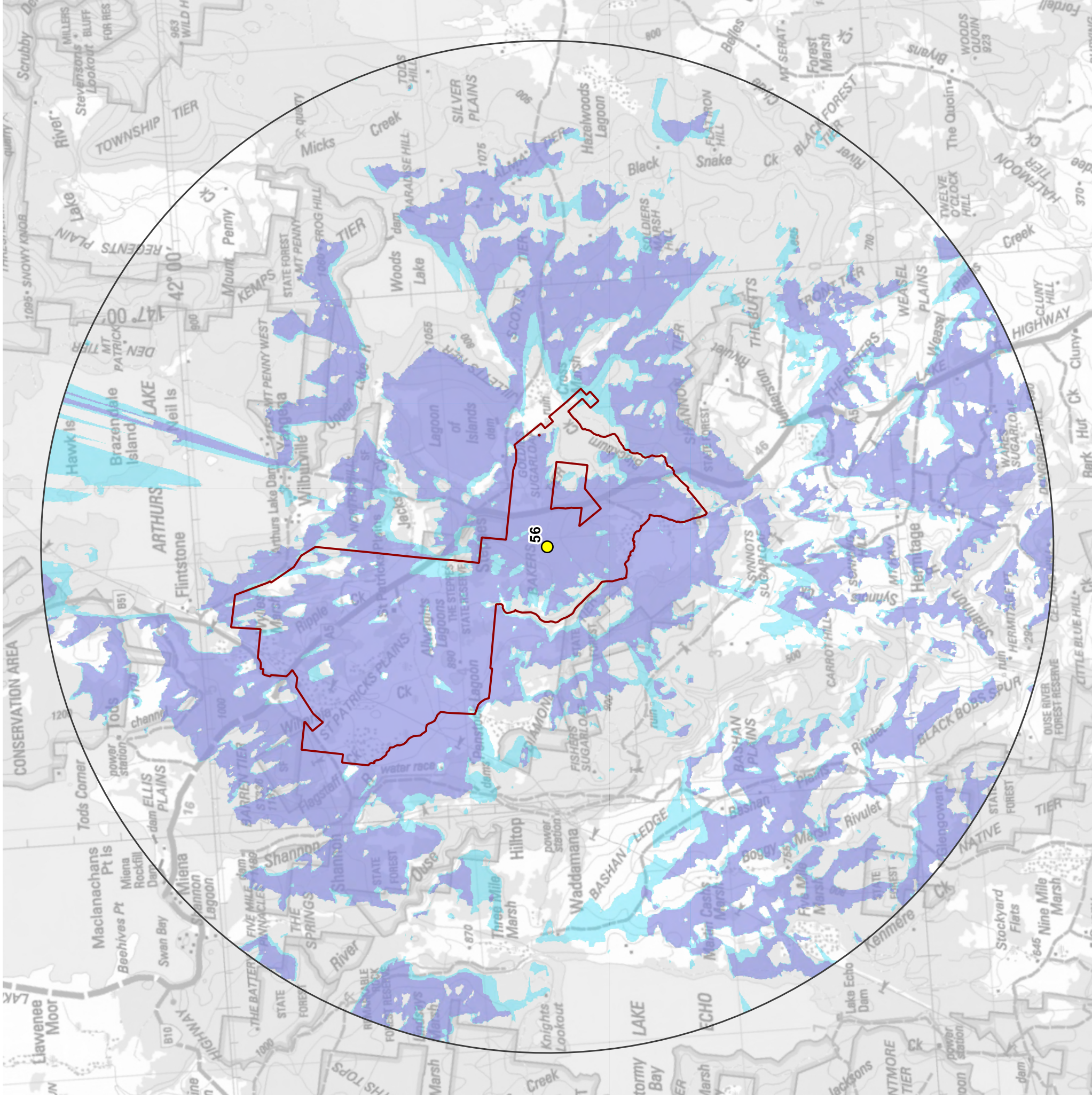
**Turbine 55 visibility within 20km**

**EPURÓN**

Date: 26/10/20



**St Patricks Plains Wind Farm**



**Legend**

- Project Boundary
- 20km ZVI extent
- Wind turbine
- Area where at least 1 turbine tip and 1 turbine hub will be visible
- Area where at least 1 turbine tip will be visible

**Notes:**

- ZVI assumes a tip height of 231m and a hub height of 150m.
- ZVI is based on a digital elevation model and does not account for any screening by vegetation.

**Turbine 56 visibility within 20km**

**EPURÓN**

Date: 26/10/20



**St Patricks Plains Wind Farm**