

Legend

- Project Boundary
- 20km ZVI extent
- Wind turbine
- Area where at least 1 turbine tip and 1 turbine hub will be visible
- Area where at least 1 turbine tip will be visible

Notes:

- ZVI assumes a tip height of 231m and a hub height of 150m.
- ZVI is based on a digital elevation model and does not account for any screening by vegetation.

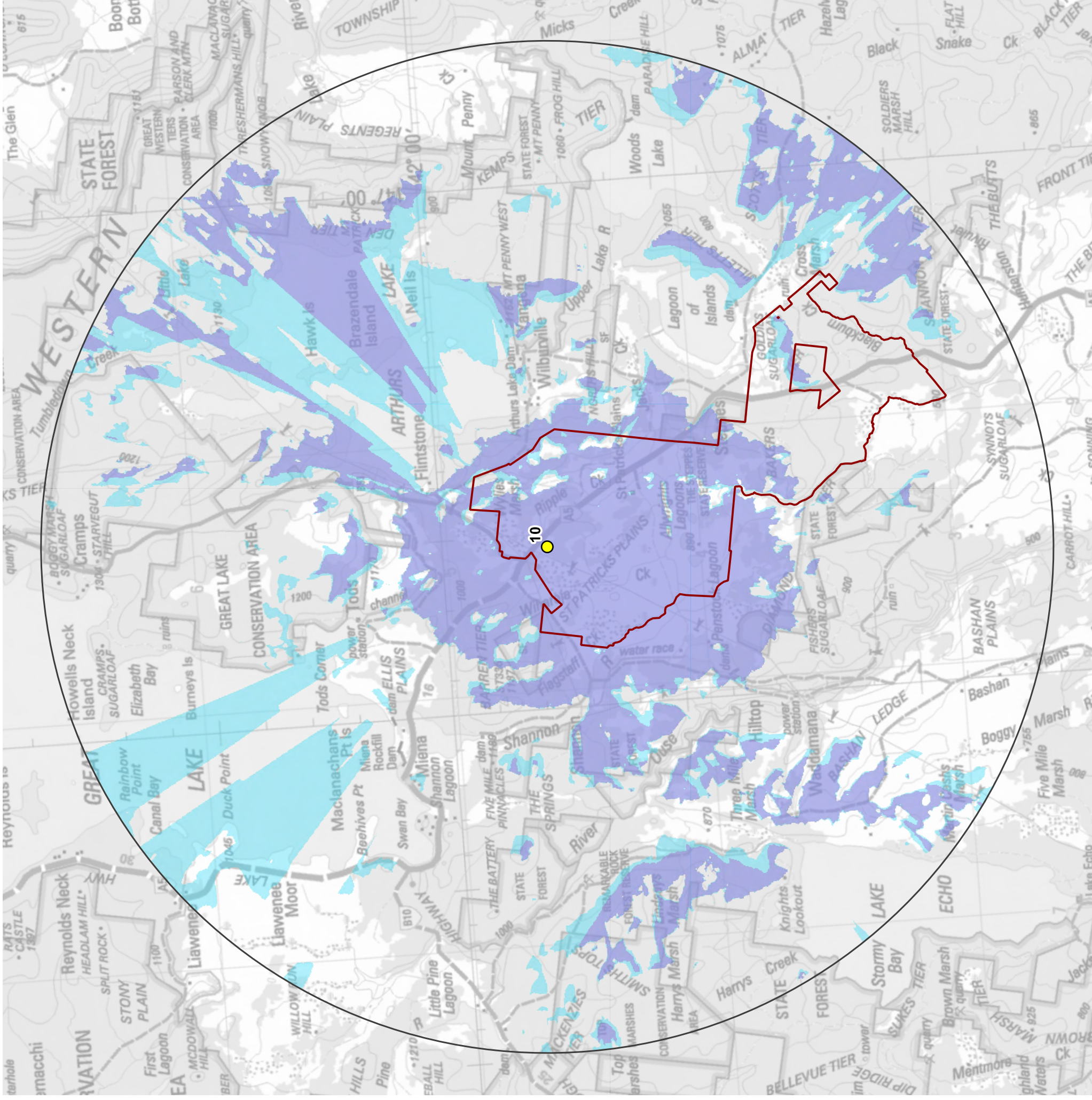
Turbine 9 visibility within 20km

EPURÓN

Date: 26/10/20



St Patricks Plains Wind Farm



Legend

- Project Boundary
- 20km ZVI extent
- Wind turbine
- Area where at least 1 turbine tip and 1 turbine hub will be visible
- Area where at least 1 turbine tip will be visible

Notes:

- ZVI assumes a tip height of 231m and a hub height of 150m.
- ZVI is based on a digital elevation model and does not account for any screening by vegetation.

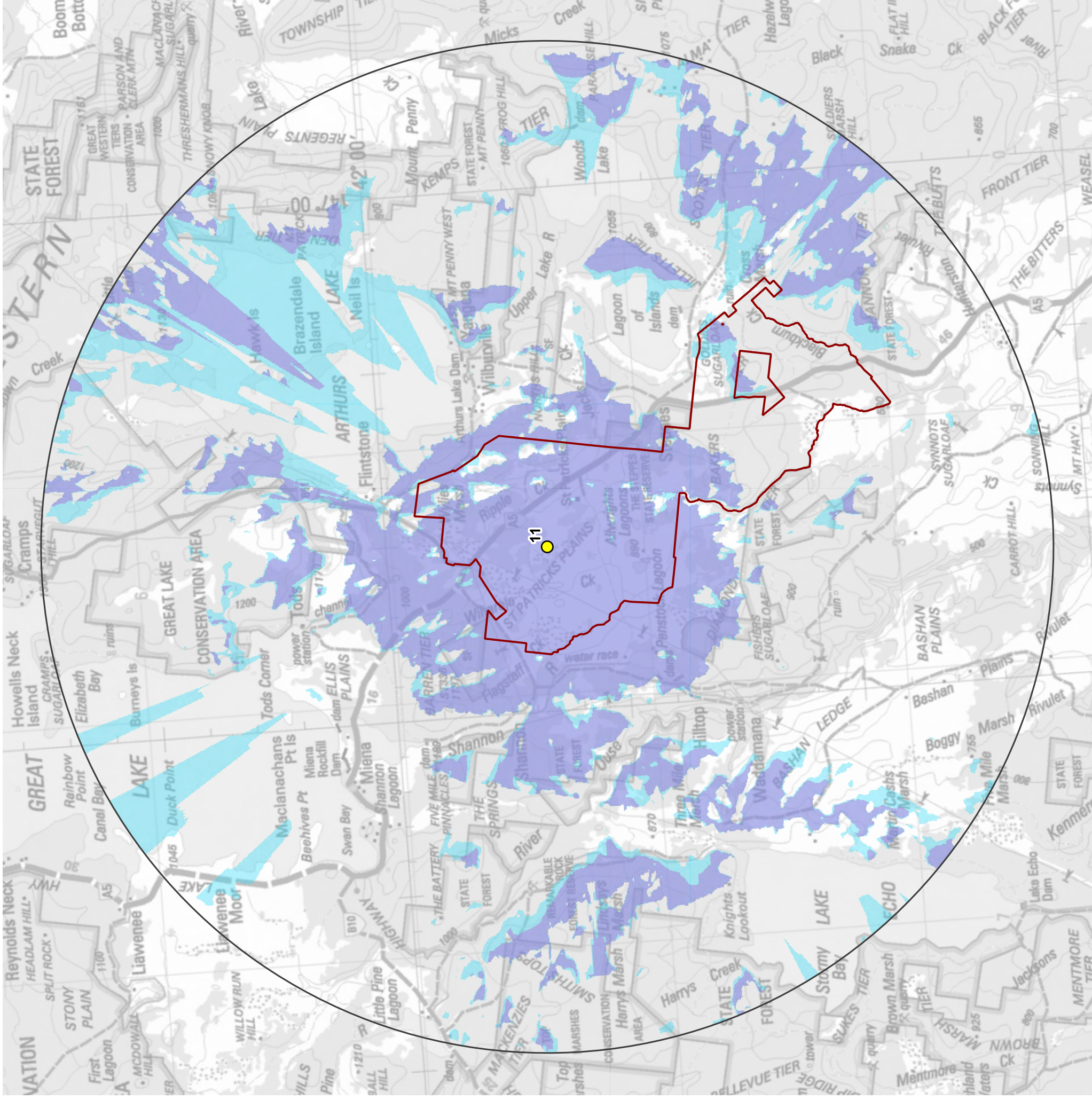
Turbine 10 visibility within 20km

EPURÓN

Date: 26/10/20



St Patricks Plains Wind Farm



Legend

- Project Boundary
- 20km ZVI extent
- Wind turbine
- Area where at least 1 turbine tip and 1 turbine hub will be visible
- Area where at least 1 turbine tip will be visible

Notes:

- ZVI assumes a tip height of 231m and a hub height of 150m.
- ZVI is based on a digital elevation model and does not account for any screening by vegetation.

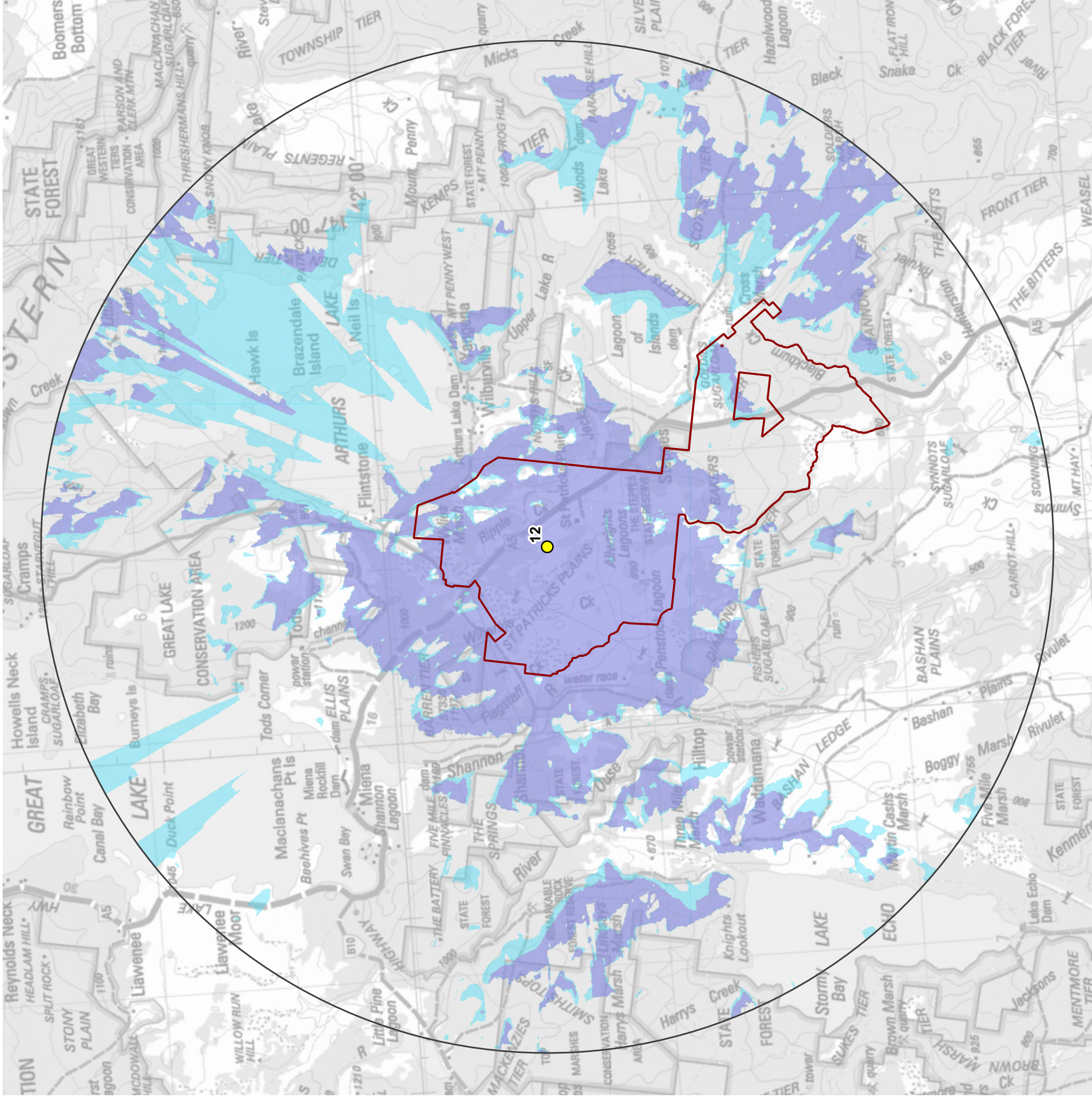
Turbine 11 visibility within 20km

EPURÓN

Date: 26/10/20



St Patricks Plains Wind Farm



Legend

- Project Boundary
- 20km ZVI extent
- Wind turbine
- Area where at least 1 turbine tip and 1 turbine hub will be visible
- Area where at least 1 turbine tip will be visible

Notes:

- ZVI assumes a tip height of 231m and a hub height of 150m.
- ZVI is based on a digital elevation model and does not account for any screening by vegetation.

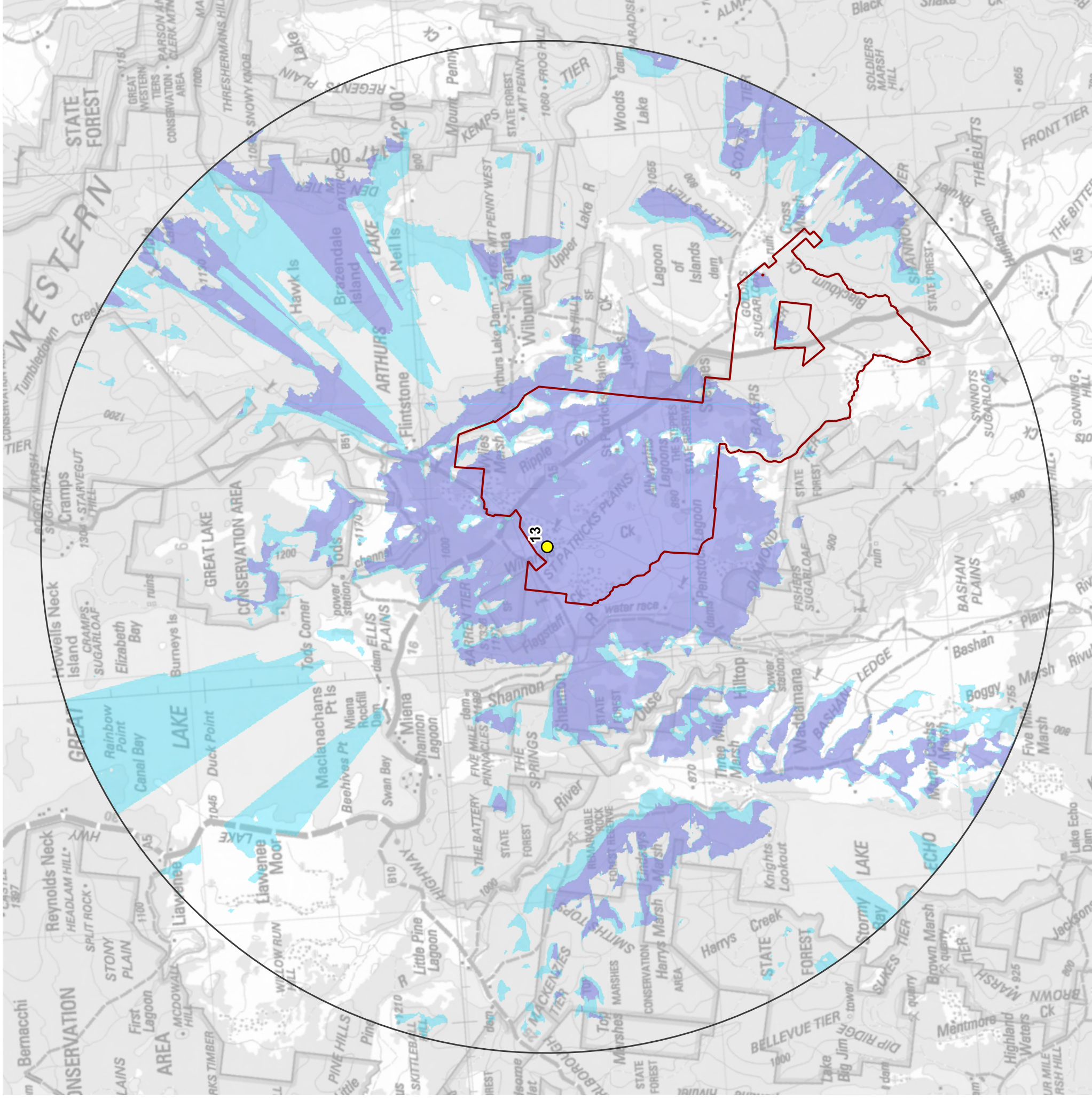
Turbine 12 visibility within 20km

EPURÓN

Date: 26/10/20



St Patricks Plains Wind Farm



Legend

- Project Boundary
- 20km ZVI extent
- Wind turbine
- Area where at least 1 turbine tip and 1 turbine hub will be visible
- Area where at least 1 turbine tip will be visible

Notes:

- ZVI assumes a tip height of 231m and a hub height of 150m.
- ZVI is based on a digital elevation model and does not account for any screening by vegetation.

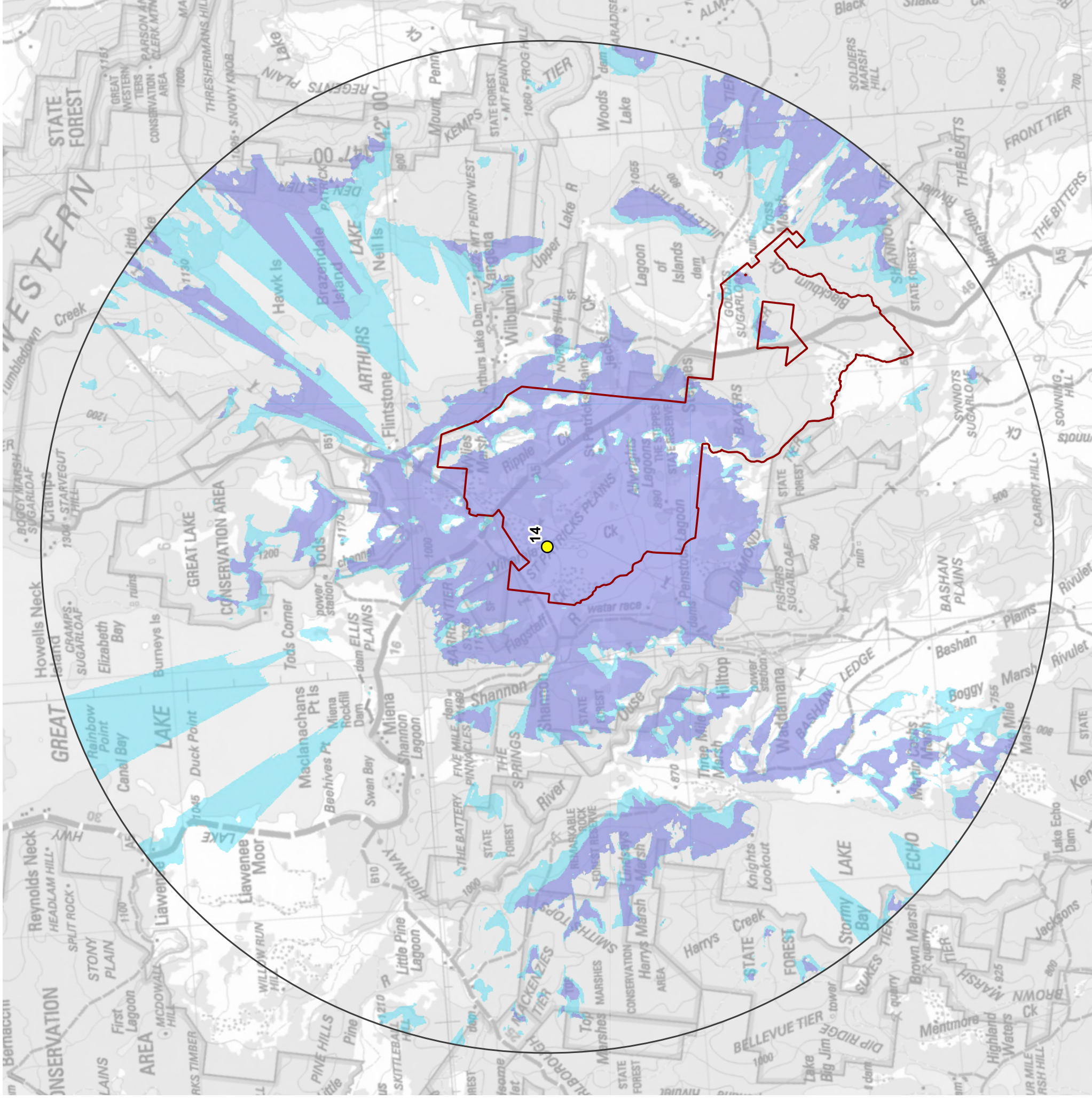
Turbine 13 visibility within 20km

EPURÓN

Date: 26/10/20



St Patricks Plains Wind Farm



Legend

- Project Boundary
- 20km ZVI extent
- Wind turbine
- Area where at least 1 turbine tip and 1 turbine hub will be visible
- Area where at least 1 turbine tip will be visible

Notes:

- ZVI assumes a tip height of 231m and a hub height of 150m.
- ZVI is based on a digital elevation model and does not account for any screening by vegetation.

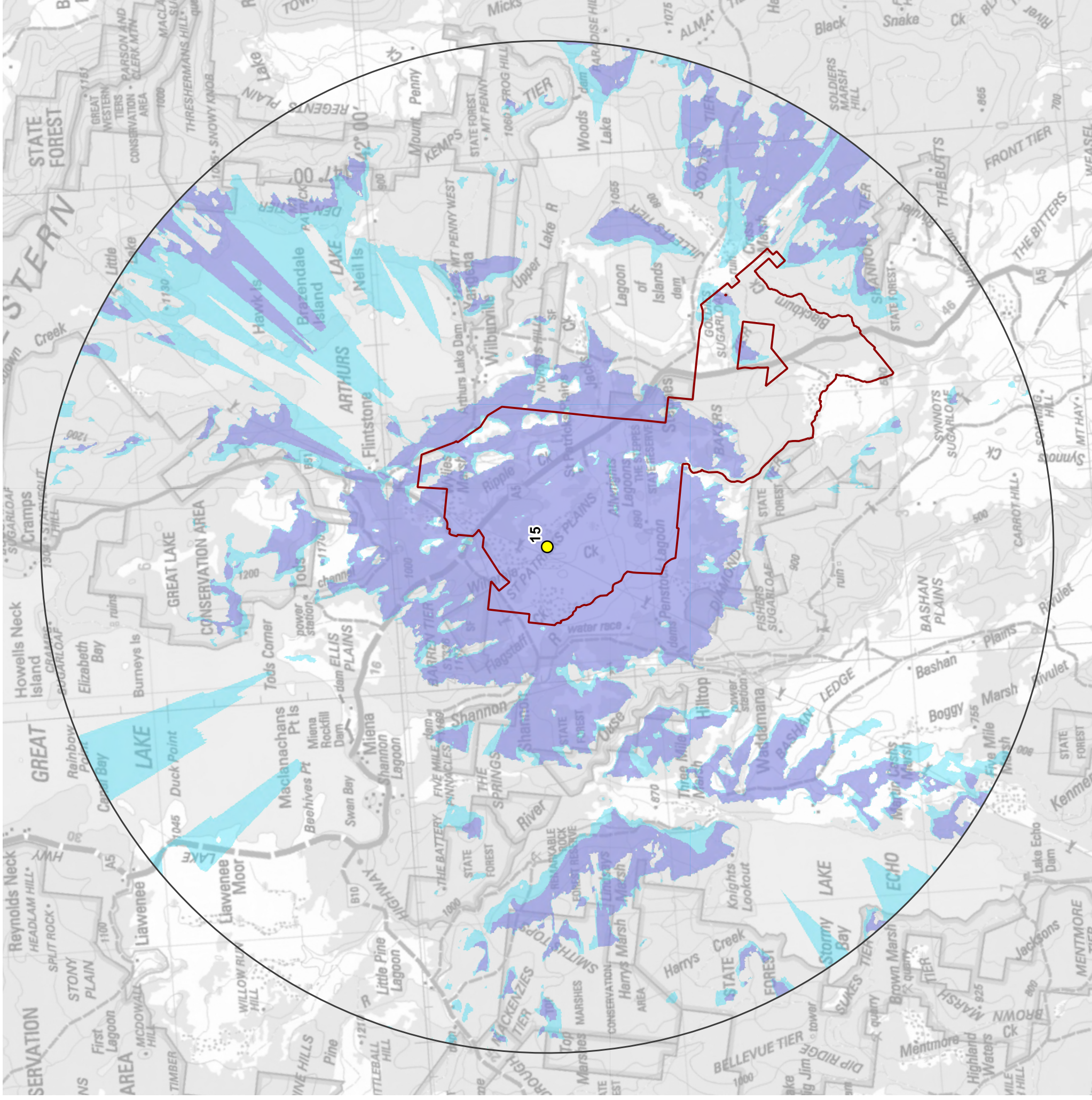
Turbine 14 visibility within 20km

EPURÓN

Date: 26/10/20



St Patricks Plains Wind Farm



Legend

- Project Boundary
- 20km ZVI extent
- Wind turbine
- Area where at least 1 turbine tip and 1 turbine hub will be visible
- Area where at least 1 turbine tip will be visible

Notes:

- ZVI assumes a tip height of 231m and a hub height of 150m.
- ZVI is based on a digital elevation model and does not account for any screening by vegetation.

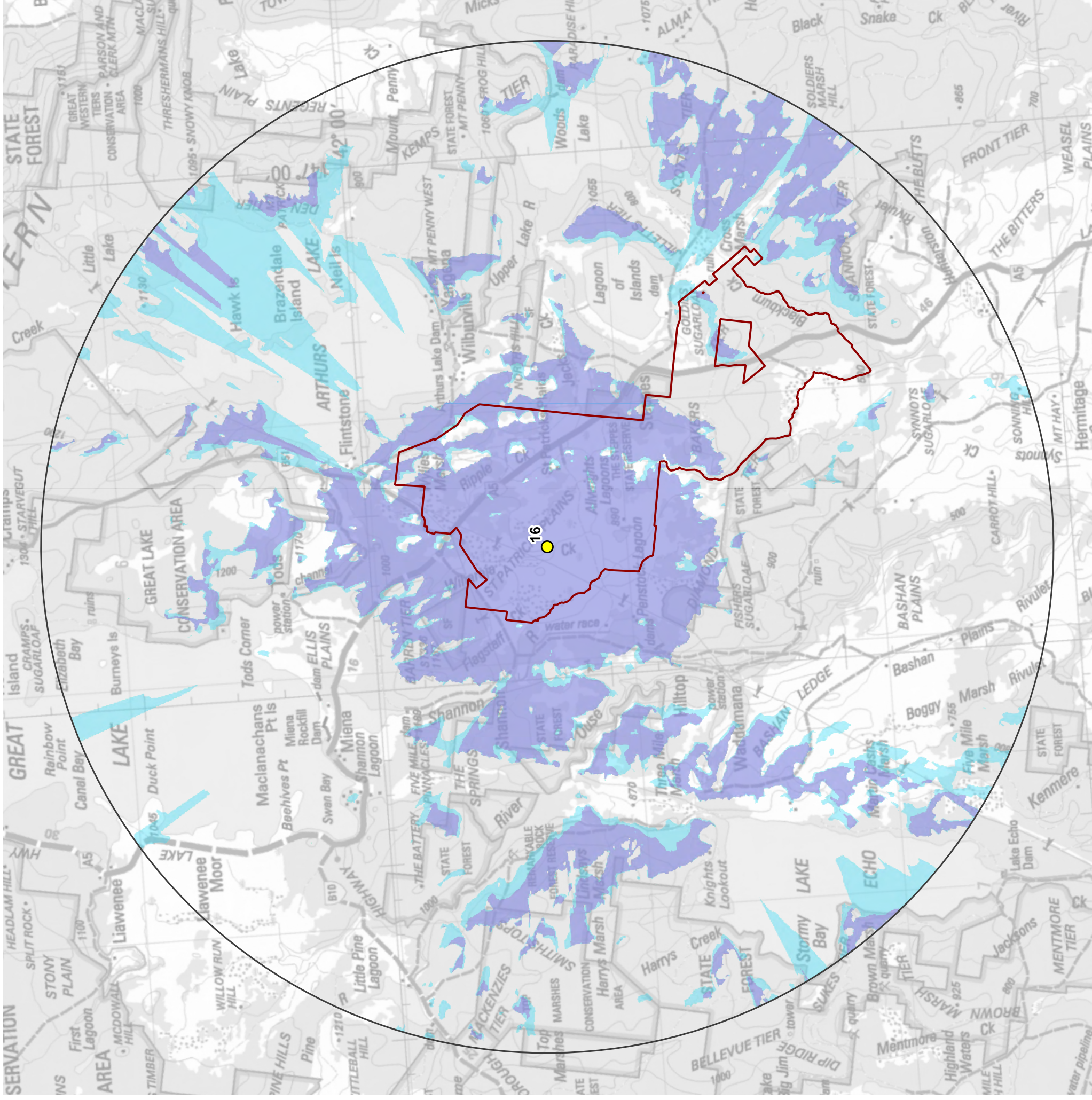
Turbine 15 visibility within 20km

EPURÓN

Date: 26/10/20



St Patricks Plains Wind Farm



Legend

- Project Boundary
- 20km ZVI extent
- Wind turbine
- Area where at least 1 turbine tip and 1 turbine hub will be visible
- Area where at least 1 turbine tip will be visible

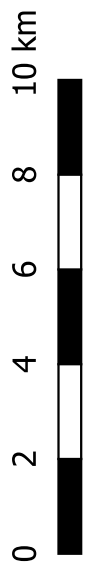
Notes:

- ZVI assumes a tip height of 231m and a hub height of 150m.
- ZVI is based on a digital elevation model and does not account for any screening by vegetation.

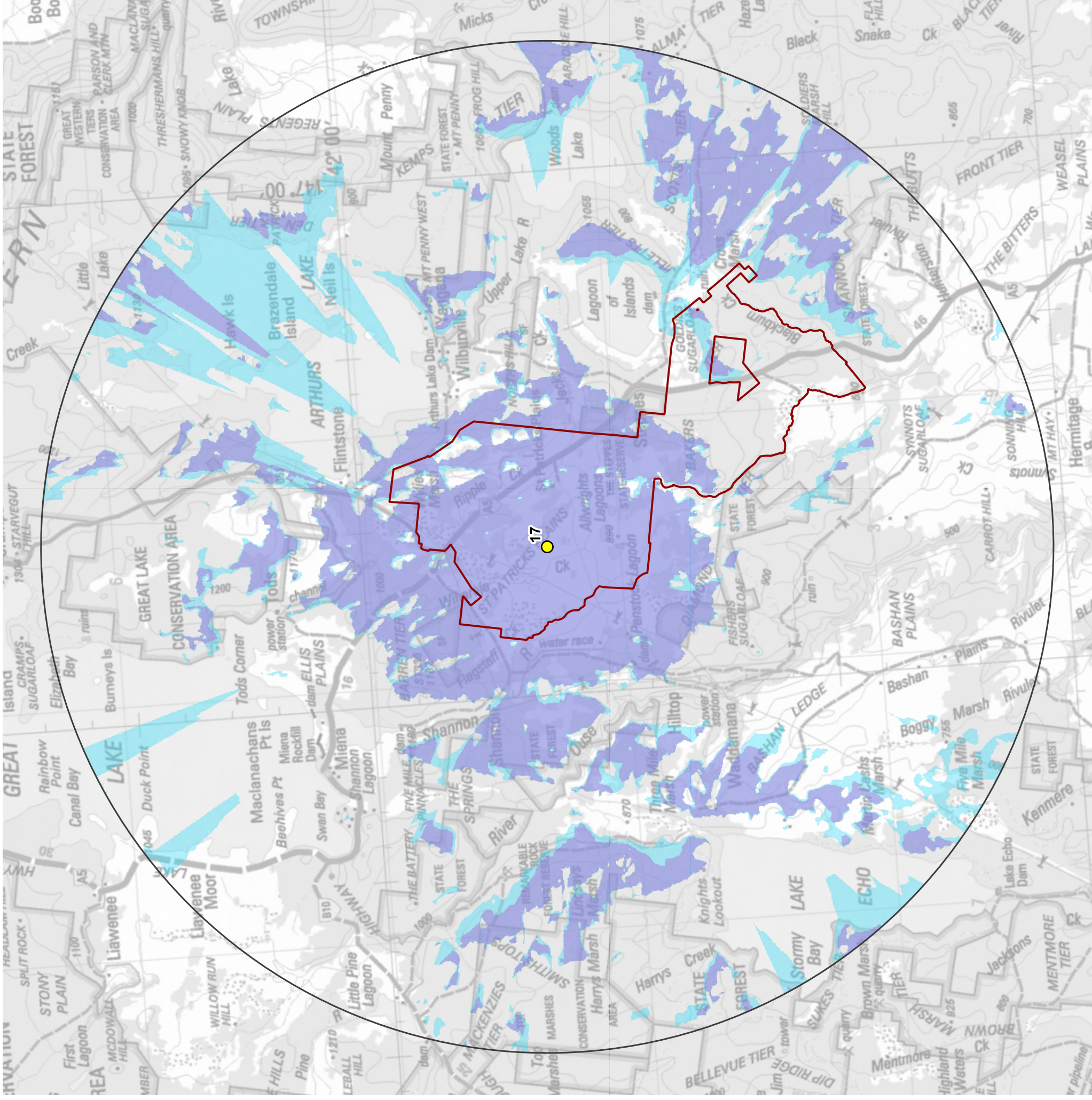
Turbine 16 visibility within 20km

EPURÓN

Date: 26/10/20



St Patricks Plains Wind Farm



Legend

- Project Boundary
- 20km ZVI extent
- Wind turbine
- Area where at least 1 turbine tip and 1 turbine hub will be visible
- Area where at least 1 turbine tip will be visible

Notes:

- ZVI assumes a tip height of 231m and a hub height of 150m.
- ZVI is based on a digital elevation model and does not account for any screening by vegetation.

Turbine 17 visibility within 20km

EPURÓN

Date: 26/10/20



St Patricks Plains Wind Farm