

# St Patricks Plains Wind Farm



Photomontage showing what St Patricks Plains Wind Farm would look like from Highland Lakes Road near Steppes Hall.

## Development Application lodged

The Development Application (DA) and Environmental Impact Statement (EIS) for St Patricks Plains Wind Farm have been lodged with Central Highlands Council.

When advertised by Council the project documents will go on public exhibition for a period of six weeks. When Ark Energy is advised of the dates for the exhibition period they will be posted on the project website and a project update with the details will be sent to everyone who is registered to receive updates.

The public exhibition period will provide the opportunity for neighbours, community members and other stakeholders to review the full details of the project.

The planning report addressing planning matters and the EIS addressing Environment Protection Authority Tasmania (EPA) matters will be available to read on the EPA website, the Central Highlands Council website and the project website. A printed version of the documents will be available to read at the Council offices in Bothwell and at the St Patricks Plains Wind Farm information centre in Bothwell.

The project information centre, currently open on Fridays, will also be open on Saturdays from 10am to 4pm during the exhibition. Shop opening times will be posted on the website and in the next newsletter. An Ark Energy project summary will also be available on the project website.

## Environmental Impact Statement

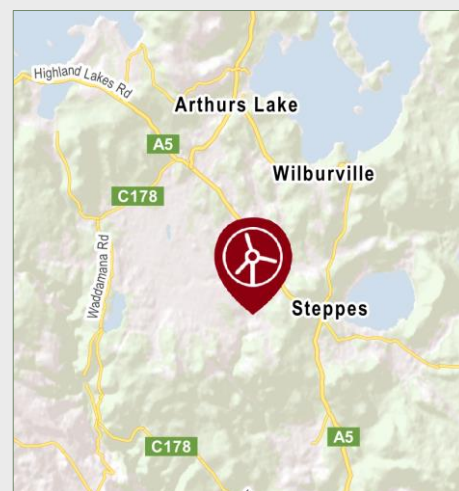
The EIS responds to the Project Specific Guidelines issued for the St Patricks Plains Wind Farm by the EPA. The EIS describes the project, its potential for impacts and outlines how these have been avoided, minimised and mitigated, and how residual impacts would be managed. It provides technical and specialist reports on avifauna, flora and terrestrial fauna, noise, socio-economic impacts, traffic, visual impacts, shadow flicker, and hydrogeology.

## Wind resource confirmed



Along with the monitoring masts, SODARs (see image left) have been located across the site to monitor the wind resource. These devices have confirmed a strong and consistent wind resource. In combination with excellent grid connection, private freehold land, and only a small number of neighbouring properties, this makes the location ideal for a wind farm.

## Location



The site for St Patricks Plains Wind Farm is about 10 km south-east of Miena and 25 km north of Bothwell in the Central Highlands.

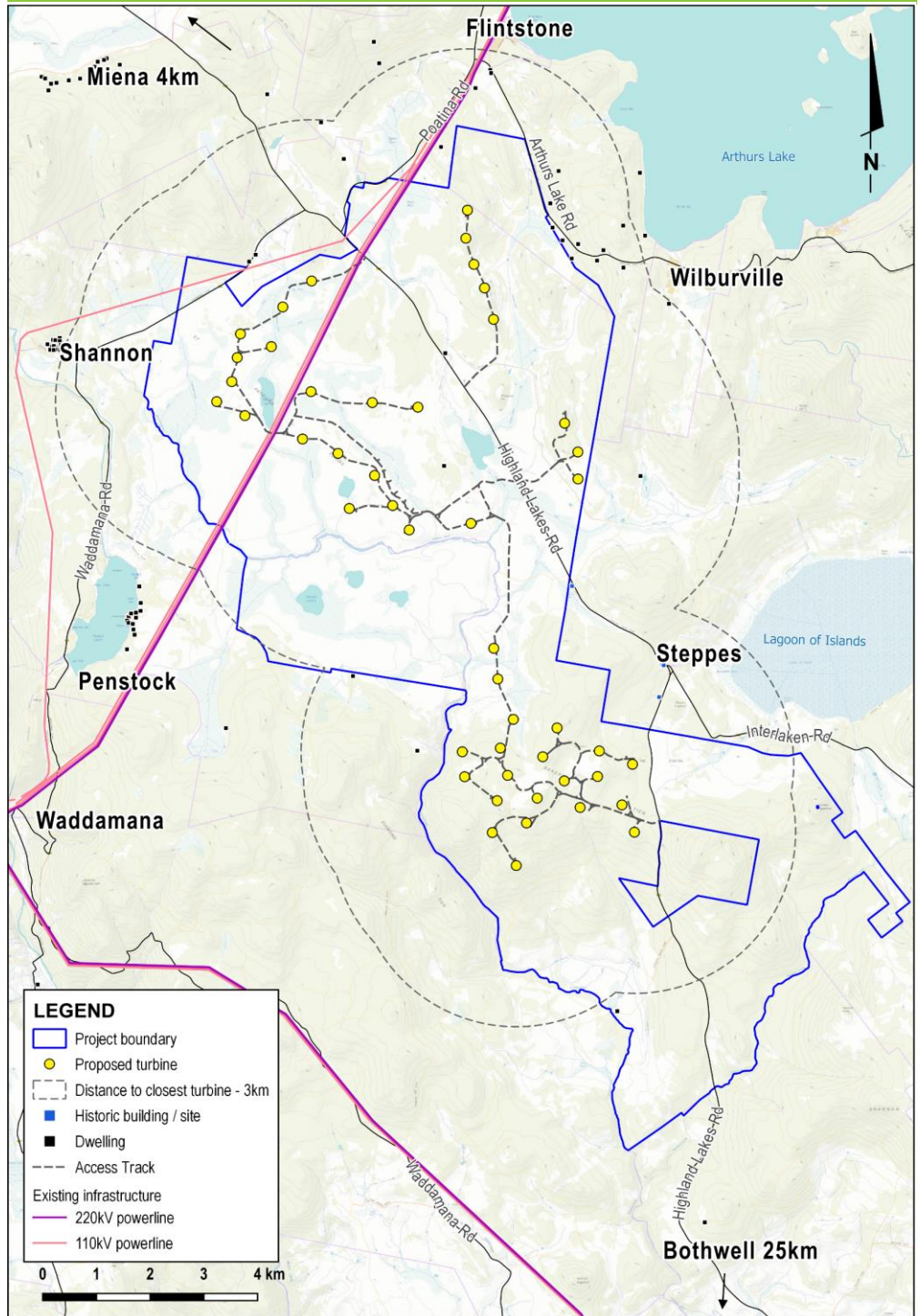
### Key project information:

- 47 wind turbines.
- Wind turbine tip height of 231m.
- Up to 300 megawatts of clean, renewable energy.
- Up to 200 jobs during construction.
- Up to 20 full-time jobs during operation.
- Construction period of 24 months.
- Community Benefit Fund for the life of the wind farm.

## Planning & assessment

The Development Application will be determined by Central Highlands Council and the Environmental Impact Statement (EIS) will be assessed by the Environment Protection Authority Tasmania (EPA).

## St Patricks Plains Wind Farm site map - 47 wind turbines



1 Site selection and preliminary investigations ✓

2 Referral to the Australian Department of Climate Change, Energy, the Environment and Water (DCCEEW) for review under the Commonwealth *Environment Protection and Biodiversity Conservation Act 1999* (EPBC Act).  
\* Determined a Controlled Action with assessment under bilateral agreement (Ref 2019/8497). ✓

3 Notice of Intent lodged with the EPA ✓

4 Project Specific Guidelines for the EIS issued by the EPA ✓

5 Studies, assessments, site design ✓

6 Preparing EIS for lodgment ✓

7 Development Application (DA) and EIS submitted to Central Highlands Council **WE ARE HERE**

8 EIS referred by Council to the EPA

9 EIS on exhibition for public comment

10 Responses to submissions and requests for additional information (if required)

11 Assessment by the EPA

12 EPA approval conditions provided to Council

13 Assessment by Council

14 Determination by Council

15 Determination by DCCEEW

### Have your say

When the Project documents are on exhibition members of the public will have the opportunity to make a submission about any concerns or in support of the project. Please check the website during exhibition for details on how to make a submission.

### More information

Visit - St Patricks Plains Wind Farm Information Centre, 16a Patrick Street, Bothwell. 10am-4pm Fridays (also Saturdays during EIS exhibition period only) - please check the website.

Tel - 1800 731 296.

Email - [info@stpatricksplainswindfarm.com.au](mailto:info@stpatricksplainswindfarm.com.au)

Register for updates - [arkenergy.com.au/mailling-list-details](http://arkenergy.com.au/mailling-list-details)

Website - [stpatricksplainswindfarm.com.au](http://stpatricksplainswindfarm.com.au) or scan QR code



Scan QR CODE to visit the website