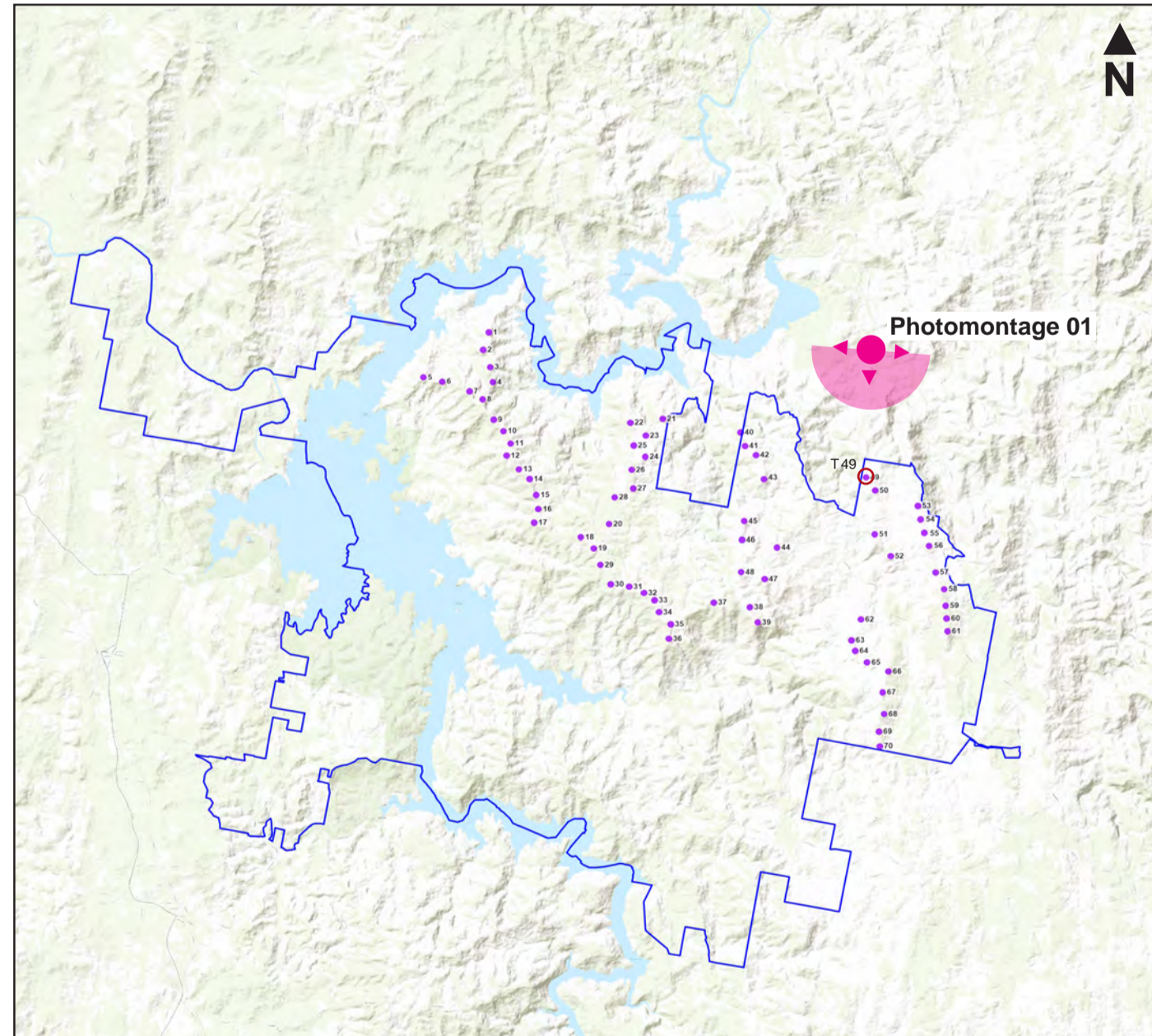


Burrendong Wind Farm - Photomontage 01

75° FOV Generally south view from intersection of Burrendong Dam Rd and Yarrabin Rd - viewpoint bwf09 (165m hub, 170m rotor - 250 tip height)



Aerial: viewpoint location and direction shown as a pink marker.



Site Map: viewpoint location and direction shown as a pink marker

Viewpoint information

- Horizontal field of view:** 75°
- Bearing to closest turbine:** 186° (49)
- Distance to closest turbine (m):** 4290m
- Bearing to closest visible turbine:** 186° (49)
- Elevation:** 377m
- Photo Taken:** 7:52am on 4th of March 2021
- Camera:** Canon EOS 5DS R, 50mm Prime Lens
- Photo Coordinates:** 32°37'31.08"S 149°19'36.36"E
- Projection:** MGA Zone 55 (GDA 94)
- Original Format:** A1 Landscape

* Photomontage and wireframe provide a 'representation' of the projects visibility for the purpose of discussion. The layout as shown may be subject to change in accordance with the planning process. The images provide a reasonable impression of wind turbine scale and distance to turbines; however, cannot be 100% accurate. A static image cannot convey wind turbine blade movement, different lighting, weather and seasonal conditions that vary through time.