

Burrendong Wind Farm



Photomontage of what the wind farm would look like from Wallawaugh Rd, Hargraves, approximately 2 km away.

New project owner

In May 2022 Ark Energy completed its friendly acquisition of Epuron, the proponent for the Burrendong Wind Farm, and in October 2022 the Epuron name was retired. Ark Energy is an Australian subsidiary of Korea Zinc, the first major refiner to join RE100 and commit to powering its global operations from 100% clean energy by 2050.

There are no changes to plans for the project as a result of the change in ownership.

Project update

In September 2022 Ark Energy lodged a revised Scoping Report with the NSW Department of Planning and Environment (DPE) and DPE issued updated Secretary's Environmental Assessment Requirements (SEARs) for the project's Environmental Impact Statement (EIS). The project's Scoping Report and SEARs are available on the Burrendong Wind Farm page in the NSW Government's Major Projects Planning Portal (SSD-8950984):

planningportal.nsw.gov.au/major-projects/projects/burrendong-wind-farm

The updated proposal was also referred to the Australian Department of Climate Change, Energy, the Environment and Water (DCCEEW) for review and determined a controlled action that will require approval under the Commonwealth *Environment Protection and Biodiversity Conservation Act 1999* (EPBC Act). The project's EPBC documentation is available from the project's page in the EPBC Act Public Portal (Ref 2022/09268): epbcpublicportal.awe.gov.au. This assessment will also be done by the DPE under the bilateral agreement between the NSW and Commonwealth Governments.

Over the past year work for the various technical assessment reports required for the EIS has progressed and as findings have become available the design has been modified accordingly. The current design involves 70 wind turbines – please see overleaf for the layout. More details will be shared at the community information session – details below.

Community information session – Thursday, 29 June

Interested local residents and community members are invited to attend a Burrendong Wind Farm information session in Mudgee later this month. It will provide an opportunity to ask questions and discuss the proposal in detail with members of the project team.

Time: 4-6pm, Thursday 29 June 2023

Location: Conference Room, The Horatio, 15 Horatio St, Mudgee

Everyone is welcome. Refreshments will be provided. To assist with catering please RSVP to info@burrendongwindfarm.com.au by Monday 26 June.

The project team looks forward to meeting attendees and the opportunity to address any concerns and discuss the project in more detail.

Location



The project area is east of Lake Burrendong, within the Dubbo Regional Council and Mid-Western Regional Council areas, in the Central West region of New South Wales.

It has an excellent wind resource and is within the Central West-Orana Renewable Energy Zone, an area that has identified by the Australian Energy Market Operator and NSW Government as optimal for new renewable energy projects due to the natural resources and proximity to existing or planned network infrastructure.

New renewable energy projects are required to help the NSW Government meet its targets to halve emissions by 2030 and achieve net zero by 2050.

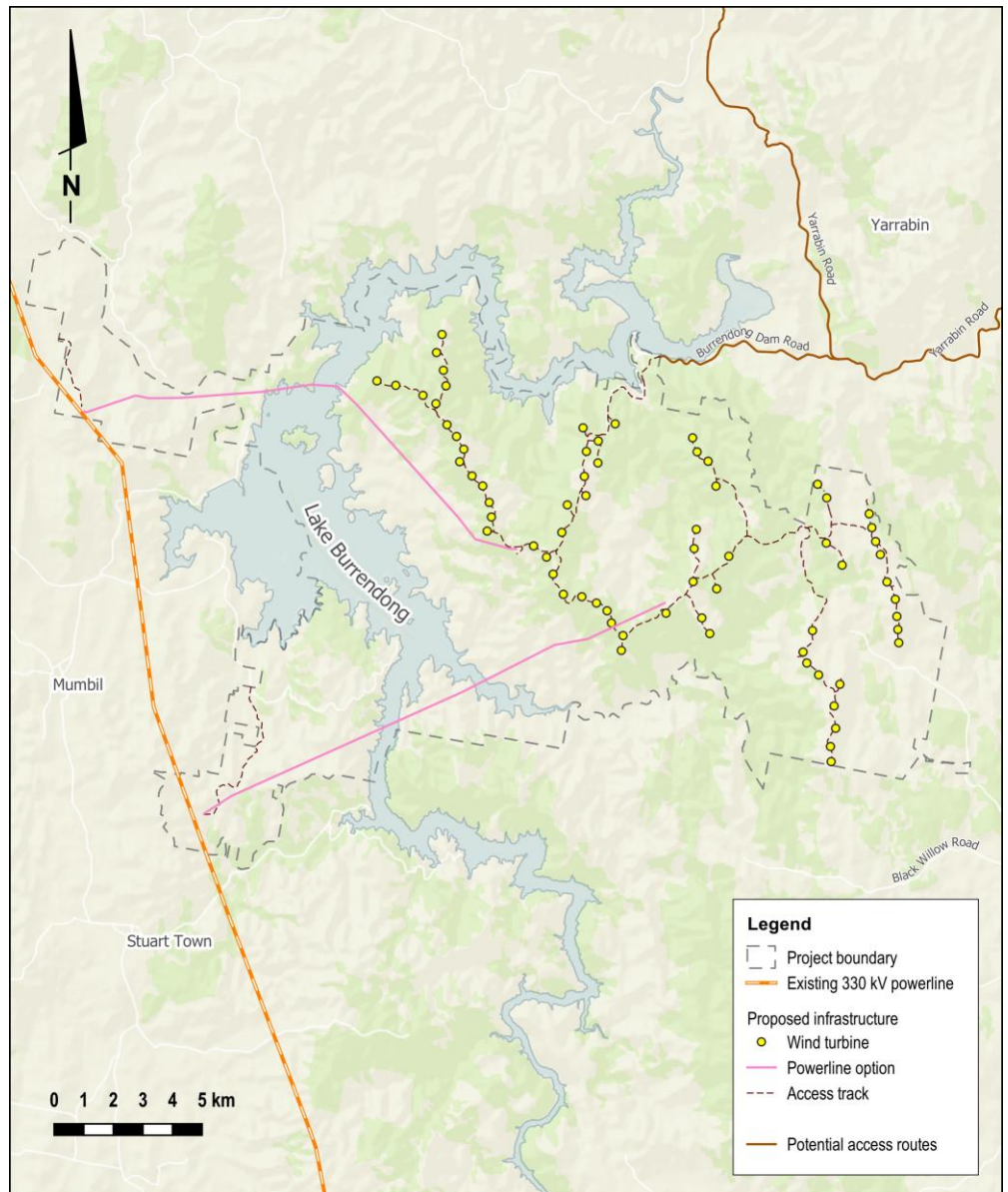
The Burrendong Wind Farm proposal involves up to 70 wind turbines with a generation capacity of approximately 400 to 500 megawatts (MW).

Planning & assessment

Utility-scale wind farms in NSW are considered State Significant Development and assessed by the NSW Department of Planning and Environment.

- 1 Site selection and preliminary investigations ✓
- 2 Initial concept and consultation ✓
- 3 Referral (updated) to the Australian Department of Climate Change, Energy, the Environment and Water (DCCEEW) for review under the Commonwealth *Environment Protection and Biodiversity Conservation Act 1999* (EPBC Act). ✓
- 4 Scoping Report (updated) submitted to the NSW Department of Planning and Environment (DPE) ✓
- 5 Determination on EPBC Act referral by DCCEEW - controlled action with assessment under bilateral agreement (Ref 2022/09268) ✓
- 6 Secretary's Environmental Assessment Requirements (SEARs) for the Environmental Impact Statement (EIS) issued by DPE ✓
- 7 Studies, assessments, design ✓
- 8 **Finalising EIS for lodgment** **WE ARE HERE**
- 9 Development application (DA) and EIS lodged with DPE
- 10 DA and EIS on exhibition for public comment
- 11 Responses to submissions and requests for further information (if required)
- 12 Assessment by DPE
- 13 DPE assessment report and recommendation
- 14 Determination by DCCEEW

Burrendong Wind Farm site map – 70 wind turbines



The current design involves a layout of 70 wind turbines with a generation capacity of 400 to 500 MW.

Community benefits

Wind farms generate significant economic benefits for local and regional communities including jobs and contract work, increased patronage for businesses and retail, and a community benefit fund. Suggestions on priorities that could be supported by the community benefit fund can be sent to the project team via email or the feedback form on the project website. We look forward to working with the community to deliver meaningful and lasting local benefits from the project.

Thank you

Thank you to everyone who has engaged with us for this proposal to date. We welcome input to help shape the project and maximise local benefits. Questions and feedback can be sent to the project team at any time via info@burrendongwindfarm.com.au or the online feedback form on the project website.

More information

Tel - 1800 731 296

Email - info@burrendongwindfarm.com.au

Register for newsletters - arkenergy.com.au/mailling-list-details

Website - burrendongwindfarm.com.au or scan QR code right.

