

# Boomer Green Energy Hub - viewpoint 7

75° FOV Northerly view from Apis Creek Road, Balcomba - viewpoint 7 (149 hub, 172m rotor - 235 tip height)



330°

340°

350°

N

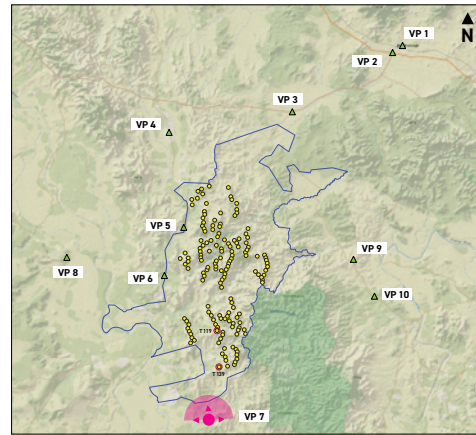
10°

20°

30°



Aerial: viewpoint location and direction shown as a pink marker.



Site Map: viewpoint location and direction shown as a pink marker

## Viewpoint information

**Horizontal field of view:** 75°

**Bearing to closest turbine:** 11.2° (T139)

**Distance to closest turbine (m):** 7,885m

**Bearing to closest visible turbine:** 5.6° (T119)

**Elevation:** 143.2m

**Photo Taken:** 5:29pm on 12th of Dec 2022

**Camera:** Nikon D810, 50mm Prime Lens

**Photo Coordinates:** E:769,136 N: 7,419,032

**Projection:** MGA Zone 55 (GDA 94)

**Original Format:** A1 Landscape

\* Photomontage and wireframe provide a 'representation' of the projects visibility for the purpose of discussion. The layout as shown may be subject to change in accordance with the planning process. The images provide a reasonable impression of wind turbine scale and distance to wind turbines; however, cannot be 100% accurate. A static image cannot convey wind turbine blade movement, different lighting, weather and seasonal conditions that vary through time.