

**Details for CCC meeting No 9****Venue:** Coolah Council Chambers**Address:** 59 Binnia Street Coolah 2843**Date:** Tuesday 28<sup>th</sup> July 2015**Time:** 12 noon – 2pm

## Items for CCC Meeting No 9

1. CCC member list
2. Epuron action items arising from CCC meeting 8
3. Development update
4. Powerline update
5. CCC discussion points
6. Next steps and timing
7. Communications and other information



## CCC Membership Update

Membership Group	Representative
Independent Chairperson	<ul style="list-style-type: none"> <li>• Danielle Annells</li> </ul>
Involved Landowners	<ul style="list-style-type: none"> <li>• Ant Martin</li> <li>• Anne-Louise Capel</li> </ul>
Uninvolved Landowners	<ul style="list-style-type: none"> <li>• Linda Gant</li> <li>• Greg Piper</li> </ul>
Local Councils	<ul style="list-style-type: none"> <li>• Alia Slamet – Warrumbungle Shire Council</li> <li>• Councillor Ron Campbell – Upper Hunter Shire Council</li> <li>• Sean Constable – Upper Hunter Shire Council</li> <li>• Donna Ausling – Liverpool Plains Shire Council</li> </ul>
Local Business / Groups / Associations	<ul style="list-style-type: none"> <li>• Graeme Booker – Coolah Caravan Park</li> <li>• Julia Imrie – Mudgee District Environment Group</li> </ul>
Observers for this meeting	<ul style="list-style-type: none"> <li>• Gordon Fraser – NSW Office of Environment &amp; Heritage</li> <li>• Steve Loane – General Manager Warrumbungle Shire Council</li> <li>• Waid Crockett – General Manager Upper Hunter Shire Council</li> <li>• Andrew Ellis – NSW Department of Industry, Resource and Energy</li> <li>• Warwick Giblin – OzEnvironmental Pty Ltd</li> </ul>
Proponent	<ul style="list-style-type: none"> <li>• Hugh Sangster- Epuron</li> <li>• Donna Bolton - Epuron</li> </ul>

## Summary of Epuron action items from CCC meeting 8

1. SEPP Lighting Plan added to list for consideration
2. Radio interview carried out with Three Rivers Radio
3. Combined meeting 7 and 8 media summary prepared and sent
4. Gullen Range wind farm community information sent to CCC members
5. Updated community feedback form circulated to CCC
6. Next newsletter to mention requirement to secure environmental offset land

## Development Update

- New Project Manager – Hugh Sangster
- New Land Manager – Donna Bolton
- DP&E publicly exhibiting the EA from 1 August to 1 October (62 days).
- 43 submissions received (48 when you include duplicates)
  - 12 from agencies providing comments
  - 31 from public with 5 supportive, 9 comments and 17 objections
  - 9 of the objections came from over 200km away
- Main items raised in submissions
  - Agency: Traffic and transport, community enhancement fund, fire and a number of others
  - Public: Visual, noise, biodiversity, community consultation, community enhancement, land values, health and a number of others
  - Submissions available on the DP&E major projects website

## Development Update

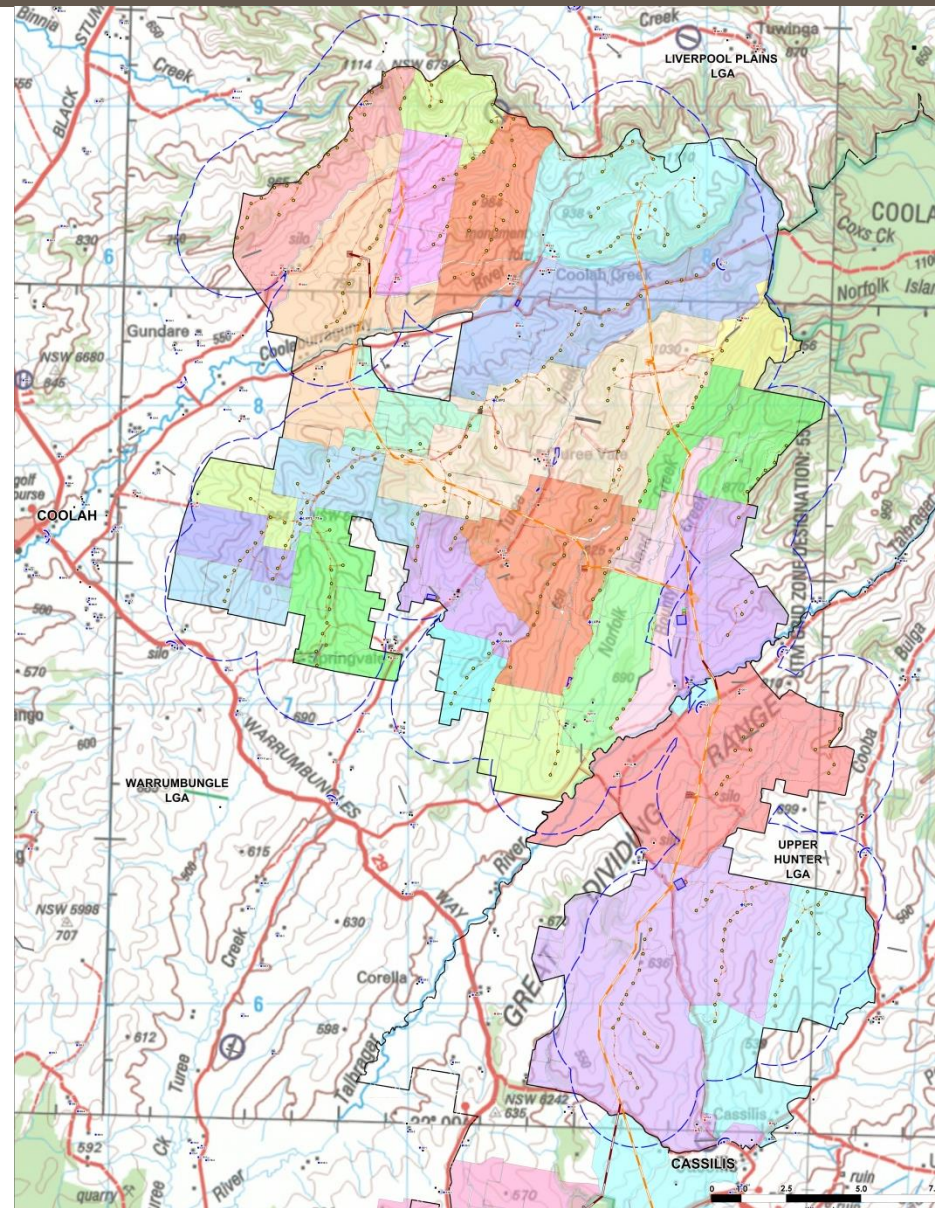
- Response to submissions is currently being prepared with more work on
  - traffic and transport, aviation, biodiversity, heritage, visual and noise
  - Some changes have been made to infrastructure responding to submissions
    - Power line alignment modifications in response to OEH comments, potential land use conflict at Ulan connection point etc.
    - Infrastructure within the wind turbine areas is likely to have minor modifications e.g: 1 x turbine removed from Liverpool Plains Council area, relocation of construction compounds, roads etc. In response to submissions etc.
- Department of Planning and Environment (DP&E) will then review the response to submissions and produce a recommendation on approval
- The Planning Assessment Commission (PAC) will make the final decision on planning approval based on the recommendation of the DP&E.

## Development Update

- Public consultation continuing since last CCC through newsletters, meetings, letters, conversations etc.
  - Australian Astronomical Observatory
  - Moolarben Coal, Ulan Coal and others
  - Councils
  - Local community
  - Aboriginal land groups
  - Landowners
  - Government agencies
  - Etc...



# Development Update

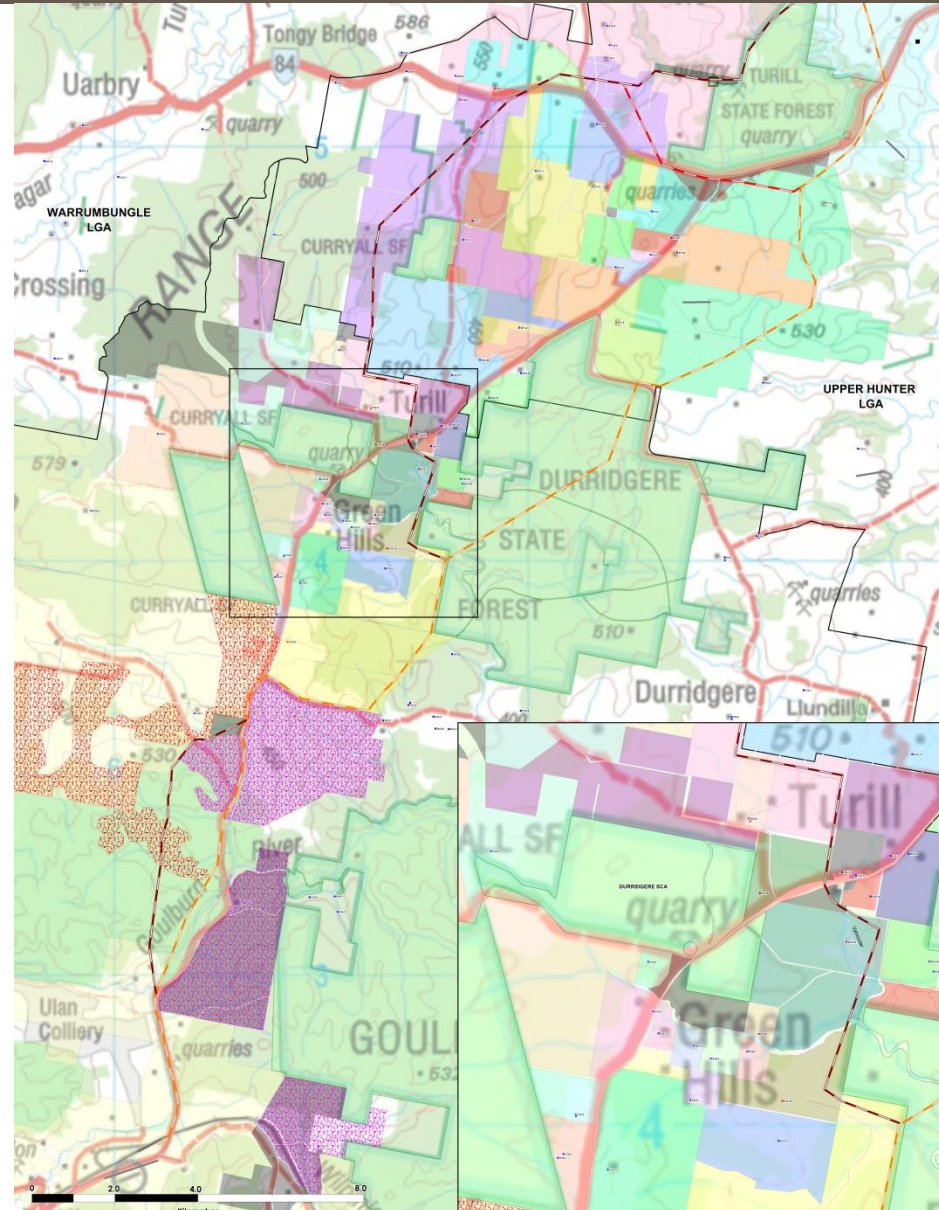


## Powerline Update

- Most recent work has focused on finalising a route for the powerline.
- Alignment is being worked on to address various constraints including minimising potential impact on Durridgere State Conservation Area and biodiversity and other constraints more generally as identified in Submissions.
- Working with land owners to identify alternative routes in the area.
- Final route proposal could be an amended route with section of preferred and secondary route from the exhibited Environmental Assessment.
- Final route proposal still to be finalised and will be presented in the Response to Submissions document lodged to the DP&E.
- Due to constraints, likely route will be located close to Ulan Road for the southern portion of the route to the connection point near Ulan.



# Powerline Update



## CCC Discussion Points

- Recent community consultation and feedback
  - Any feedback or communication to report from the community
- Establishment of a Community Enhancement Fund
  - Further thoughts on required community support and preferred delivery model
  - Councils to provide further detail on Voluntary Planning Agreements (VPA)
- Proposal for a combined business meeting in Cassilis
- Any carry over agenda items or discussion points from previous meetings

## Next Steps and Timing

- Exhibition period closed - 1 October 2014
- Landowner & community consultation - Ongoing
- Next project newsletter - Anticipate release Oct - Nov2015
- CCC Meeting No 10 - Date TBC (suggest Nov or Dec 2015)
- Response to submissions lodgement - Expected late 2015
- Combined Business Meeting (Cassilis) - Date TBC



## Glossary

- DP&E Department of Planning & Environment
- CCC Community Consultation Committee
- EA Environmental Assessment
- MW Megawatt
- OEH Office of Environment & Heritage
- kV Kilovolt
- EPA Environmental Protection Authority
- LVIA Landscape & Visual Impact Assessment
- BA Biodiversity Assessment
- NIA Noise Impact Assessment
- LRWF Liverpool Range Wind Farm
- WTG Wind turbine generator
- RET Renewable Energy Target
- COB Close of business



## Consultation – Communication and Feedback

- Consultation is a two-way-street and we're always listening
- Feedback and suggestions are important to us
- Available communication channels include;
  - Epuron corporate website: [www.epuron.com.au](http://www.epuron.com.au)
  - Liverpool project website: [www.liverpoolrangewindfarm.com.au](http://www.liverpoolrangewindfarm.com.au)
  - Mailing address: Liverpool Range Wind Farm  
Level 11, 75 Miller Street  
North Sydney NSW 2060
  - Phone: 02 8456 7400
  - Fax: 02 9922 6645
  - Email: [liverpoolrange@epuron.com.au](mailto:liverpoolrange@epuron.com.au)
  - Project Manager: Hugh Sangster  
[h.sangster@epuron.com.au](mailto:h.sangster@epuron.com.au)
  - Land Manger: Donna Bolton  
[d.bolton@epuron.com.au](mailto:d.bolton@epuron.com.au)
  - Meetings Arranged by appointment

**Thank you and please send your feedback to [liverpoolrnage@epuron.com.au](mailto:liverpoolrnage@epuron.com.au)**