

# Bowmans Creek Wind Farm



Photomontage showing what the Bowmans Creek Wind Farm would look like from Inglewood Road, Muscle Creek.

## New project owner

In May 2022 Ark Energy completed its friendly acquisition of Epuron, the proponent for the Bowmans Creek Wind Farm, and in October 2022 the Epuron brand was retired.

Ark Energy is an Australian subsidiary of Korea Zinc, the world's largest producer of zinc and the first major refiner to join RE100 and commit to powering its global operations from 100% clean energy by 2050.

There are no changes to plans for the Bowmans Creek Wind Farm as a result of the change in ownership.

## Project update

In early 2022 Ark Energy responded to submissions on the Development Application and Environmental Impact Statement, and made a number of changes to the proposal to reduce environmental impacts. Since then Ark Energy has also responded to further requests for additional information from the NSW Department of Planning and Environment (DPE), to assist DPE in finalising its assessment.

Ark Energy is also in discussions with Upper Hunter, Singleton and Muswellbrook Shire Councils about the project's Community Enhancement Fund and with landowners to finalise plans for the powerline.

## Community benefits

Wind farms generate significant economic benefits for local and regional communities including jobs, contract work and patronage for businesses and retail.

Bowmans Creek Wind Farm involves a range of benefits to provide meaningful and lasting benefits to residents and property owners in the local community.

The project's Community Enhancement Fund has been increased to \$686 per installed megawatt – or \$3,842 per wind turbine – per year, indexed to CIP, from the start of generation and for the life of the wind farm. Based on the current proposed layout of 56 wind turbines this would amount to more than \$215,000 per annum.

Resident owners of a dwelling within 5 km of an installed wind turbine are also eligible for a Neighbour Agreement (within 3.3km) or to participate in the project's Neighbour Benefit Program (within 3.3-5km). More details on these are available on the project website's 'Community' page.

It is also estimated that the project would generate at least \$114 million expenditure in the regional economy and create up to 150 jobs during construction.

We look forward to continuing to work with local stakeholders and community members to deliver meaningful and lasting local benefits from the project.

## Location



The Bowmans Creek Wind Farm site is approximately 10 km east of Muswellbrook. It is in the Hunter-Central Coast Renewable Energy Zone, an area identified as optimal for new projects to support the state's renewable energy growth and clean energy transition.

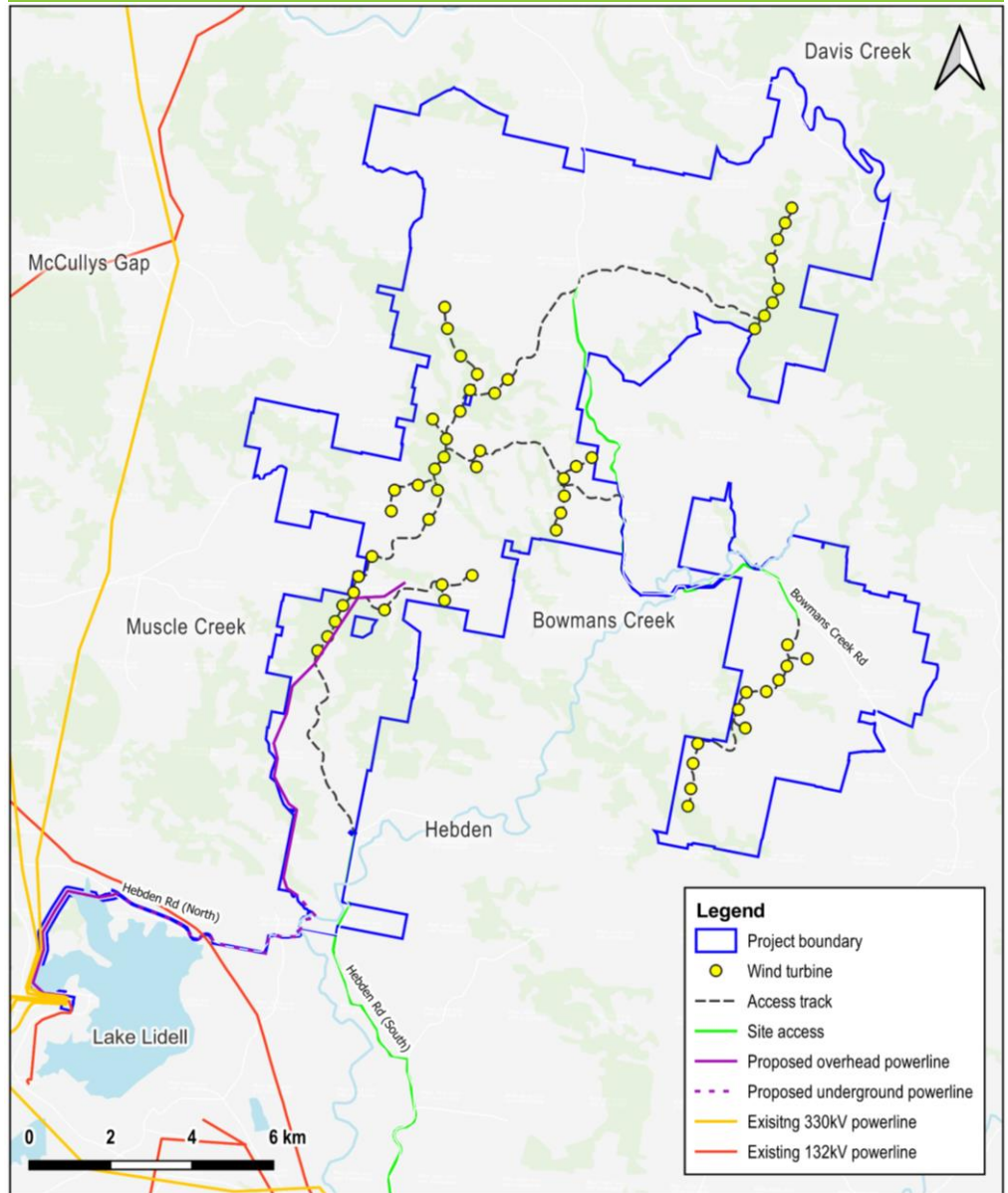
- 56 wind turbines.
- Capacity of ~347 megawatts.
- Up to 150 jobs during construction and 15 ongoing jobs during operation.
- Boost of approx. \$114 million to the regional economy.
- Community fund of \$215,000 per annum from start of generation.
- Neighbour benefit programs.

## Planning & assessment

Utility-scale wind farms in NSW are considered State Significant Development and assessed by the NSW Department of Planning and Environment.

- 1 Site selection and preliminary investigations ✓
- 2 Initial concept and consultation ✓
- 3 Referral to the Australian Department of Climate Change, Energy, the Environment and Water (DCCEEW) for review under the Commonwealth *Environment Protection and Biodiversity Conservation Act 1999* (EPBC Act). ✓
- 4 Scoping Report submitted to the NSW Department of Planning and Environment (DPE) ✓
- 5 Determination on EPBC Act referral by DCCEEW - controlled action with assessment under bilateral agreement (EPBC Number: 2020/8631) ✓
- 6 Secretary's Environmental Assessment Requirements (SEARs) for the Environmental Impact Statement (EIS) issued by DPE ✓
- 7 Studies, assessments, design ✓
- 8 Design completed, finalising EIS for lodgment ✓
- 9 Development application (DA) and EIS lodged with DPE ✓
- 10 DA and EIS on exhibition for public comment ✓
- 11 Response to submissions ✓
- 12 Responses to requests for further information (RFI) **WE ARE HERE**
- 13 Assessment by DPE
- 14 DPE assessment report and recommendation
- 15 Determination by DCCEEW

## Bowmans Creek Wind Farm site layout – 56 wind turbines



The project area is approximately 10 km east of Muswellbrook, past Lake Liddell, and involves a number of properties near Muscle Creek, Bowmans Creek and Hebden. It involves 56 wind turbines connected to the nearby powerlines and would have an output capacity of 347 MW.

### Assessment documentation

The project's assessment documentation is available on the Bowmans Creek Wind Farm project page in the NSW Government's Major Planning Portal: [www.planningportal.nsw.gov.au/major-projects/projects/bowmans-creek-wind-farm](http://www.planningportal.nsw.gov.au/major-projects/projects/bowmans-creek-wind-farm)

### Questions and feedback

Questions and feedback are welcome at any time and can be sent directly to the project team via the details below or the form under the 'Feedback' tab on the project website.

### More information

Tel - 1800 731 296

Email - [info@bowmanscreekwindfarm.com.au](mailto:info@bowmanscreekwindfarm.com.au)

Register for newsletters - [arkenergy.com.au/mailling-list-details](http://arkenergy.com.au/mailling-list-details)

Website including news archives and feedback form - [bowmanscreekwindfarm.com.au](http://bowmanscreekwindfarm.com.au) or scan QR code



Scan QR CODE to visit the website