

# Boomer Green Energy Hub



Photograph of the project area

## Project update

Wind monitoring in the project area is continuing, further proving the excellent resource. There are currently three mobile wind monitoring units (Sodars) and two 120 m high meteorological masts located across the site, with plans to install an additional mobile wind monitoring unit (Lidar) and two 150 m high met masts.

The first year of onsite surveys by ecologist teams has been completed, with ecology surveys conducted in Autumn and Spring, including for bird, bat, reptile and mammal species.

Engagement with the Traditional Owners for the project area, Barada Kabalbara Yetimarala Peoples, is ongoing for a Cultural Heritage Management Agreement.

The project team is also progressing work on the various other studies required for the development application (DA), with a view to lodging the DA this year.

## Commonwealth to assess proposal

Ark Energy referred the proposal for the Boomer Green Energy Hub to the Australian Department of Climate Change, Energy, the Environment and Water (DCCEEW) for review under the *Environment Protection and Biodiversity Conservation Act 1999* (EPBC Act).

Based on the referral DCCEEW has determined the proposal to be a controlled action. This means it will require assessment and approval under the EPBC Act before it can proceed.

The relevant controlling provisions for the decision are: listed threatened species and communities (sections 18 & 18A), listed migratory species (sections 20 & 20A), Great Barrier Reef Marine Park (sections 24B & 24C), World Heritage properties (sections 12 & 15A) and National Heritage places (sections 15B & 15C).

DCCEEW will assess the proposal by an environmental impact statement (EIS).

The project's EPBC Act referral and documentation is available from the project's page in the EPBC Public Portal: [epbcpublicportal.awe.gov.au](http://epbcpublicportal.awe.gov.au). (EBPC number 2022/09396).

## Information Session - Marlborough, 10 May

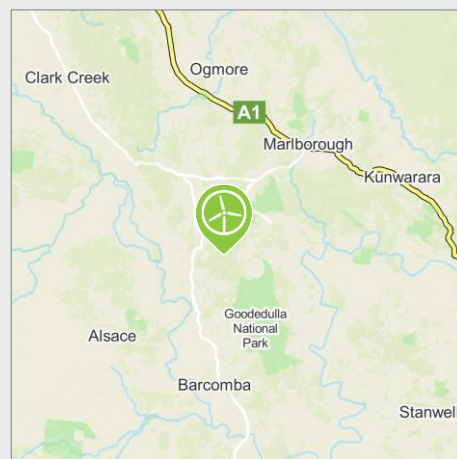
A public information session will be held in Marlborough next month to give interested local residents and other community members an opportunity to discuss the proposal with the project team.

4-6pm Wednesday 10 May 2023

Marlborough Community Hall, Milman Street, Marlborough

Everyone is welcome. To assist with catering please RSVP by 8 May via email to: [info@boomerhub.com.au](mailto:info@boomerhub.com.au). The project team looks forward to meeting community members and the opportunity to discuss the project in detail with local stakeholders.

## Location



The project area for the Boomer Green Energy Hub is approximately 100 km north-west of Rockhampton and 30 km south-west of Marlborough in central Queensland. It is in the candidate Central Queensland Renewable Energy Zone, an area identified as optimal for new renewable energy generation.

- Estimated to create 350+ jobs during construction and ~20 full-time jobs for operation.
- Estimated to generate ~\$600 million in local and regional expenditure.
- Will involve a community fund to share benefits with nearby communities, from start of construction and for the life of the project.
- Start construction (target): Q1 2025
- Completion (target): Q4 2026
- Output capacity of ~1,100 MW.

## Planning & assessment

### Queensland Government

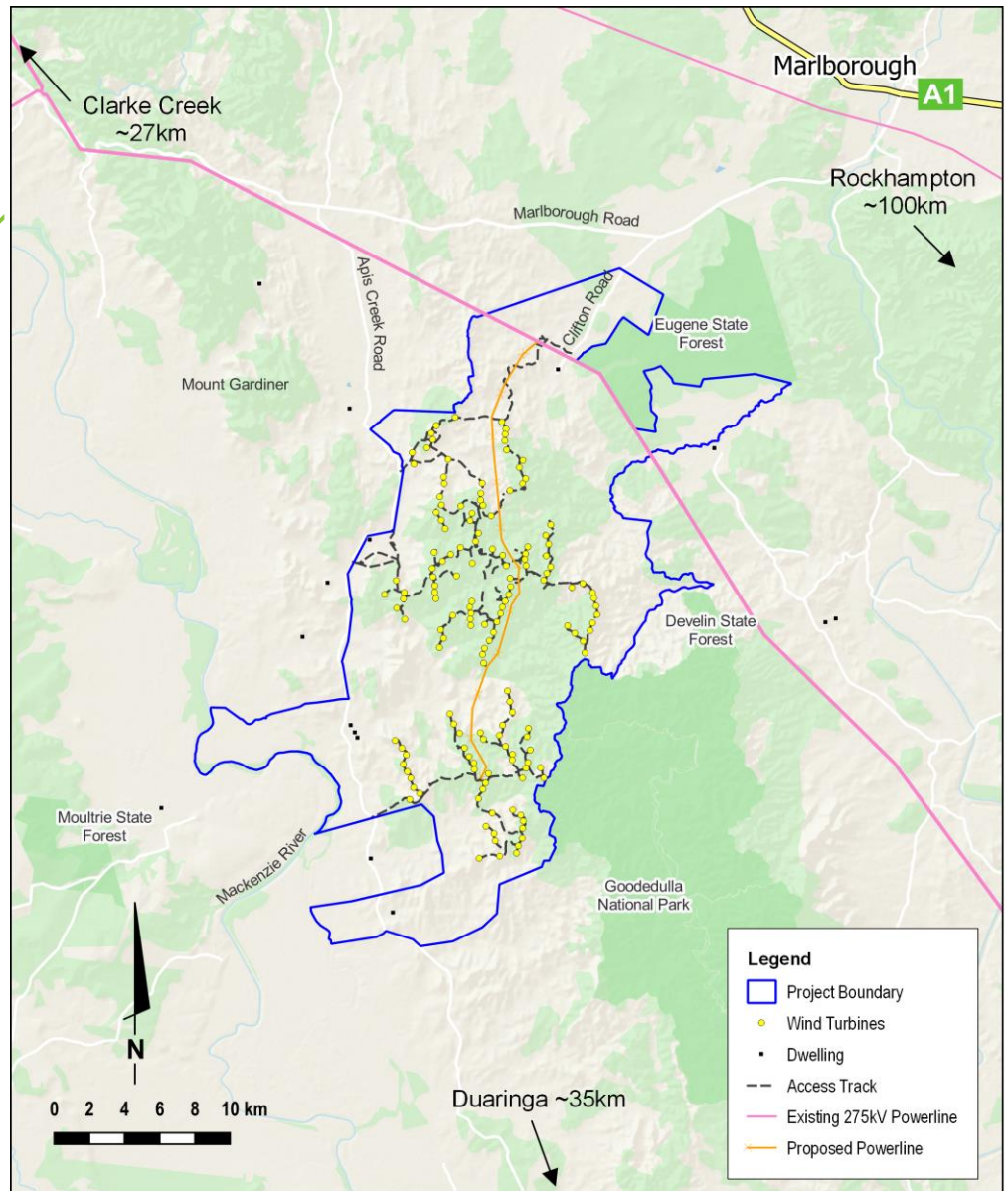
- 1 Site selection, initial concept and preliminary investigations ✓
- 2 Pre-lodgment meeting with the State Assessment and Referral Agency (SARA) ✓
- 3 Studies and assessments (prescribed by planning requirements) **WE ARE HERE**
- 4 Development application and assessments lodged with SARA
- 5 Requests for further information (if required) and response
- 6 Assessment
- 7 Determination



### Australian Government

- 1 Referral to the Department of Climate Change, Energy, the Environment and Water (DCCEEW) for review under the *Environment Protection and Biodiversity Conservation Act 1999* (EPBC Act)
- 2 Determination and advice on appropriate assessment pathway. **WE ARE HERE**
- 3 Preparation of assessment
- 4 Draft assessment submitted for adequacy review
- 5 Request from DCCEEW for further information (if required) and response
- 6 Assessment accepted by DCCEEW and placed on public exhibition
- 7 Response to submissions (if required) and lodgment of updated assessment
- 8 Final assessment submitted
- 9 Determination

## Boomer Green Energy Hub indicative layout



The project area is ~100 km north-west of Rockhampton and 30 km south-west of Marlborough. It involves 151 wind turbines connected to the existing 275 kV powerline and would have an output capacity of ~1,100 MW.

## Questions and comments

Questions and feedback are welcome at any time and where practicable input from the community and local stakeholders is incorporated into the project to improve outcomes and local benefits. Comments can be sent directly to the project team via the contact details below or the feedback form available under the 'Feedback' tab on the website.



## More information

Tel - 1800 731 296

Email - [info@boomerhub.com.au](mailto:info@boomerhub.com.au)

Sign-up for newsletters - [arkenergy.com.au/mailling-list-details](http://arkenergy.com.au/mailling-list-details)

Website - [boomerhub.com.au](http://boomerhub.com.au) or scan QR code right



Scan QR code to visit the website