

St Patricks Plains Wind Farm



Photomontage showing what St Patricks Plains Wind Farm would look like from Highland Lakes Road near Steppes Hall.

Update on Environmental Impact Statement

The project team is working through the detailed stage of the planning process to enable the project's Environmental Impact Statement (EIS) to go on public exhibition. The EIS will respond to the Project Specific Guidelines issued for the St Patricks Plains Wind Farm by the Environment Protection Authority Tasmania (EPA), and will:

- Describe the project, its potential for impacts and outline how these have been avoided, minimised and mitigated, and how residual impacts will be managed.
- Provide technical and specialist reports detailing the findings of impact studies and assessments, including for avifauna, flora and terrestrial fauna, noise, socio-economic impacts, traffic, landscape and visual impacts, shadow flicker, communications, electromagnetic interference (EMI) and hydrogeology.

After the development application (DA) has been lodged with Central Highlands Council it will be sent to the EPA and once accepted by the EPA it will go on public exhibition for six weeks. Subject to government processes it is anticipated that the DA and EIS will go on public exhibition during Q2 this year.

Exhibition of the documents will provide the opportunity for neighbours, community members and other interested stakeholders to review the full details of the project and make a submission, either to raise concerns or show support for the project. Ark Energy welcomes input from community members and project stakeholders, and this will be an important step in the process to ensure relevant matters are adequately addressed and considered.

Register your interest to provide services, accommodation

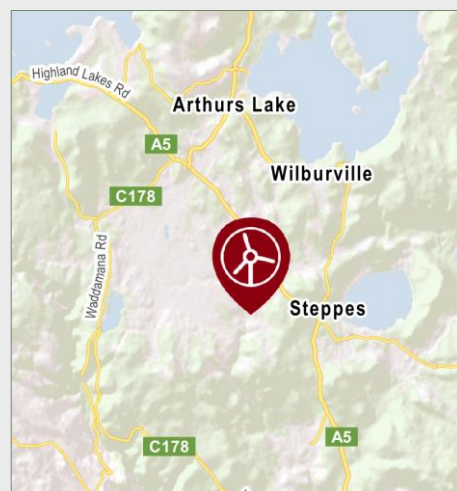
Thank you to all those who have provided details of accommodation available for leasing or registered their interest to provide work or services during the project's construction and/or operation. This information has been recorded in the project database. To register an interest to work on the project or provide services or accommodation, please contact the project team via phone or email or drop into the information centre (details overleaf) and leave your full contact details.



Thank you to everyone who has visited the project's information centre in Bothwell, currently open 10am to 4pm on Fridays.

During the EIS exhibition period the EIS will be available in the centre, which will be open for additional days including some weekends, to enable convenient access to all information. Opening times will be posted on the website.

Location



The site for St Patricks Plains Wind Farm is about 10 km south-east of Miena and 25 km north of Bothwell in the Central Highlands. It is located within one of Tasmania's candidate renewable energy zones, areas identified by the Australian Energy Market Operator as optimal for new renewable energy generation.

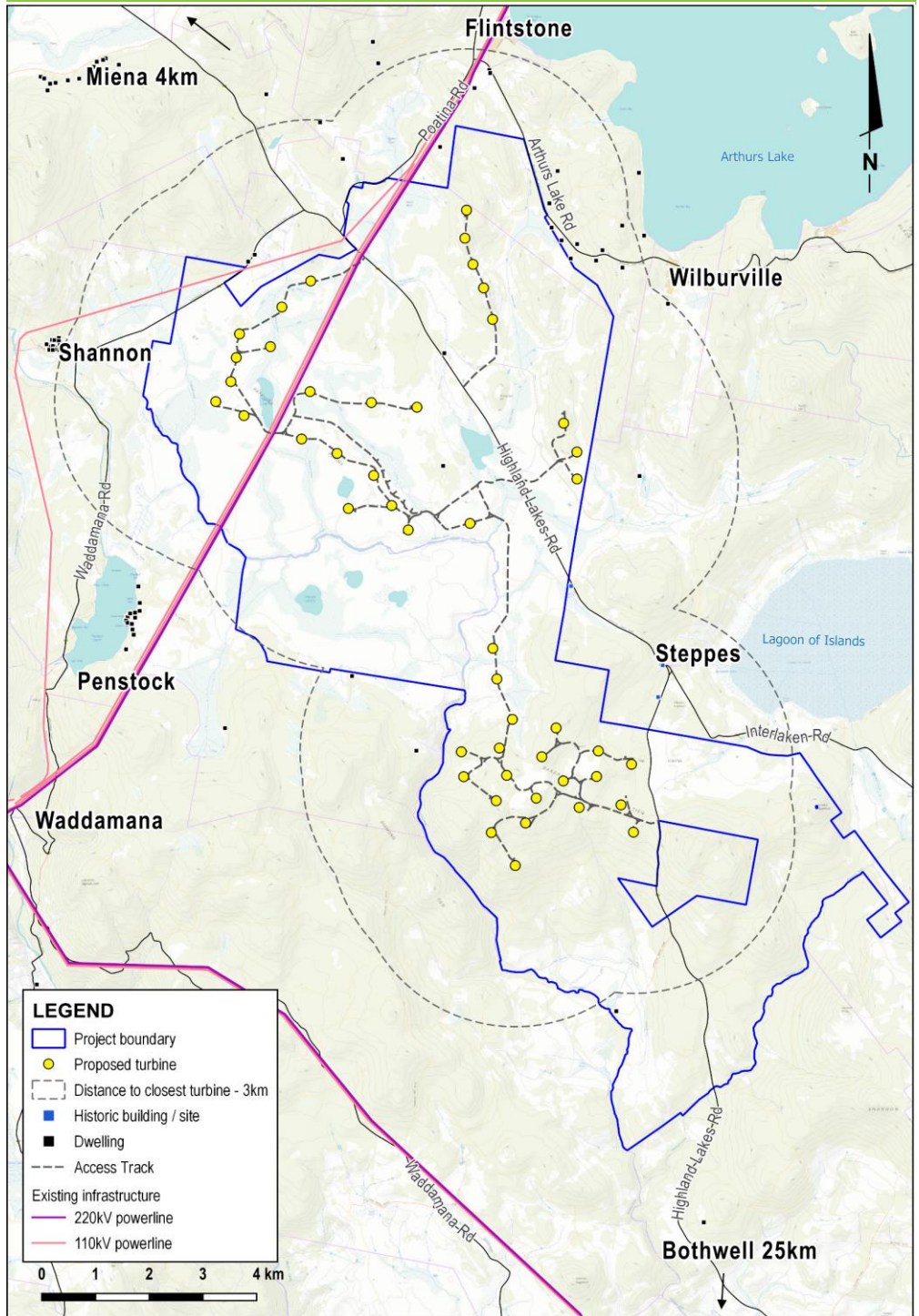
Key project information:

- 47 wind turbines.
- Wind turbine tip height of 231m.
- Up to 300 megawatts of clean, renewable energy.
- Up to 200 jobs during construction and up to 20 jobs during operation.
- Construction period of 24 months.
- Community Benefit Fund for the life of the wind farm.

Planning & assessment

The Development Application will be determined by Central Highlands Council and the Environmental Impact Statement (EIS) will be assessed by the Environment Protection Authority Tasmania (EPA).

St Patricks Plains Wind Farm site map - 47 wind turbines



1 Site selection and preliminary investigations ✓

2 Referral to the Australian Department of Climate Change, Energy, the Environment and Water (DCCEEW) for review under the Commonwealth *Environment Protection and Biodiversity Conservation Act 1999* (EPBC Act).
* Determined a Controlled Action with assessment under bilateral agreement (Ref 2019/8497). ✓

3 Notice of Intent lodged with the EPA ✓

4 Project Specific Guidelines for the EIS issued by the EPA ✓

5 Studies, assessments, site design ✓

6 Preparing EIS for lodgment **WE ARE HERE**

7 Development application (DA) and EIS submitted to Central Highlands Council

8 EIS referred by Council to the EPA

9 EIS on exhibition for public comment

10 Responses to submissions and requests for additional information (if required)

11 Assessment by the EPA

12 EPA approval conditions provided to Council

13 Assessment by Council

14 Determination by Council

15 Determination by DCCEEW

Questions

Thank you to all those who have engaged with us on this project to date. Questions and feedback are welcome at any time and can be sent directly to the project team via the contact details below and the form under the 'Feedback' tab on the website.

More information

Visit - St Patricks Plains Wind Farm Information Centre, 16a Patrick Street, Bothwell. 10am-4pm Fridays unless otherwise advised - please check the website.

Tel - 1800 731 296.

Email - info@stpatricksplainswindfarm.com.au

Register for updates - arkenergy.com.au/mailling-list-details

Website - stpatricksplainswindfarm.com.au or scan QR code



Scan QR CODE to visit the website