

Liverpool Range

Wind Farm

Project Update | February 2011

Liverpool Range Wind Farm Project Update

Since our previous update in November, Epuron has been very active in progressing the Liverpool Range Wind Farm. A significant milestone was reached with the submission to the Department of Planning (DoP) of the project application form under Part 3A of the Environmental Planning & Assessment Act 1979 (EP&A Act), on Friday 11th February 2011. The Preliminary Environmental Assessment (PEA) also accompanied the lodgement of the project application. Discussions with potentially involved landowners are ongoing, however we have had very positive feedback allowing us to consolidate site boundaries, and in places increase the size of the project, providing a greater benefit across the community.

Project Summary

The project application proposes the following:


- Construction and operation of up to 550 wind turbines, together with associated control and maintenance buildings, civil works and electrical infrastructure.
- Turbine development area to be located across three shires (Figure 1)
- Proposed site area to cover approximately 40km (east-west) by 50km (north-south)
- Construction likely to occur in stages.
- A new powerline to connect the Project to the existing grid, with the most likely connection point at Transgrid's 330kV Wollar-Wellington powerline located to the south of the site.

The proposal will be further refined during the environmental assessment and technical design phases.


Planning Process

This project is considered a Major Project and will be assessed by the DoP and determined by the Minister for Planning under Part 3A of the EP&A Act. It will also be considered a Critical Infrastructure Project under the Act, as it has the capacity to generate in excess of 30 Megawatts.

Register your interest by:

 Write to us: Liverpool Range Wind Farm
Level 11, 75 Miller St
North Sydney NSW 2060

 Email us: info@epuron.com.au

 Phone us: 02 8456 7400



Next Steps..

The lodgement of the project application will trigger the creation of site specific Director General's Requirements or DGRs. These are a list of issues government agencies wish to have investigated in the development of the site.

The DGRs will be the focus of the Environmental Assessment (EA) Epuron will prepare and lodge with the DoP. When the DoP is satisfied that the EA adequately addresses the DGRs it will go on public exhibition for public comment and submissions. The Minister then takes these submissions into consideration before making any determination.

An important part of the development of the site is community consultation. Epuron has already held meetings with community groups and individuals. In due course we will hold another community Open House, most probably in Coolah, aimed at providing more specific information about the project to the local community and other stakeholders. At this Open House we hope to hear community views of the wind farm and in particular from neighbours living in proximity to the proposed development.

Environmental Assessment

Epuron has extensive experience in wind farm development in NSW and has prepared a Preliminary Environmental Assessment to help identify issues to be considered.

Key issues include:

- Visual amenity
- Biodiversity (inc flora and fauna)
- Noise amenity
- Archaeology

Additional issues include:

- Water and groundwater
- Traffic and transport
- Soil and landforms

Project Benefits

The wind farm offers significant environmental and financial benefits both locally and to the wider community, such as:

- Reducing greenhouse gas emissions, for example the entire proposed project would avoid the emission of up to 4,100,000 tonnes of CO₂ each year from coal fired power stations; the equivalent of removing 945,000 cars from our roads.
- Supplying considerable renewable energy to assist in meeting growing electricity demand in NSW and state and federal renewable energy targets
- Directly injecting funds into local community by providing local jobs and use of local services during construction.
- Community contributions following completion, and landowner payments for the life of the wind farm.
- Helping both NSW and Australia to transition to renewable sustainable energy.
- Producing around 4,215,000 Megawatt hours of clean, renewable energy, or equivalent usage for 525,000 homes.

Who is Epuron?

Epuron Pty Ltd is a NSW based renewable energy company active in the development of wind projects. To confirm the viability of wind projects in NSW, Epuron has established an extensive network of wind monitoring masts. Data from this network plus the onsite masts confirms that wind speeds are high at Liverpool Range Wind Farm and more than sufficient for a viable wind farm development. To date Epuron has developed the largest wind farm, the largest number of wind farms, and the largest number of wind turbines in NSW, making it one of the most experienced wind developers in Australia.

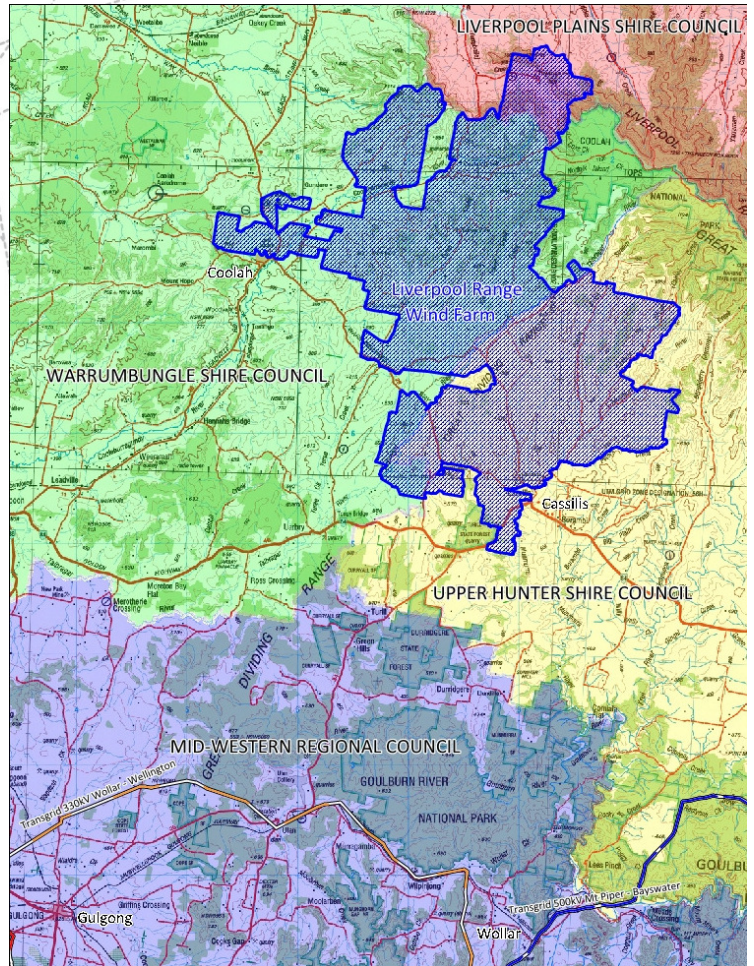


Figure 1. Locality Map



Figure 2 Mast onsite at Liverpool Range