

# Liverpool Range

## Wind Farm

EPURON

Project Update No 11 | August 2014

### Project Update

The Environmental Assessment (EA) for the Liverpool Range Wind Farm (LRWF) was first submitted to the NSW Department of Planning & Environment (DP&E) for assessment in February 2013. The document has been revised several times since then and on the 7<sup>th</sup> of July 2014 the EA was deemed adequate for exhibition by the DP&E. This means the EA will be on public exhibition for 62 days from the 1<sup>st</sup> of August 2014 to the 1<sup>st</sup> of October 2014.

### Public Exhibition – Have Your Say

You can view printed documents during normal business hours, at:

- Warrumbungle Shire Council – Coonabarabran office
- Warrumbungle Shire Council – Coolah office
- Upper Hunter Shire Council – Scone office
- Upper Hunter Shire Council – Merriwa office
- Liverpool Plains Shire Council – Quirindi office
- Mid-Western Regional Council – Mudgee office
- Dunedoo Library
- Cassilis Library
- Department of Planning & Environment, Sydney
- Nature Conservation Council, Sydney

The EA documents may also be viewed on the Epuron website ([www.epuron.com.au](http://www.epuron.com.au)) and the Department of Planning & Environment website ([www.planning.nsw.gov.au](http://www.planning.nsw.gov.au))\*\*. Any person wishing to make a submission must ensure it reaches the DP&E by close of business Wednesday 1st of October 2014.

#### Stages of the Environmental Assessment Process

- 1 Submit Preliminary Environmental Assessment and request for Part 3A assessment to DPI. \*
- 2 Director General's Requirements issued by DPI.
- 3 Preparation and submission of the Environmental Assessment to DPI.
- 4 Adequacy review by DPI to decide if Environmental Assessment is acceptable for exhibition.
- 5 **WE ARE HERE. Environmental Assessment publicly exhibited by DPI for review & comment.**
- 6 Epuron responds to submissions.
- 7 Assessment and Determination by the Minister

### Community Consultation Committee

The most recent meeting of the Community Consultation Committee (CCC) was held on the 8<sup>th</sup> of August 2014. The CCC has met on seven occasions over the last 2 years to review project information and provide feedback where required. This feedback has been incorporated into the design of the wind farm where possible. The CCC continues to discuss key aspects of the project including local impacts and the proposed establishment of a community enhancement fund. The CCC has been a huge benefit in helping manage consultation between Epuron and the community.

### Project Locality Map

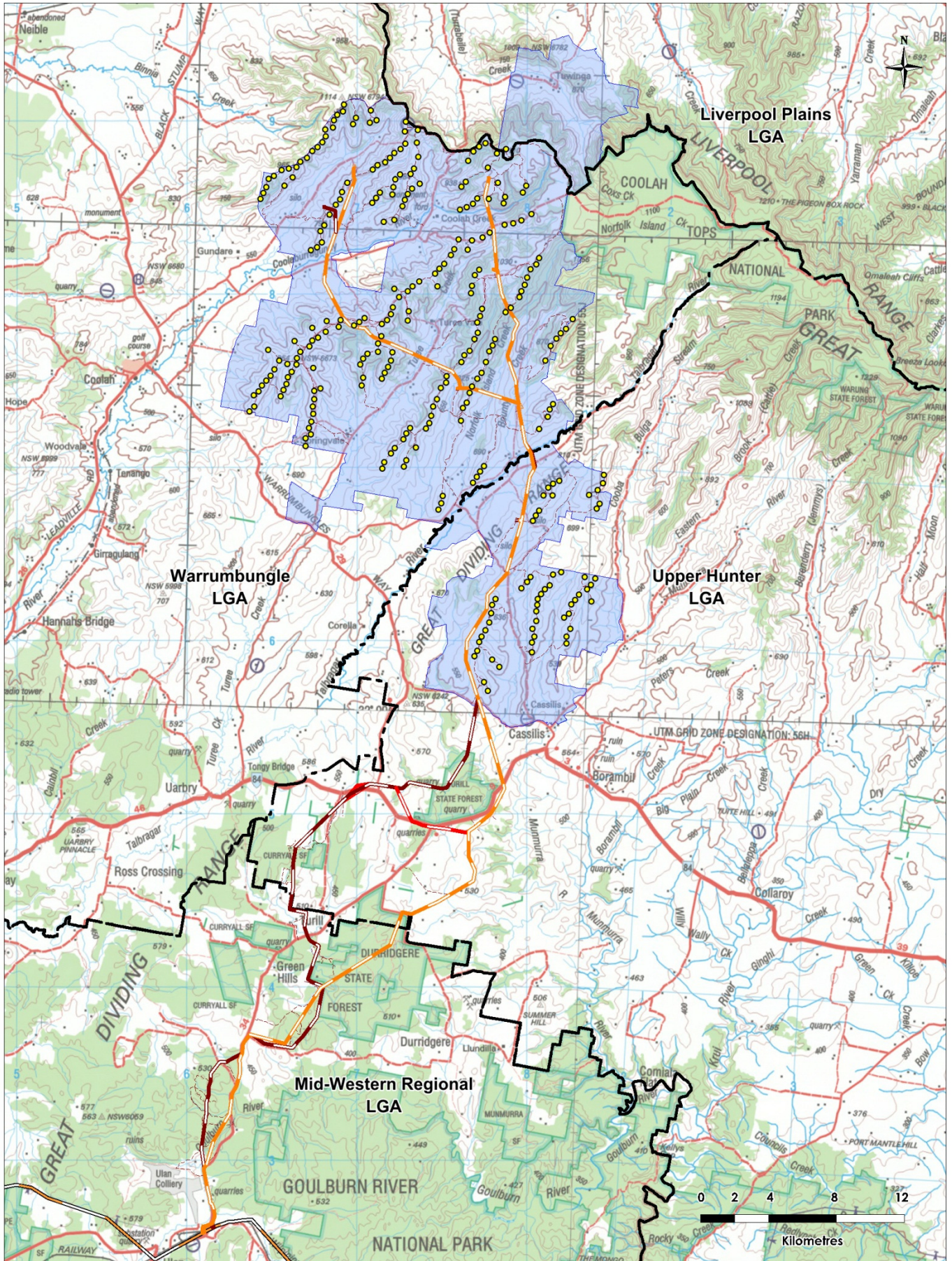
The **enclosed** wind turbine layout was submitted as part of the EA and comprises 288 turbines.

The technical and commercial arrangement for progressing a preferred and alternate powerline route are continuing. Where possible, Epuron has accommodated community feedback into the design which has culminated into the proposed routes in the EA.

\* On 21 March 2014 the Planning Minister announced the transition of the project from transitional Part 3A to 'State Significant Development' under Part 4 of the EP&A Act 1979.

\*\* Direct link: [http://majorprojects.planning.nsw.gov.au/index.pl?action=view\\_job&job\\_id=4418](http://majorprojects.planning.nsw.gov.au/index.pl?action=view_job&job_id=4418)





LEGEND

- Project area
- Proposed wind turbine
- Proposed access track
- Preferred overhead powerline
- Alternative overhead powerline
- Second alternative overhead powerline
- Existing 330 kV transmission line
- Local Government Area boundaries
- Preferred substation
- Alternative substation

**EPURON**

PROJECT

Liverpool Range  
Wind Farm

TITLE

Project boundary and  
infrastructure overview

SCALE	DATE	DRAWN
1:200,000 of A3	15/11/13	MK



## Industry News

### Australian Medical Association (AMA)

In March 2014 the AMA released their Position Paper which states there is no credible evidence that wind farms have a negative impact on the health of people who live near them. The paper found infrasound and low-frequency sound generated by modern wind farms in Australia is well below the level where known health effects occur. The paper can be found at <https://ama.com.au/position-statement/wind-farms-and-health-2014>.

### Intergovernmental Panel on Climate Change (IPCC)

The fifth report from the IPCC was released in March 2014 confirming warming of the global climate system is unequivocal, human influence on the climate system is clear, and limiting climate change will require substantial and sustained reductions of greenhouse gas emissions. Substantial Australian impacts include more frequent and more extreme weather events and a continued decline in rainfall in southern Australia – for more information see the Australian government website <http://www.climatechange.gov.au/climate-change>

### Renewable Energy Target (RET)

In February 2014, the review of the RET scheme was announced by the Commonwealth Government. The review is to examine the operation, costs and benefits of the RET scheme including the economic, environmental and social impacts. The RET aims to achieve at least 20% of renewable energy by 2020. It was due to report in the middle of the year.

### National Health & Medical Research Council (NHMRC)

In February 2014 the NHMRC released its draft information paper on wind farms and health, which found that there is no reliable or consistent evidence that proximity to wind farms or wind farm noise directly causes health effects. Experts in social psychology, sleep, environmental epidemiology, and sound/acoustic engineering, were convened to oversee the review. The draft paper can be found at <http://consultations.nhmrc.gov.au>



## Community Open Days to be held in Coolah & Cassilis

We are having two public open days for the LRWF during the exhibition of the environmental assessment to assist the community to view the wind farm layout and general project information.

The first exhibition open day will be held in Coolah from 12pm – 7pm on Monday the 8<sup>th</sup> of September and then 11am – 6pm in Cassilis on Tuesday the 9<sup>th</sup> of September.

The exhibition of the EA is the public's opportunity to view and discuss any queries or concerns about the project.

In attendance will be Epuron project managers, visual & noise specialists, large printed maps, photomontages and feedback forms. Members of the Community Consultation Committee have agreed to meet at 5pm at the Open Days if they are available.

We look forward to seeing you at one of the open days and thank you for your continued support.

## Open Day Information

**Event:** Exhibition Open Day 1  
**Date:** Monday 8th September  
**Time:** 12 noon to 7pm  
**Venue:** Coolah Sports Club  
7 Goddard St Coolah

**Event:** Exhibition Open Day 2  
**Date:** Tuesday 9th September  
**Time:** 11 am to 6pm  
**Venue:** Cassilis Bowling Club  
Mudgee Rd Cassilis

## Please send us your feedback

### Write to us:

Liverpool Range Wind Farm  
Level 11, 75 Miller Street  
North Sydney NSW 2060

### Email or Internet:

[info@epuron.com.au](mailto:info@epuron.com.au)  
[www.epuron.com.au](http://www.epuron.com.au)

### Phone us:

02 8456 7400



**A copy of the EA  
will be available  
at each Open  
Day for viewing**