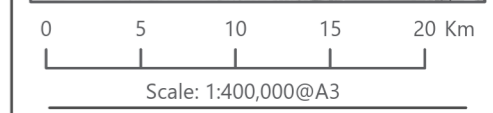
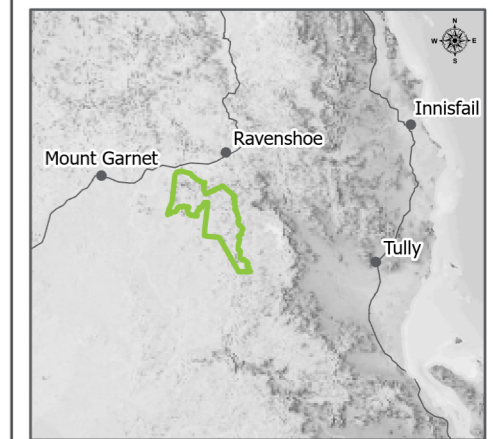


Chalumbin Wind Farm
Cumulative Assessment

Figure 13

- Project Area Boundary
- ZTV Investigation Area
- Source of Cumulative Impact
- Proposed Wind Farm
- Approved Wind Farm
- Existing Wind Farm
- Road
- Watercourse
- WTQ Boundary

Date: 20/10/2022 Author: TOD
Project: EPU-004 Reviewed: NOD







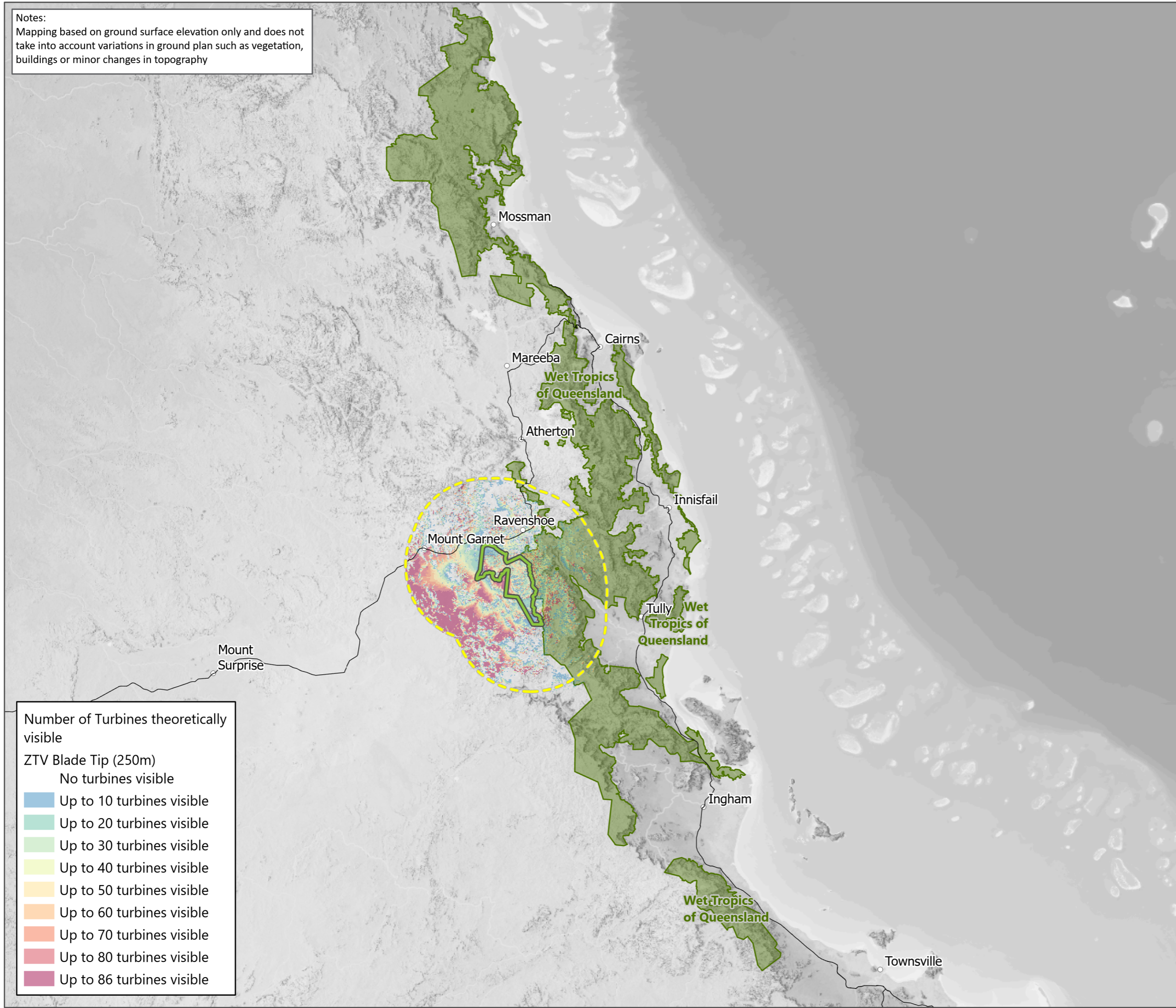
Data Source(s):
Digital Cadastral Database - Department of Resources (2022)
Earthstar Geographics, © State of Queensland (Department of Resources) 2022




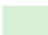
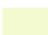





Notes:
 Mapping based on ground surface elevation only and does not take into account variations in ground plan such as vegetation, buildings or minor changes in topography

Chalumbin Wind Farm
 Hub Height VAM (ZTV)
 Assessment - Visual Analysis Map:
 Number of Visible Turbines

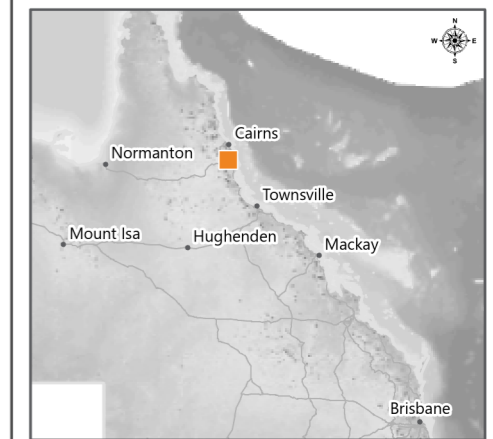
Figure 14

-  Project Area
-  ZTV Investigation Area
-  Highway
-  WTQ Boundary



- Number of Turbines theoretically visible**
 ZTV Blade Tip (250m)
-  No turbines visible
 -  Up to 10 turbines visible
 -  Up to 20 turbines visible
 -  Up to 30 turbines visible
 -  Up to 40 turbines visible
 -  Up to 50 turbines visible
 -  Up to 60 turbines visible
 -  Up to 70 turbines visible
 -  Up to 80 turbines visible
 -  Up to 86 turbines visible

Date: 20/10/2022 Author: TOD
 Project: EPU-004 Reviewed: NOD



0 10 20 30 40 Km
 Scale: 1:1,500,000@A3

Data Source(s):
 Local Government Area - Department of Resources (2022)
 © State of Queensland (Department of Resources) 2022