

Burrendong Wind Farm

CCC Meeting Project Update

Thursday 17 November 2022



ARK ENERGY

Acknowledgement of Country

We acknowledge the Traditional Custodians of the land upon which we meet and their continuing connection to lands, waters and communities.

We pay our respects to Elders past, present and emerging.



Introductions

- Sale of Epuron completed and brand retired. Company is now Ark Energy, leading Australian renewable energy company and subsidiary of Korea Zinc, first global refiner to join RE100 and commit to powering global operations from 100% renewable energy by 2050.
- No change to project as a result of change of ownership.

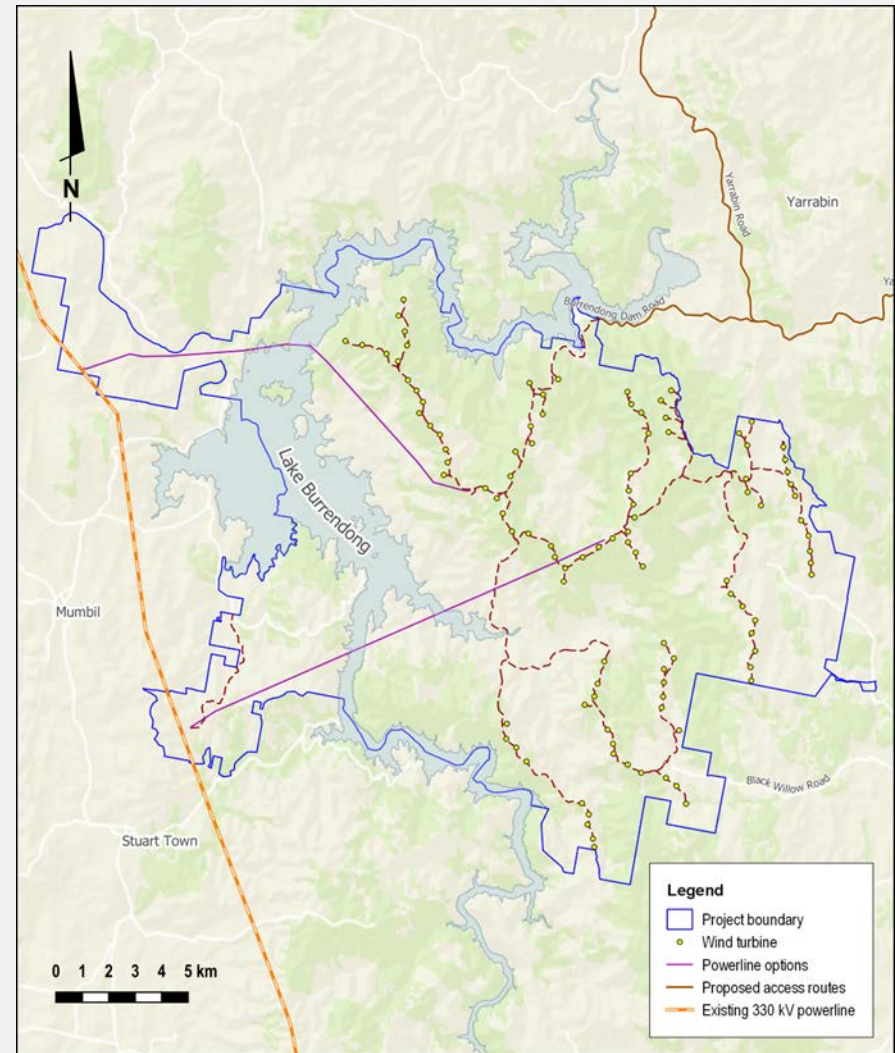
Ark Energy

- Andrew Wilson General Manager - Development NSW
- Melissa Pisani Communications and Community Engagement



Project overview

- Located to the east of Burrendong Dam
- Within Central West Orana Renewable Energy Zone
- Grid connection to existing TransGrid 330kV network
- Up to 105 wind turbines and around 650MW capacity
- Assessed as a Major Project under Part 4 of the NSW *Environmental Planning and Assessment Act 1979* (EP&A Act)



Project stage

Project is due to lodge Environmental Impact Statement (EIS) Q2 2023



Planning and approval process

- Updated Scoping Report accepted by DPE – 14 Sep 2022
- Updated SEARs issued by DPE – 30 Sep 2022
- Clarification of requirements with DPE & agencies – in progress
- Preparation of EIS by proponent – in progress
- EIS adequacy review by DPE
- EIS on exhibition and public submissions



Landscape and visual impact

- Requirements outlined in *Wind Energy: Visual Assessment Bulletin*.
- Dwellings located within 3.35 km of wind turbines given detailed consideration.
- Representative viewpoints selected for clusters of dwellings.
- Photomontages are one of the tools used for visual assessment.
- Photomontage guidelines – *Scottish Natural Heritage Visual Representation of Wind Farms*.
- Photomontages from selected representative public viewpoints and representative dwellings.



Noise impact assessment

- Criteria and methodology for wind farm noise assessment set by DPE *Wind Energy: Noise Assessment Bulletin*
- Predicted equivalent noise level at a non-associated dwelling must not exceed 35 dB(A) or the ambient background noise by more than 5 dB(A), whichever is greater
- Operational wind turbine noise is predicted using acoustic modelling
- A noise and vibration impact assessment will assess other noise impacts including construction and traffic noise



Biodiversity assessment

- Initial assessments were undertaken to identify the presence of any threatened species, populations and ecological communities listed under the NSW Biodiversity Conservation Act and the Commonwealth EPBC Act.
- A Biodiversity Development Assessment Report (BDAR) will be prepared in accordance with the Biodiversity Assessment Method 2020
- The BDAR will identify the biodiversity offset obligation as a result of the project biodiversity impacts and the associated biodiversity credits required
- The project is a controlled action under the EPBC Act and will be assessed under a bilateral agreement with NSW DPE



Other matters

- **Aboriginal Cultural Heritage**
 - Consultation with Registered Aboriginal Parties (RAPs) including Mudgee LALC, Corroboree Aboriginal Corporation, Gunjeewong, Murong Gialinga Aboriginal & Torres Strait Islander Corporation, Wellington Valley Wirandjuri Aboriginal Corporation, Binjang Wellington Wiradjuri Heritage Survey & Wellington Aboriginal Action Party
 - Site archaeological survey with archaeologists and RAPs
 - Avoidance and mitigation measures identified
- **Traffic**
 - Consultation with road authorities
 - Assessment of potential traffic impacts on road network, road safety & others
- **Bush Fire Hazards & Risks**
 - Potential risk of wind farm causing bush fires
 - Potential impacts on aerial fighting of bushfires
- **Decommisioning**
 - All above ground infrastructure to be removed and land rehabilitated at the end of operations



Expected Timeline

- Updated environmental assessments – Q2 2023
- EIS exhibition – Q3 2023
- NSW and Federal approvals – Q4 2023/Q1 2024
- Procurement & pre-construction – 2024
- Project construction commencement – 2025



Discussion



Thank you

Andrew Wilson

General Manager – Development, NSW

Ark Energy

Burrendong Wind Farm

1800 731 296

info@burrendongwindfarm.com.au

www.burrendongwindfarm.com.au

