

# Rye Park Wind Farm

EPURON

Project Update No 9 | April 2014

## Project Update

The Rye Park Wind Farm is a 126 wind turbine development project. Over the last few months the development team has been busy completing the remaining site survey work and finalising the Environmental Assessment (EA) in readiness for public exhibition.

The NSW Department of Planning & Infrastructure (DPI) will publicly exhibit the EA from 2 May to 4 July and details will be advertised by them in local papers beforehand. See exhibition details outlined below.

We would like to take this opportunity to thank the many stakeholders, including community members who have contributed to the preparation of the EA. The communities' suggestions and their feedback on the project have all been very helpful in producing, what we believe, is a thorough and well developed wind farm.

- 1 Submit Preliminary Environmental Assessment and request for Part 3A assessment to DPI. \*
- 2 Director General's Requirements issued by DPI.
- 3 Preparation and submission of the Environmental Assessment to DPI.
- 4 Adequacy review by DPI to decide if Environmental Assessment is acceptable for exhibition.
- 5 **WE ARE HERE. Environmental Assessment publicly exhibited by DPI for review & comment.**
- 6 Epuron responds to submissions.
- 7 Assessment and Determination by the Minister

### Stages of the Environmental Assessment Process

\* On 21 March 2014 the Planning Minister announced the transition of the project from transitional Part 3A to 'State Significant Development' under Part 4 of the EP&A Act 1979.

## Public Exhibition – Have Your Say

DPI exhibition dates – Friday 2 May 2014 to Friday 4 July 2014

DPI viewing locations – during normal business hours at:

- Yass Valley Council, 209 Comur Street, Yass.
- Yass Valley Council Library, Memorial Hall, Comur Street, Yass.
- Boorowa Council, 6-8 Market Street, Boorowa.
- Boorowa Council Library, Cnr Market and Pudman Streets, Boorowa.
- Upper Lachlan Council, 123 Yass Street, Gunning.
- Upper Lachlan Council, 44 Spring Street, Crookwell.
- Nature Conservation Council, Level 2, 5 Wilson Street, Newtown.
- Planning & Infrastructure, Information Centre, 23-33 Bridge St, Syd.

The EA documents may also be viewed on the DPI website at <http://www.planning.nsw.gov.au>. Any person wishing to make a submission must ensure it reaches the DPI by Friday 4 July 2014.

The DPI online submission form for this project can be found at <http://www.majorprojects.planning.nsw.gov.au/page/on-exhibition>.



## Community Open Day to be held at the Rye Park Hall

We are having a community open day for the proposed wind farm during the public exhibition of the environmental assessment to assist the community to view the wind farm layout and general project information.

The Project Manager and other members of the development team will be available throughout the day (9am to 5pm) to discuss the proposal on exhibition.

The exhibition of the EA is your opportunity to view details about the project and have your say about the merits of it.

The proposed wind farm layout and a range of public road photomontages will be on display including general information about wind energy.

We look forward to seeing you at the community open day and thank you for your continued support.

**Event: Community Open Day**

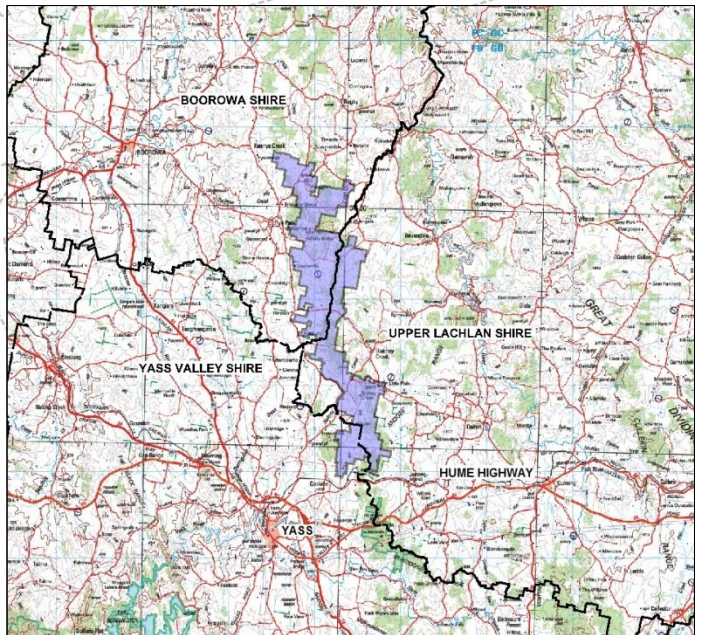
**Date: Wed 21 May 2014**

**Time: Opens 9am, closes 5pm**

**Venue: Rye Park Memorial Hall**

## Project Locality Map

- 126 wind turbines proposed.
- The project site is located across three local government areas;
  - Boorowa
  - Yass Valley
  - Upper Lachlan
- Existing Transgrid 330kV transmission line crosses the southern section of the site.
- Yass is located about 10km to the south.



## Industry News

### Australian Medical Association (AMA)

In March 2014 the AMA released their Position Paper which states there is no credible evidence that wind farms have a negative impact on the health of people who live near them. The paper found infrasound and low-frequency sound generated by modern wind farms in Australia is well below the level where known health effects occur. The paper can be found at <https://ama.com.au/position-statement/wind-farms-and-health-2014>

### Intergovernmental Panel on Climate Change (IPCC)

The fifth report from the IPCC was released in March 2014 confirming warming of the global climate system is unequivocal, human influence on the climate system is clear, and limiting climate change will require substantial and sustained reductions of greenhouse gas emissions. Substantial Australian impacts include more frequent and more extreme weather events and a continued decline in rainfall in southern Australia – for more information see the Australian government website <http://www.climatechange.gov.au/climate-change>

### Renewable Energy Target (RET)

In February 2014, the review of the RET scheme was announced by the Commonwealth Government. The review is to examine the operation, costs and benefits of the RET scheme including the economic, environmental and social impacts. The RET aims to achieve at least 20% of renewable energy by 2020.

**To make a submission of support email <https://retreview.dpmc.gov.au/online-submissions> by May 16, 2014.**

### National Health & Medical Research Council (NHMRC)


In February 2014 the NHMRC released its draft information paper on wind farms and health, which found that there is no reliable or consistent evidence that proximity to wind farms or wind farm noise directly causes health effects. Experts in social psychology, sleep, environmental epidemiology, and sound/acoustic engineering, were convened to oversee the review. The draft paper can be found at <http://consultations.nhmrc.gov.au>

## Community Consultation Committee


The most recent meeting of the Community Consultation Committee (CCC) was held on 30 April 2014. The CCC has met on seven occasions over the last 1-2 years to review project information and provide feedback where required. This feedback has been incorporated into the design of the wind farm where possible. The CCC continues to discuss key aspects of the project including local impacts and the proposed establishment of a community enhancement fund.

### Please send us your feedback


#### Write to us:

 Rye Park Wind Farm  
Level 11, 75 Miller Street  
North Sydney NSW 2060

#### Email or Internet:

 [b.hall@epuron.com.au](mailto:b.hall@epuron.com.au)  
[www.epuron.com.au](http://www.epuron.com.au)

#### Phone us:

 02 8456 7400