

Boomer Green Energy Hub



Photograph of the project area

New owner

The Boomer Green Energy Hub (formerly Boomer Range Wind Farm), proposed for north-west of Rockhampton and south-west of Marlborough, is now part of the Ark Energy portfolio.

Ark Energy completed a friendly acquisition of the project's previous owner, Epuron, in May 2022 and in October the Epuron brand was retired. Ark Energy is a major renewable energy company with a proud 25-year history in Queensland through its sister company, the Sun Metals Zinc Refinery in Townsville, which is the largest private sector employer in the region, and the co-located Sun Metals Solar Farm, which is the largest integrated industrial solar farm in Australia. Ark Energy also owns 30% of the MacIntyre Wind Farm under construction south-west of Warwick.

Project update

Based on wind data and preliminary site investigations the project now has an initial design of 151 wind turbines – see map overleaf – with an estimated output capacity of 1,100 megawatts (MW).

Ark Energy is also in the early stages of feasibility studies for adding solar to the project, to optimise the planned new electrical infrastructure.

Ecological assessment work has commenced with ecology surveys across the project area, and other various specialist studies required for the development application are underway.

Earlier this month Ark Energy also referred the project to the Australian Department for Climate Change, Energy the Environment and Water for review under the Commonwealth *Environment Protection and Biodiversity Conservation Act 1999* (EPBC Act). After reviewing the referral DCCEEW will determine the process for the project's Commonwealth assessment.

Working with the Traditional Owners

Ark Energy and the Boomer Green Energy Hub project team recognise the continuing connection that Aboriginal and Torres Strait Islander Peoples have to their land and the Boomer Green Energy Hub project area is Barada Kabalbara Yetimarala Peoples country. The project team have undertaken a site visit with the Barada Kabalbara Yetimarala and will work with the Traditional Owners and their representatives to ensure protection of cultural heritage sites within the project area and develop a land use agreement with meaningful benefits.

Opportunities to be involved

Questions and feedback are welcome at any time and where practicable we will try to incorporate input from community members into the project to improve outcomes and benefits.

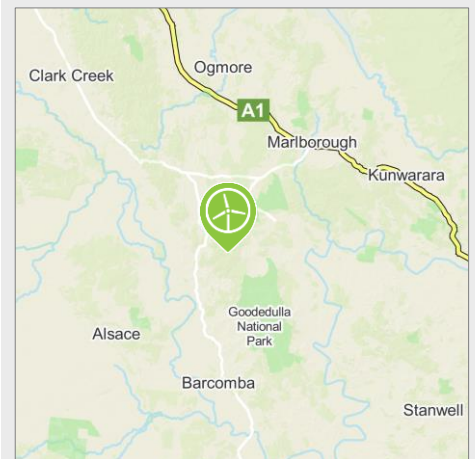


Comments can be sent to the project team via info@boomerhub.com.au or the feedback form available under the 'Feedback' tab on the website: boomerhub.com.au

Thank you to everyone who attended the community information sessions in Marlborough and St Lawrence in March.

The next local community information sessions will be held in early 2023.

Location



The Boomer Green Energy Hub is approximately 90 km north-west of Rockhampton and 30 km south-west of Marlborough in central Queensland.

The project area is in the proposed Central Queensland Renewable Energy Zone, an area identified as optimal for new renewable energy generation.

- Investment of ~\$2.7 billion.
- Estimated to generate ~\$600 million in local and regional expenditure.
- Estimated to create ~300+ jobs during construction and ~20 full-time jobs for operation.
- Target completion: 2027
- Capacity of ~1,100 MW, equivalent to the electricity requirements of ~720,000 homes.
- Result in a net reduction in greenhouse gas emissions of ~2,900,000 t CO₂-e / yr.

Planning & assessment

Queensland Government

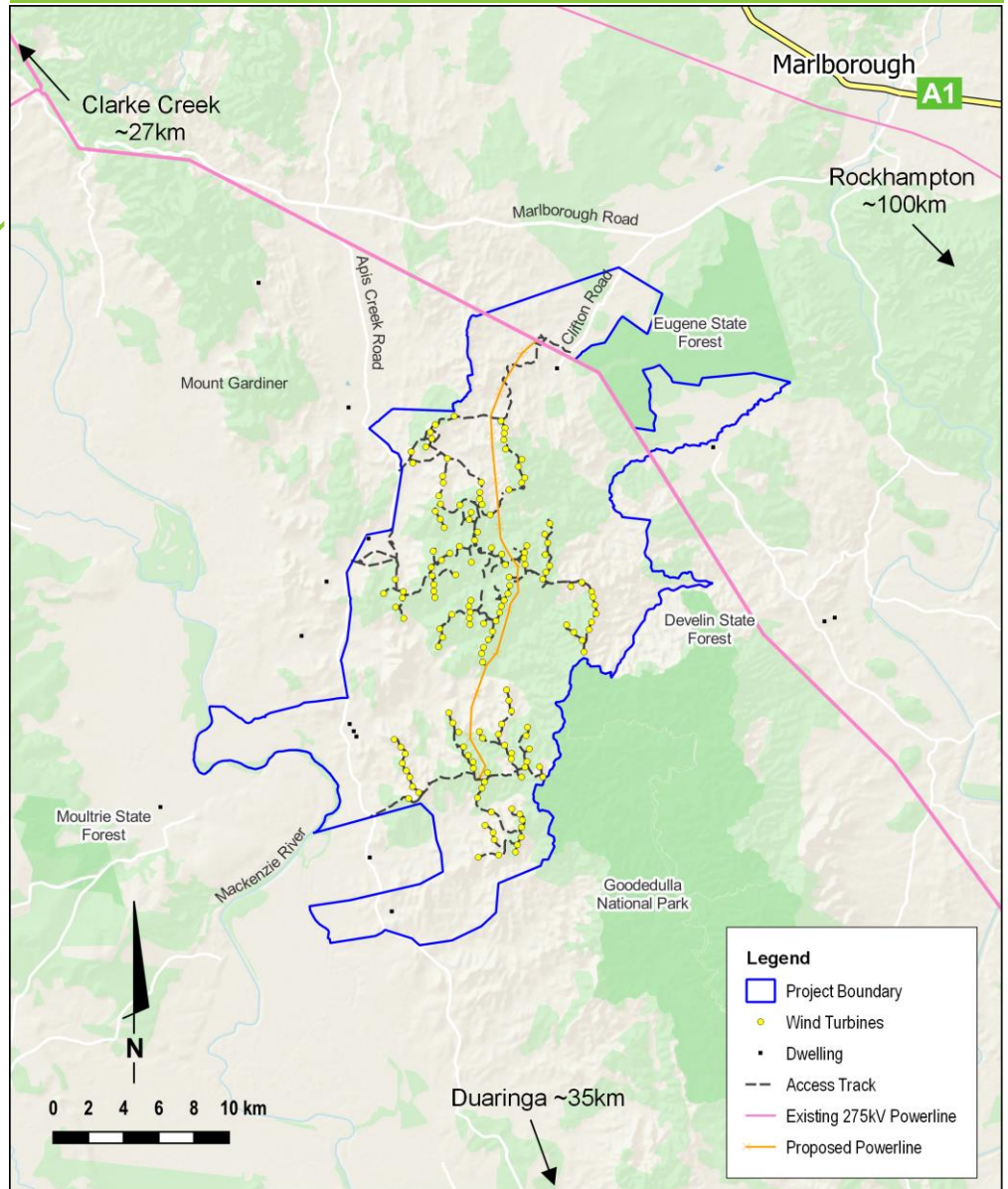
- 1 Site selection, initial concept and preliminary investigations ✓
- 2 Pre-lodgment meeting with the State Assessment and Referral Agency (SARA) ✓
- 3 Studies and assessments (prescribed by SARA State code 23) **WE ARE HERE**
- 4 Development application and assessments lodged with SARA
- 5 Request from SARA for further information (if required) and response
- 6 Assessment
- 7 Determination



Australian Government

- 1 Referral to the Department of Climate Change, Energy, the Environment and Water (DCCEEW) for review under the *Environment Protection and Biodiversity Conservation Act 1999* (EPBC Act) **WE ARE HERE**
- 2 Decision and advice on appropriate assessment pathway
- 3 Preparation of assessment
- 4 Draft assessment submitted for adequacy review
- 5 Request from DCCEEW for further information (if required) and response
- 6 Assessment accepted by DCCEEW and placed on public exhibition
- 7 Response to submissions (if required) and lodgment of updated assessment
- 8 Final assessment submitted
- 9 Determination

Boomer Green Energy Hub site map: 151 wind turbines



The project area is 90 km north-west of Rockhampton and 30 km south-west of Marlborough. The proposal involves 151 wind turbines connected to the existing 275 kV powerline and would have an output capacity of ~1,100 MW, equivalent to the electricity requirements of about 720,000 households.

Changing energy market

The Queensland Government has updated its renewable energy targets, to 70% renewable energy by 2032 and 80% by 2035, including 25 gigawatts (GW) of new large-scale wind and solar, on the way to net zero emissions by 2050.

Renewable energy is the cheapest source of energy and more is urgently needed to reduce carbon emissions, replace fossil fuel sources of energy and meet growing energy demand. The Australian Energy Market Operator (AEMO) through its Integrated System Plan (ISP) predicts that Australia will require nine-times the variable utility-scale renewable energy we have now by 2050, with 50 GW of that predicted to come from Queensland.

Meeting these targets will require harnessing Queensland's considerable renewable energy potential as quickly and efficiently as possible.

More information

Tel - 1800 731 296

Email - info@boomerhub.com.au

Sign-up for newsletters - arkenergy.com.au/mailling-list-details/

Website - boomerhub.com.au or scan QR code right



Scan QR code to visit the website