

# Hellyer Wind Farm



Photomontage showing what Hellyer Wind Farm (and the adjacent proposed Guildford Wind Farm) would look like from Ridgley Highway, near Guide Reservoir.

## Assessment studies to commence soon

The Australian Department of Climate Change, Energy, the Environment and Water has determined the proposal a controlled action under the Commonwealth *Environment Protection and Biodiversity Conservation Act 1999* and the Environment Protection Authority Tasmania (EPA) has issued Project Specific Guidelines identifying the key matters for the Environmental Impact Statement (EIS).

Work on the various studies will commence soon. A key area for assessment is the Tasmanian wedge-tailed eagle. Eagle utilisation across the site will be studied for up to two years (eight seasons). Ark Energy is tracking a number of eagles around the project area using GPS devices as part of a wider research project by the University of Tasmania into how wedge-tailed eagles use the landscape. Independent ecology specialists will also conduct on-ground surveys of eagle flights. Findings from these studies and the various other assessments required, will inform the final wind turbine layout and project design.

Assessment documents are available on the EPA's project page at:  
[epa.tas.gov.au/business-industry/assessment/proposals-assessed-by-the-epa/ark-energy-projects-pty-ltd-hellyer-wind-farm-Hampshire](http://epa.tas.gov.au/business-industry/assessment/proposals-assessed-by-the-epa/ark-energy-projects-pty-ltd-hellyer-wind-farm-Hampshire)

The project's EPBC Act referral and decision (Reference ID 2022/09299) is available on the EPBC Act - Public notices portal: [epbcpublicportal.awe.gov.au/all-referrals](http://epbcpublicportal.awe.gov.au/all-referrals)

## New project owner

In May 2022 Ark Energy completed its friendly acquisition of Epuron, the proponent for the Hellyer Wind Farm, and in October 2022 the Epuron name was retired. Ark Energy is a subsidiary of Korea Zinc, the first major refiner to join RE100 and commit to powering its global operations from 100% clean energy by 2050. There are no changes to the plans for the project as a result of the change in ownership.

## Information sessions

Local information sessions for the project at Ridgley Community Centre and Waratah Men's Shed in June were well attended with residents from Ridgley, Hampshire and Waratah and other interested stakeholders dropping in to speak to the project team, to ask questions and learn more about the proposal. The project team thanks everyone who took the time to attend. We hope it was informative and appreciate the feedback we received. The materials shared at the sessions are available to download from the session report under the 'News' tab on the project website. This includes photomontages to show what the wind farm would look like from example public viewpoints.

The project team will host another local information session in the first half of 2023. Details will be provided in the next newsletter.

## Location



The project area for Hellyer Wind Farm is about 5 km south-west of Hampshire and 30 km south of Burnie in the Burnie City Council area.

It has an excellent wind resource, is used for commercial forestry operations and is traversed by high voltage powerlines.

It is located within one of Tasmania's candidate renewable energy zones, areas identified by the Australian Energy Market Operator as optimal for new renewable energy generation.

The proposal involves up to 48 wind turbines with an output capacity of up to 300 megawatts.

## Planning & assessment

## Hellyer Wind Farm site map – 48 wind turbines

The Development Application will be determined by Burnie City Council and the Environmental Impact Statement (EIS) will be assessed by the Environment Protection Authority Tasmania (EPA).

1 Site selection and preliminary investigations ✓

2 Referral to the Australian Department of Climate Change, Energy, the Environment and Water (DCCEEW) for review under the Commonwealth *Environment Protection and Biodiversity Conservation Act 1999* (EPBC Act). ✓

\* Determined a controlled action with assessment under bilateral agreement (Ref 2022/09299). ✓

3 Notice of Intent lodged with the EPA ✓

4 Project Specific Guidelines for the EIS issued by the EPA **WE ARE HERE**

5 Studies, assessments, site design

6 Design completed, preparing EIS for lodgment

7 Development application (DA) and EIS submitted to Burnie City Council

8 EIS referred by Council to the EPA

9 DA and EIS on exhibition for public comment

10 Responses to submissions and requests for additional information (if required)

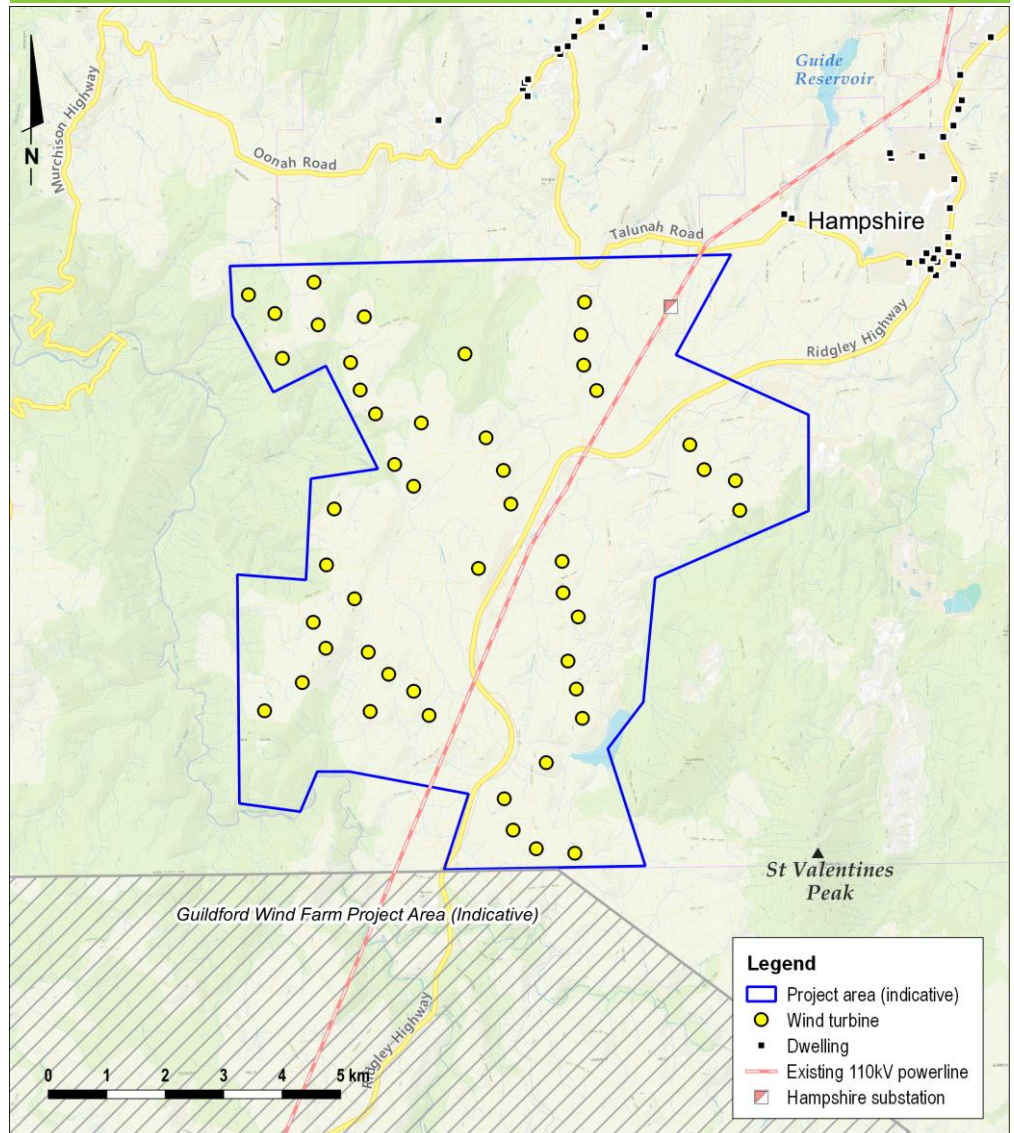
11 Assessment by the EPA

12 Determination by the EPA and approval conditions provided to Council

13 Determination by DCCEEW

14 Assessment by Council

15 Determination by Council



Map above shows the initial proposed layout for the Hellyer Wind Farm of 48 wind turbines. The project is adjacent to the site for another Ark Energy project, Guildford Wind Farm.

### Community benefits

Wind farms generate significant economic benefits for local and regional communities including jobs, contract work and increased patronage for businesses and retail. The project would also involve a community benefit fund. Suggestions on priorities that could be supported by the community benefit fund, can be sent to the project team via email or the feedback form on the project website. We look forward to working with the community to deliver meaningful and lasting local benefits from the project.

### Thank you

Thank you to all those who have engaged with us for this project to date. We welcome input to help shape the project and maximise local benefits. Questions and feedback can be sent to the project team via email to [info@hellyerwindfarm.com.au](mailto:info@hellyerwindfarm.com.au) or the form under the 'Feedback' tab on the website. We wish everyone a safe and enjoyable festive season and look forward to updating you again in early 2023.

### More information

Tel - 1800 731 296

Email - [info@hellyerwindfarm.com.au](mailto:info@hellyerwindfarm.com.au)

Register for updates - [arkenergy.com.au/mailling-list-details](http://arkenergy.com.au/mailling-list-details)

Website - [hellyerwindfarm.com.au](http://hellyerwindfarm.com.au) or scan QR code

