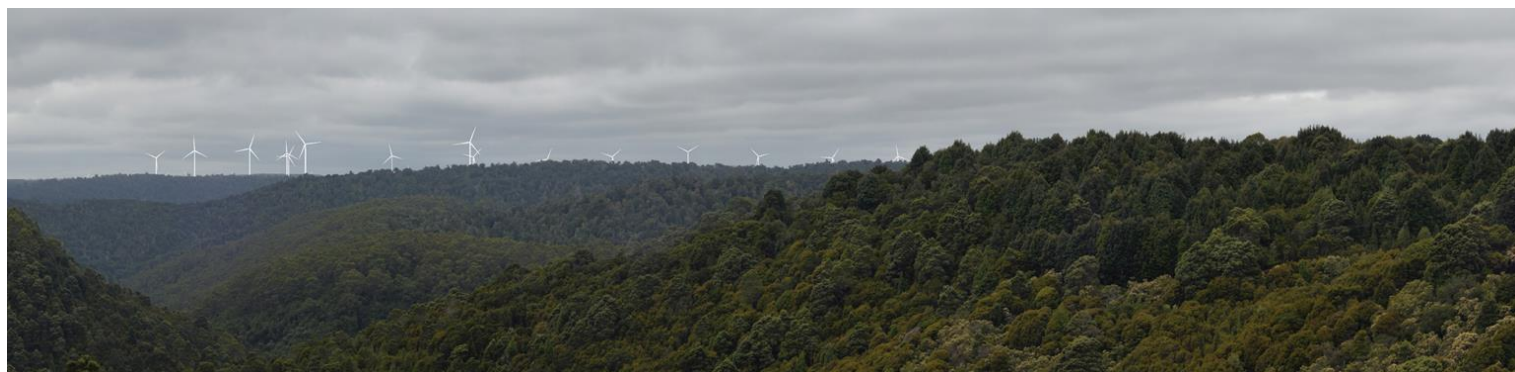


Guildford Wind Farm



Photomontage showing what Guildford Wind Farm would look like from Waratah Falls, in Waratah.

Project assessment update

Studies are underway to address the requirements of the Project Specific Guidelines (PSG) for Guildford Wind Farm issued by the Environment Protection Authority Tasmania. A full year (four out of eight seasons required) of eagle utilisation surveys has been completed by independent specialists and a number of wedge-tailed eagles in the area are being tracked via GPS. Results from the surveys and tracking data will inform a review of the wind turbine layout and the revised layout will be the basis for further studies required by the PSGs, due to commence in 2023.

New project owner

In May 2022 Ark Energy completed its friendly acquisition of Epuron, the proponent for the Guildford Wind Farm, and in October 2022 the Epuron name was retired. Ark Energy is a subsidiary of Korea Zinc, the first major refiner to join RE100 and commit to powering its global operations from 100% clean energy by 2050. There are no changes to the plans for the project as a result of the change in ownership.

Information sessions

Local information sessions for the project at Ridgley Community Centre and Waratah Men's Shed in June were well attended with residents from Ridgley, Hampshire, Waratah and other interested stakeholders dropping in to speak to the project team, to ask questions and learn more about the proposal.

The project team thanks everyone who took the time to attend. We hope it was informative and appreciate the feedback we received. The materials shared at the sessions are available to download from the session report under the 'News' tab on the project website. This includes maps and photomontages to show what the wind farm would look like from example public viewpoints.

The next local information session with the project team will be held in the first half of 2023. Details will be provided in the next newsletter.

Community benefits

Wind farms generate significant economic benefits for local and regional communities including jobs, contract work and increased patronage for businesses and retail.

The project would also involve a community benefit fund. We are interested to hear local views on priorities that could be supported by the community benefit fund. Suggestions can be sent to the project team via email or the feedback form on the project website (details overleaf). We look forward to working with community members and interested stakeholders to deliver meaningful and lasting local benefits from the project.

Location



The project area for Guildford Wind Farm is about 7 km north-east of Waratah and 15 km south of Hampshire in the Waratah-Wynyard Council area.

It has an excellent wind resource, is used for commercial forestry operations and is traversed by high voltage powerlines.

It is located within one of Tasmania's candidate renewable energy zones, areas identified by the Australian Energy Market Operator as optimal for new renewable energy generation.

The proposal involves up to 80 wind turbines with an output capacity of up to 450 megawatts.

Planning & assessment

Guildford Wind Farm site map – 80 wind turbines

The Development Application will be determined by Waratah-Wynyard Council and the Environmental Impact Statement (EIS) will be assessed by the Environment Protection Authority Tasmania (EPA).

1 Site selection and preliminary investigations ✓

2 Referral to the Australian Department of Climate Change, Energy, the Environment and Water (DCCEEW) for review under the Commonwealth *Environment Protection and Biodiversity Conservation Act 1999* (EPBC Act). ✓

* Determined a controlled action with assessment under bilateral agreement (Ref 2020/8797).

3 Notice of Intent lodged with the EPA ✓

4 Project Specific Guidelines for the EIS issued by the EPA ✓

5 Studies, assessments, site design **WE ARE HERE**

6 Design completed, preparing EIS for lodgment

7 Development application (DA) and EIS submitted to Waratah-Wynyard Council

8 EIS referred by Council to the EPA

9 DA and EIS on exhibition for public comment

10 Responses to submissions and requests for additional information (if required)

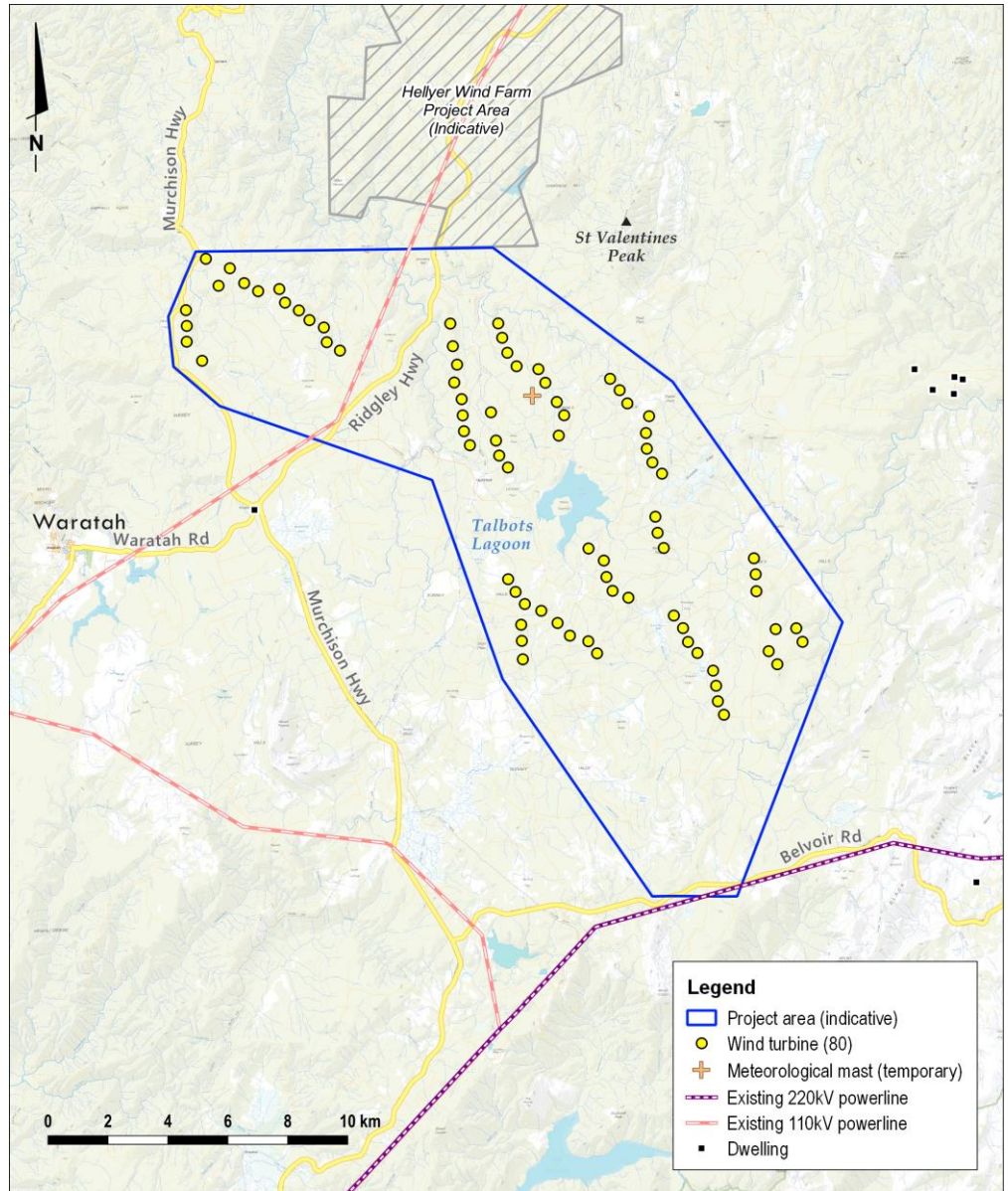
11 Assessment by the EPA

12 Determination by the EPA and approval conditions provided to Council

13 Determination by DCCEEW

14 Assessment by Council

15 Determination by Council



Map above shows the initial proposed layout for the Guildford Wind Farm of 80 wind turbines. The project area is adjacent to the site for another Ark Energy project, Hellyer Wind Farm.

Thank you

Thank you to all those who have engaged with us for this project to date.

We welcome input from community members and other interested parties to help shape the project and maximise local benefits.

Questions and feedback are welcome at any time and can be sent to the project team via email to info@guildfordwindfarm.com.au or the form under the 'Feedback' tab on the website.

We wish everyone a safe and enjoyable festive season and look forward to updating you again in early 2023.

More information

Tel - 1800 731 296

Email - info@guildfordwindfarm.com.au

Register for updates - arkenergy.com.au/mailling-list-details

Website - guildfordwindfarm.com.au or scan QR code

