

# Liverpool Range

## Wind Farm

EPURON

Project Update No 9 | May 2013

### Project Highlights

- The Environmental Assessment (EA) for the Liverpool Range Wind Farm (LRWF) was submitted to the NSW Department of Planning & Infrastructure (DPI) for assessment just prior to Christmas. The EA is currently in the process of being reviewed for adequacy by DPI and is expected to be publicly exhibited in the coming months (dates to be advised).
- As a result of the environmental assessment process and ongoing community consultation, the wind farm turbine layout has recently been reviewed and optimised. Development continues on the powerline route. Refer further details below.
- The first LRWF Community Consultation Committee was held in February this year. Committee members were appointed following the earlier expressions of interest sought from the local community.
- Epuron is seeking feedback on the possible establishment of a community enhancement fund.

### Environmental Assessment Submitted

The EA assesses the potential environmental impacts of the LRWF and highlights the associated key benefits of its development. The EA is being assessed by the DPI as a Major Project under Part 3A of the NSW Environmental Planning and Assessment Act 1979.

We believe the LRWF is generally supported by a majority of the local community and that the public exhibition of the EA will allow the community to continue to make informed decisions about the project. We would like to take this opportunity to thank the many stakeholders and community members who have contributed to the EA.

### Revised Turbine Layout & Powerline Routes

As noted above, as a result of specialist studies forming part of the environmental assessment, adequacy review comments from the DPI, commercial considerations and ongoing community consultation, the LRWF turbine layout has recently been reviewed and optimised from 417 to 288 turbines. We **enclose** an updated layout.

Progress with securing a preferred and alternate powerline route is continuing successfully. Where possible, Epuron has accommodated community feedback into the design which has led to revisions of the original proposed routes. We **enclose** an updated map showing the revised routes.

### Your feedback is important to us

The LRWF Environmental Assessment incorporates the views and feedback of project stakeholders including the local community. Please direct your feedback to the development team using the contact details below.



Liverpool Range Wind Farm  
Level 11, 75 Miller Street  
North Sydney NSW 2060



info@epuron.com.au  
www.epuron.com.au



02 8456 7400



### Wind Farms, Sound & Health

A recent report released by the Victorian Department of Health has found that the inaudible sound caused by wind farms, known as infrasound, is no worse than that from other rural and urban environments.

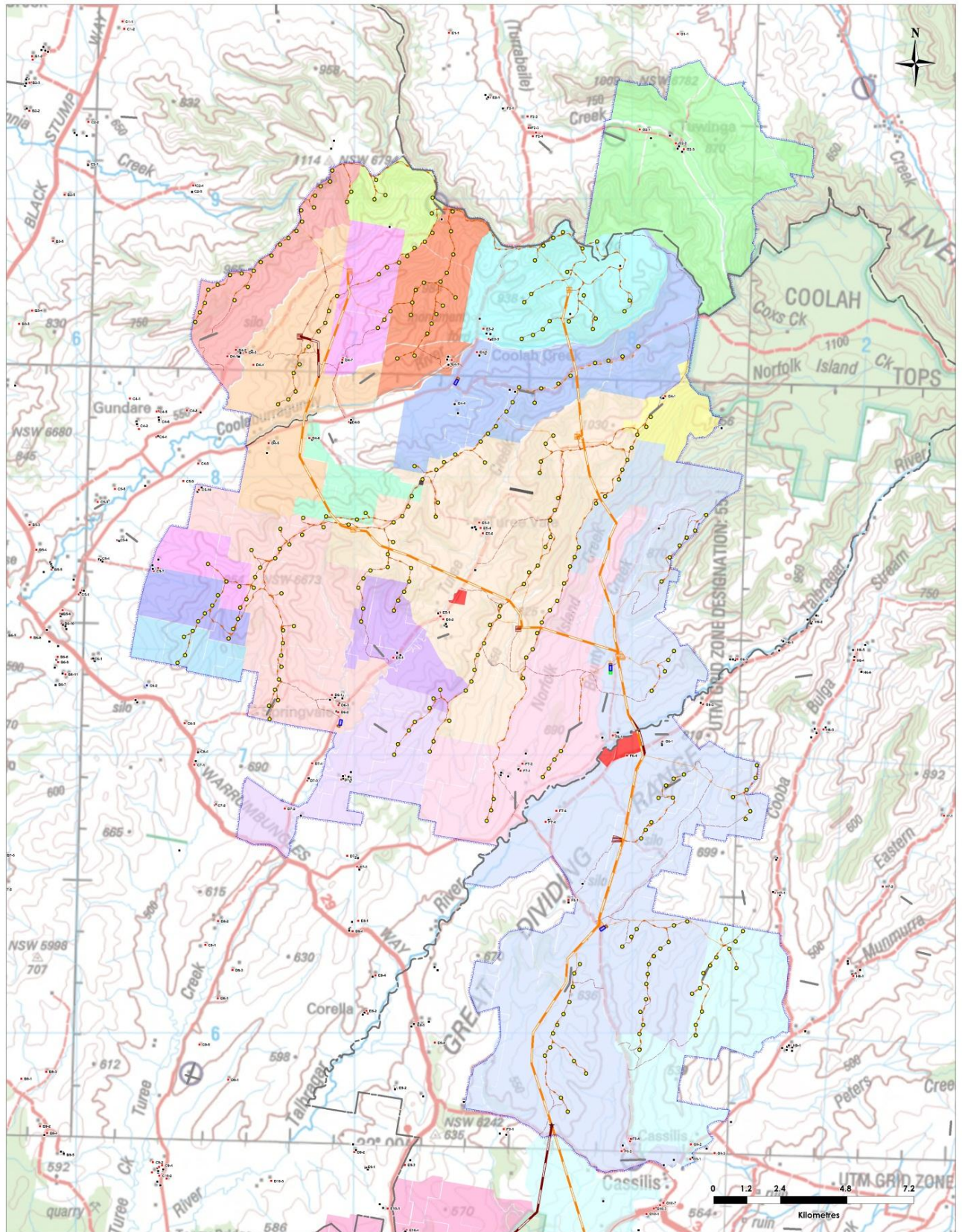
The Health Department review, assessed the evidence and found it does not support claims that inaudible sounds can have direct physiological effects.

The report says infrasound is generated by many sources, such as trains, breaking waves and airconditioners. The department found the evidence showed wind farms produced no more infrasound than the background level in other environments.

A copy of the report can be found on the departments website at [www.health.vic.gov.au/](http://www.health.vic.gov.au/).



Revised Wind Farm Layout



LEGEND

- Site boundary
- Proposed wind turbine
- Preferred overhead powerline
- Alternative overhead powerline
- Preferred substation location
- Alternative substation location
- Proposed access track
- Proposed underground reticulation
- Preferred overhead reticulation
- Alternative overhead reticulation
- Proposed operation & maintenance building
- Proposed construction compound
- Proposed batch plant location
- House
- House Unoccupied
- Other Building
- LGA Boundaries
- + Coollah aerodrome
- Airstrip

**EPURON**

PROJECT

Liverpool Range  
Wind Farm

TITLE

Project Layout 5b  
& Landowners

SCALE	DATE	DRAWN
1:60,000 at A1	16/05/13	MK



## Community Consultation Committee

The first meeting of the Liverpool Range Wind Farm Community Consultation Committee (CCC) was held in Coolah on Thursday 28 February 2013. The Draft NSW Wind Farm Planning Guidelines Wind Farms state.....“wind farm projects will typically require such committees to be established and operated during the assessment and operational phase as appropriate.....”. (these guidelines can be found on the Departments website at <http://www.planning.nsw.gov.au>). Requirements for the operation of the CCC are also included in the Draft Guidelines. A copy of the meeting presentation material and minutes of the meeting are available on the Epuron website at <http://www.epuron.com.au/project/liverpool-range/>

CCC members are:

- Independent Chair – Danielle Annells from Twyfords Consulting
- Upper Hunter Shire Council – Councillor Ron Campbell
- Warrumbungle Shire Council – Tony Meppem
- Liverpool Plains Shire Council - Donna Ausling
- Midwestern Regional Council - Catherine Van Laeren
- Involved landowner – Ant Martin
- Involved landowner – Anne Louise Capel
- Uninvolved landowner – Linda Gant
- Uninvolved landowner – Greg Piper
- Proponent – Brian Hall from Epuron
- Observer – Pauline Dunne from NSW OEH

There is an opportunity for representatives of other local community groups or stakeholders to join the committee. Expressions of interest should be directed to the Independent Chair, Danielle Annells at [danielle@twyfords.com.au](mailto:danielle@twyfords.com.au).

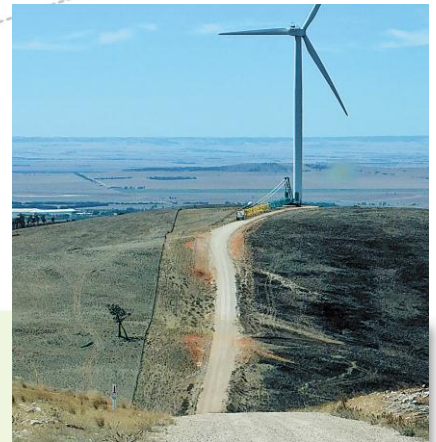
The CCC will be meeting on at least a quarterly basis. It welcomes suggestions and questions from the community which can be addressed to the Independent Chair directly or via a CCC member.

## Community Enhancement Fund

Under the Part 3A planning process, in NSW, contributions from a project to a community enhancement fund are voluntary. As part of the ongoing consultation process for the project, Epuron is seeking feedback on how best to establish a community fund and to identify what type of local support is required from the project.

Each project should be assessed (by DPI) and determined specifically on its merits (and without being influenced by any promise of community or other funding). Epuron believes in the value of community contributions and believes that the final investor who funds the construction and operation of the project should engage with and support the local community, including through annual financial contributions to the community.

Epuron considers that the CCC, working with the developer and ultimate project owner, is ideally placed to help develop a community fund and its administration process. We are committed to an ongoing consultation process to determine an appropriate basis for the establishment of a community fund and welcome your feedback in this regard. Please direct your enquiries to the development team whose contact details are noted on the first page of this newsletter.



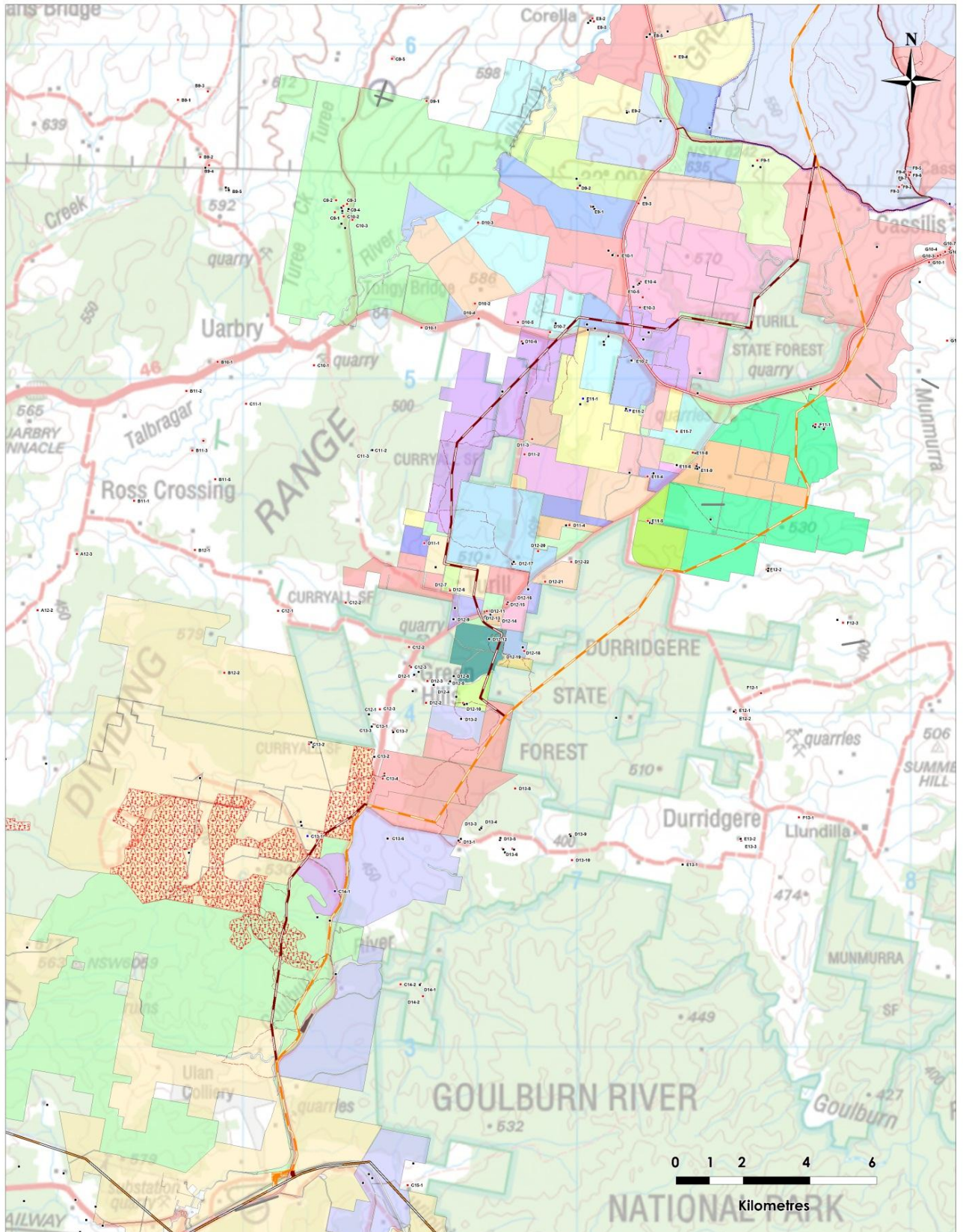
## Wind farm access roads aid firefighters

During recent grass fires in South Australia started by lightning, it was revealed that a significant benefit was brought by the access roads built for a local wind farm.

*“They were absolutely of great benefit in helping us fight the fires,” said the Snowtown Country Fire Service (CFS) Captain. “If it weren’t for the those roads, the fires, which were going at a fair rate of knots, would have just kept going. They acted as a natural fire break, giving us an edge to work back to and enabling us to back burn if we’d needed to. These new access roads provided an unexpected bonus, but they’ll help us control fires in the future.”*

It was said that access tracks installed to build and maintain a wind farm increased the accessibility onsite and therefore had a positive impact on the response time and ability to fight fires onsite or on neighbouring properties.

Notably, in consultation with authorities including the NSW Rural Fire Service and NSW Fire Brigade, a bushfire management plan would be prepared for the LRWF prior to the commencement of construction.



**LEGEND**

- Site boundary
- Preferred overhead powerline option
- Alternative overhead powerline option
- Preferred substation
- Alternative substation
- Minor access road
- Major access road
- Proposed access track
- Airstrip
- Existing 330 kV transmission line
- Ulan Coal Mine Environmental Offset
- House
- House Unoccupied
- Other Building

**EPURON**

PROJECT  
Liverpool Range Wind Farm

TITLE  
Proposed & Alternative Overhead Powerline Options

SCALE	DATE	DRAWN
1:50,000 at A1	16/05/13	MK