

St Patricks Plains Wind Farm



Photomontage showing what St Patricks Plains Wind Farm would look like from Highland Lakes Road near Steppes Hall.

New project owner

In May 2022 Ark Energy completed its friendly acquisition of Epuron, the proponent for the St Patricks Plains Wind Farm, and in October 2022 the Epuron brand was retired.

Ark Energy is a subsidiary of Korea Zinc, the first major refiner to join RE100 and commit to powering its global operations from 100% clean energy by 2050. There are no changes to the plans for the project as a result of the change in ownership.

Community benefits

St Patricks Plains Wind Farm has a Neighbour Benefit Program for owners of dwellings within 3 km of a wind turbine. The program involves an annual payment per wind turbine within 2 km and 3 km. If you are eligible to participate and would like more information please contact the project team (details overleaf).

The project also involves a Community Benefit Fund of \$3,000 per installed wind turbine per annum for the life of the project, which would be \$141,000 (indexed) each year based on the proposed layout. Suggestions for the fund are welcome and can be sent to the project team directly or via the form under the 'Feedback' tab on the project website.

One potential benefit identified by community members is the improvement of mobile and internet coverage around areas of the site where this is currently limited, including parts of Wilburville, Flintstone and Arthurs Lake Road. The project team is making enquiries about this with Telstra and government representatives.

Thank you to everyone who has contacted the project team to date about working on the wind farm, or providing services and accommodation. Your interest has been registered in our database. We will keep you up to date on the wind farm's progress and your details will be passed on to the construction contractor post-approval.

Project update and new information centre

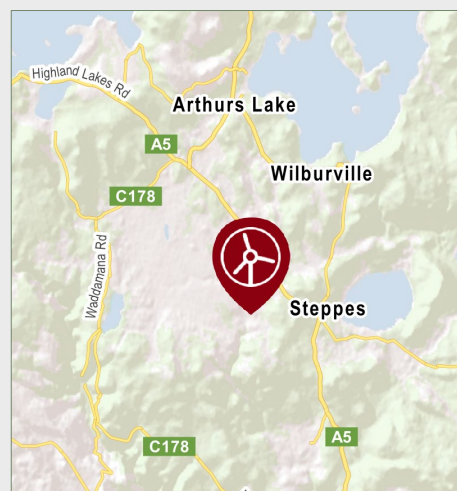
The project team is finalising the Environmental Impact Statement (EIS) and aiming to lodge the final EIS with the Environment Protection Authority Tasmania in early 2023. The EIS would then be placed on public exhibition by Central Highlands Council.



The St Patricks Plains Wind Farm is opening a local information centre at 16a Patrick St, on the corner of Patrick and William Streets, in Bothwell (former location of the information centre for Cattle Hill Wind Farm – pictured left).

The centre will be attended by local resident Jim Poore on Fridays from mid-January 2023. Please check the website for opening times.

Location



The site for St Patricks Plains Wind Farm is about 10 km south-east of Miena and 25 km north of Bothwell in the Central Highlands. It is located within one of Tasmania's candidate renewable energy zones, areas identified by the Australian Energy Market Operator as optimal for new renewable energy generation.

Key project information:

- 47 wind turbines.
- Wind turbine tip height of 231m.
- Up to 300 megawatts of clean, renewable energy.
- Up to 200 jobs during construction and up to 20 jobs during operation.
- Construction period of 24 months.
- Community Benefit Fund for the life of the wind farm.

Planning & assessment

St Patricks Plains Wind Farm site map – 47 wind turbines

The Development Application will be determined by Central Highlands Council and the Environmental Impact Statement (EIS) will be assessed by the Environment Protection Authority Tasmania (EPA).

1 Site selection and preliminary investigations ✓

2 Referral to the Australian Department of Climate Change, Energy, the Environment and Water (DCCEEW) for review under the Commonwealth *Environment Protection and Biodiversity Conservation Act 1999* (EPBC Act).

* Determined a controlled action with assessment under bilateral agreement (Ref 2019/8497).

3 Notice of Intent lodged with the EPA ✓

4 Project Specific Guidelines for the EIS issued by the EPA ✓

5 Studies, assessments, site design ✓

6 Design completed, preparing EIS for lodgment **WE ARE HERE**

7 Development application (DA) and EIS submitted to Central Highlands Council

8 EIS referred by Council to the EPA

9 DA and EIS on exhibition for public comment

10 Responses to submissions and requests for additional information (if required)

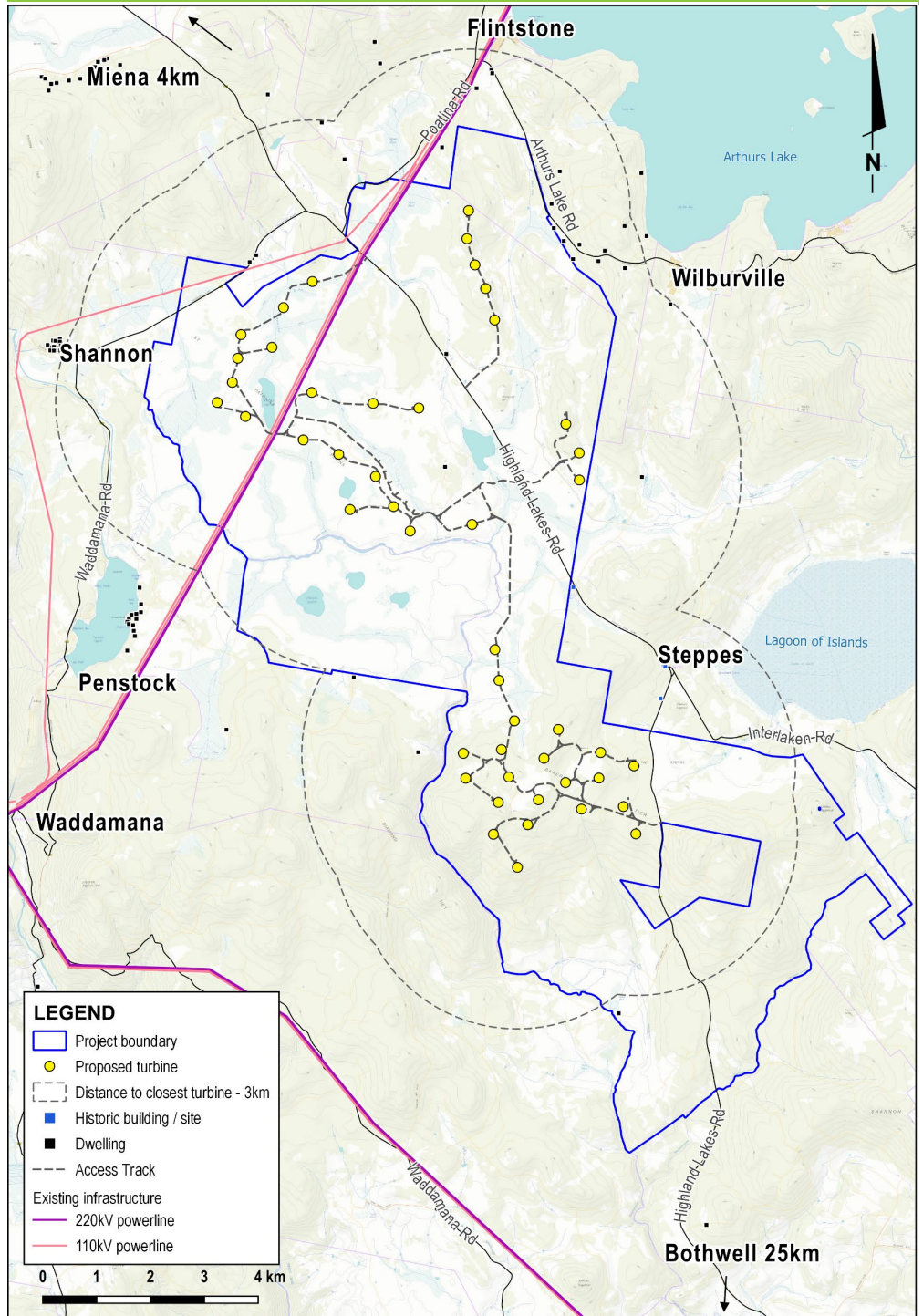
11 Assessment by the EPA

12 EPA approval conditions provided to Council

13 Determination by DCCEEW

14 Assessment by Council

15 Determination by Council



Thank you

Thank you to all those who have engaged with us on this project to date. Questions and feedback are welcome at any time via info@stpatricksplainswindfarm.com.au or the form under the 'Feedback' tab on the website. **We wish everyone a safe and enjoyable festive season and look forward to updating you again in early 2023.**

More information

Visit (from mid-January 2023) - St Patricks Plains Wind Farm Information Centre, 16a Patrick Street, Bothwell. 10am-4pm Fridays unless otherwise advised – please check the website.

Tel - 1800 731 296.

Email - info@stpatricksplainswindfarm.com.au

Register for updates - arkenergy.com.au/mailling-list-details

Website - stpatricksplainswindfarm.com.au or scan QR code



Scan QR CODE to visit the website