

Yass Valley and Conroy's Gap Wind Farms

Project Update | August 2012

Acquisition by Epuron

Epuron announced the acquisition of the Yass Valley Wind Farm and Conroy's Gap Wind Farm projects from Origin Energy on 27 July 2012.

"Both sites have an excellent wind resource and are in close proximity to a number of possible grid connection points on the TransGrid network," Epuron Director Andrew Durran noted. "We look forward to working with the landowners and neighboring community to get both projects to the point where they can be constructed."

Community Consultation Committee

While the project consultation process for both wind farm projects has been underway for some time, Epuron is now seeking to establish the Community Consultation Committee (CCC) in preparation for a first meeting in the coming months.

The purpose and objectives of the CCC are:

- To enable Epuron to formally provide the local community with information about the two proposals;
- To enable the community to express and for Epuron to understand any concerns regarding the potential impacts of the proposals;
- To enable Epuron to consider whether and how to incorporate any suggestions and feedback into the final design of the proposals;
- To demonstrate how and where feedback has been incorporated and resulted in amendments to the final proposals; and,
- To formally advise of potential community benefits that can be integrated into the proposals.

Membership of the CCC is targeted to include the following;

- An independent chairperson;
- A representative of the involved wind farm landowners;
- A representative of the non involved neighbouring landowners;
- Representation from key local stakeholder groups or associations;
- A representative from each of the local councils (Yass Valley Council and Harden Shire Council); and
- Representatives from Epuron including the Project Manager.

If you are interested in joining the CCC, please complete the Nomination Form enclosed and return to us.

For further information on Epuron's Consultation Framework, please refer to our website at <http://www.epuron.com.au/downloads/>

The next steps

Epuron will now recommence consultation with respect to the projects and establish a Community Consultation Committee to assist in this process. Epuron will also develop an ongoing consultation plan for the projects in line with its Community Consultation Framework.

Epuron now aims to complete the additional work required to respond to the submissions received for the Yass Valley Wind Farm and complete the planning approval process to allow both the projects to be connected to the electricity grid.



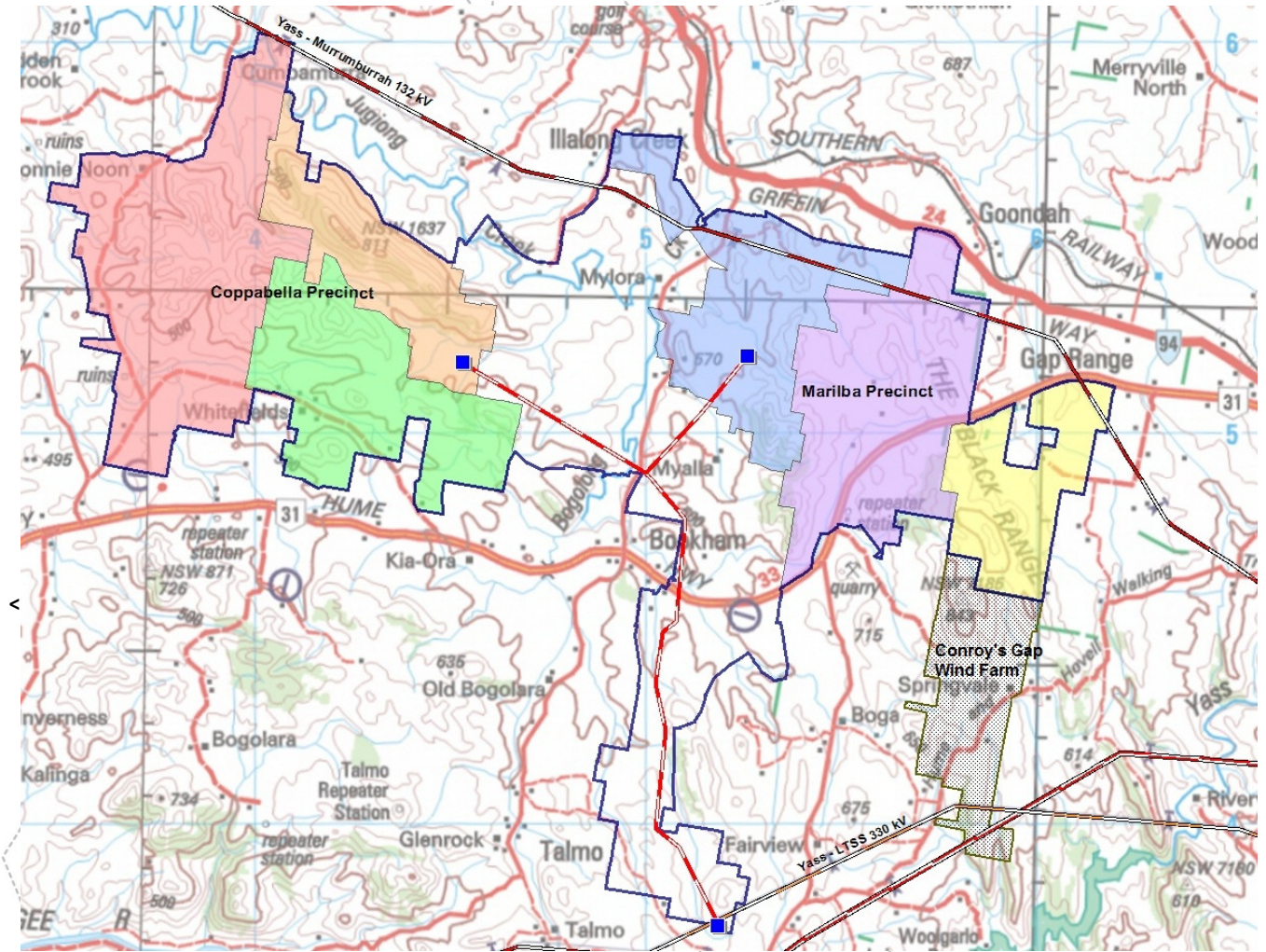
Growing Demand

The demand for projects like the Yass Valley and Conroy's Gap Wind Farms is driven by the Australian Governments Renewable Energy Target (RET). While construction under this target stalled for a number of years, demand for new projects is again growing strongly which should support construction of these wind farms.

Yass Valley and Conroy's Gap Wind Farms

EPURON

Project Update | August 2012



Yass Valley Wind Farm and Conroy's Ridge Wind Farm Site Locations



Representative view of the Yass Valley Wind Farm turbines from the Hume Highway



Yass Valley and Conroy's Gap Wind Farm

EPURON

Project Update | August 2012

About Yass Valley Wind Farm

The Yass Valley Wind Farm is to be located approximately 25km west of Yass and consists of up to 152 turbine locations across two precincts, Coppabella and Marilba. Epuron has been working on the Yass Valley Wind Farm since 2008 and has been assessing the wind resource with a number of wind monitoring masts across the site. After an extensive community consultation program, Epuron submitted the development application and Environmental Assessment (EA) in November 2009.

The EA was placed on public exhibition in November and December 2009. Twenty two submissions were received, sixteen from private individuals and six from government agencies.

Further details of the wind farm and the project Environmental Assessment are available on Epuron's website at

www.epuron.com.au/project/yass-valley/

Conroy's Gap Wind Farm

The Conroy's Gap Wind Farm is to be located approximately 17km west of Yass, and achieved development consent in 2007. The project comprises 15 turbines and a maximum capacity of 30 megawatts, together with the related electrical connections and other infrastructure. It is located to the south of the Hume Highway and adjacent to the proposed Yass Valley Wind Farm. Epuron entered into a contract for the supply of wind turbines for the site in June 2012.

Further details of the wind farm and the project Environmental Assessment are available on Epuron's website at www.epuron.com.au/project/conroys-gap/

About Epuron

Established in 2003, Epuron is a leading Australian renewable energy company with a focus on development of utility-scale wind and solar energy projects.

Epuron is one of Australia's most successful wind farm developers. It has developed the highest yielding wind farm, largest wind farm, the largest number of wind farms, and the largest number of wind turbines in NSW. Epuron continues to develop more projects around NSW.

In solar energy, Epuron's focus is megawatt-scale power generation in both grid-connected and off-grid markets. Its TKLN Solar project is currently under construction in the Northern Territory, ready to supply three remote communities in Australia's outback.

Epuron is working with both mining and utility clients to provide reliable, off-grid power using solar and wind energy to supplement diesel or gas power supplies. Epuron's ability to provide both solar and wind energy, and to integrate these with either diesel or gas generators, sets it apart. Its custom-designed systems provide the maximum renewable energy contribution and fuel savings, and at the same time ensure reliable power generation.

Epuron is Australian-owned and operates out of its office in North Sydney, NSW.

For more information see www.epuron.com.au.

Please send us your feedback

Write to us:



Epuron
Level 11, 75 Miller Street
North Sydney NSW 2060



Email or Internet:

a.wilson@epuron.com.au
www.epuron.com.au

Phone us:

02 8456 7400

Community Consultation Committee

Nomination Form

We are seeking nominations for members from the local community to join the Community Consultation Committee (CCC) for the Yass Valley Wind Farm and the Conroy's Gap Wind Farm.

It is planned that the CCC will meet quarterly (or as otherwise required) at a local venue to be advised.

The purpose and objectives of the CCC are;

- To enable Epuron to formally provide the local community with information about the proposals;
- To enable the community to express and for Epuron to understand any concerns regarding the potential impacts of the proposals;
- To enable Epuron to consider whether and how to incorporate any suggestions and feedback into the final design of the proposal;s
- To demonstrate how and where feedback has been incorporated and may result in amendments to the final projects; and,
- To formally advise of potential community benefits that can be integrated into the proposals.

Nominees Role

Yes, I would like to nominate myself to join the CCC for the Yass Valley and Conroy's Gap Wind Farms in one of the following capacities.

Please tick the relevant box below.

- An independent chairperson
- A representative of the involved wind farm landowners
- A representative of the non involved neighbouring landowners
- Representation from key local stakeholder groups or associations (please provide details of group or association below)

Nominees Details

Name: _____

Address: _____

Phone: _____

Email: _____

Please provide reasons for your nomination: _____



Thank-You for your nomination

Should you require any further information please call us on **02 8456 7400**.

Please return this Nomination Form to:



Address:
Yass Valley & Conroy's Gap
Wind Farms
Level 11, 75 Miller Street
North Sydney NSW 2060



Email or Internet:
a.wilson@epuron.com.au
www.epuron.com.au