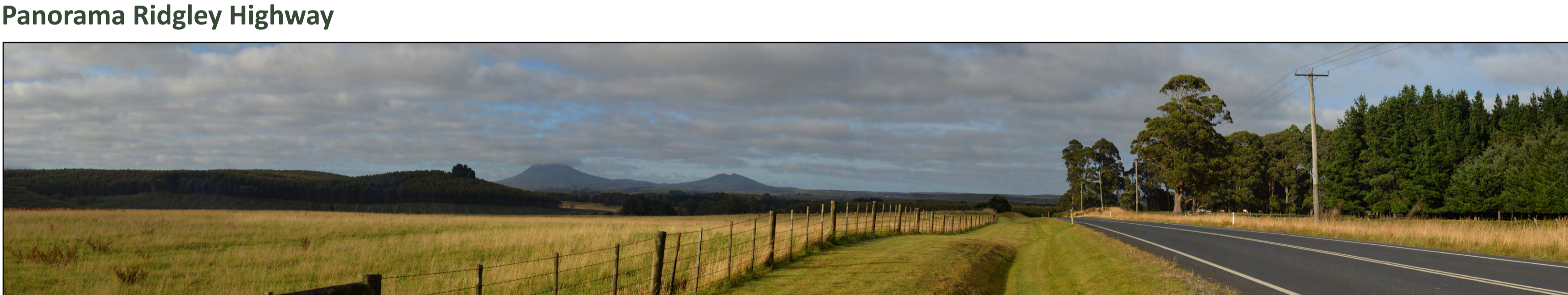
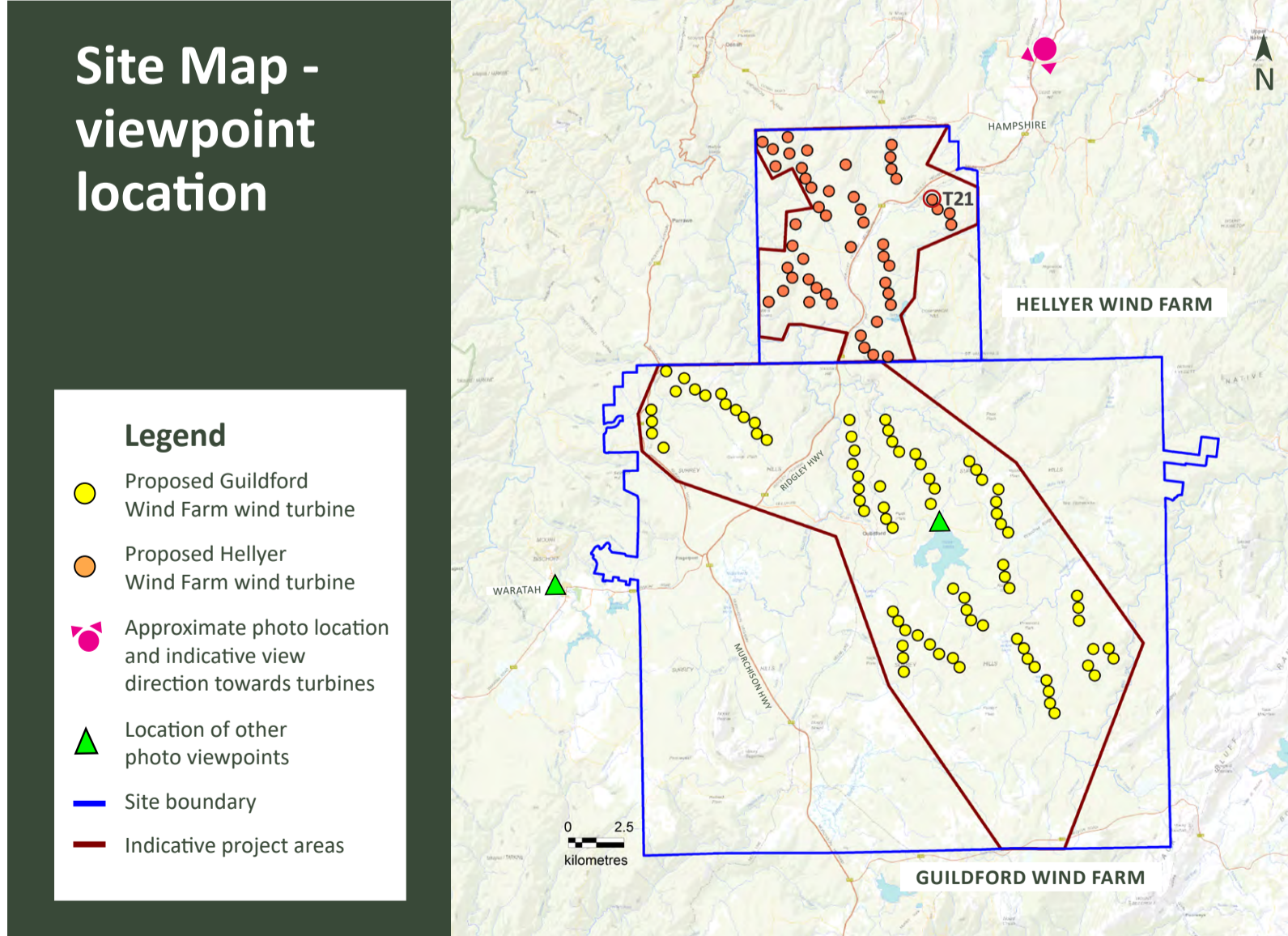
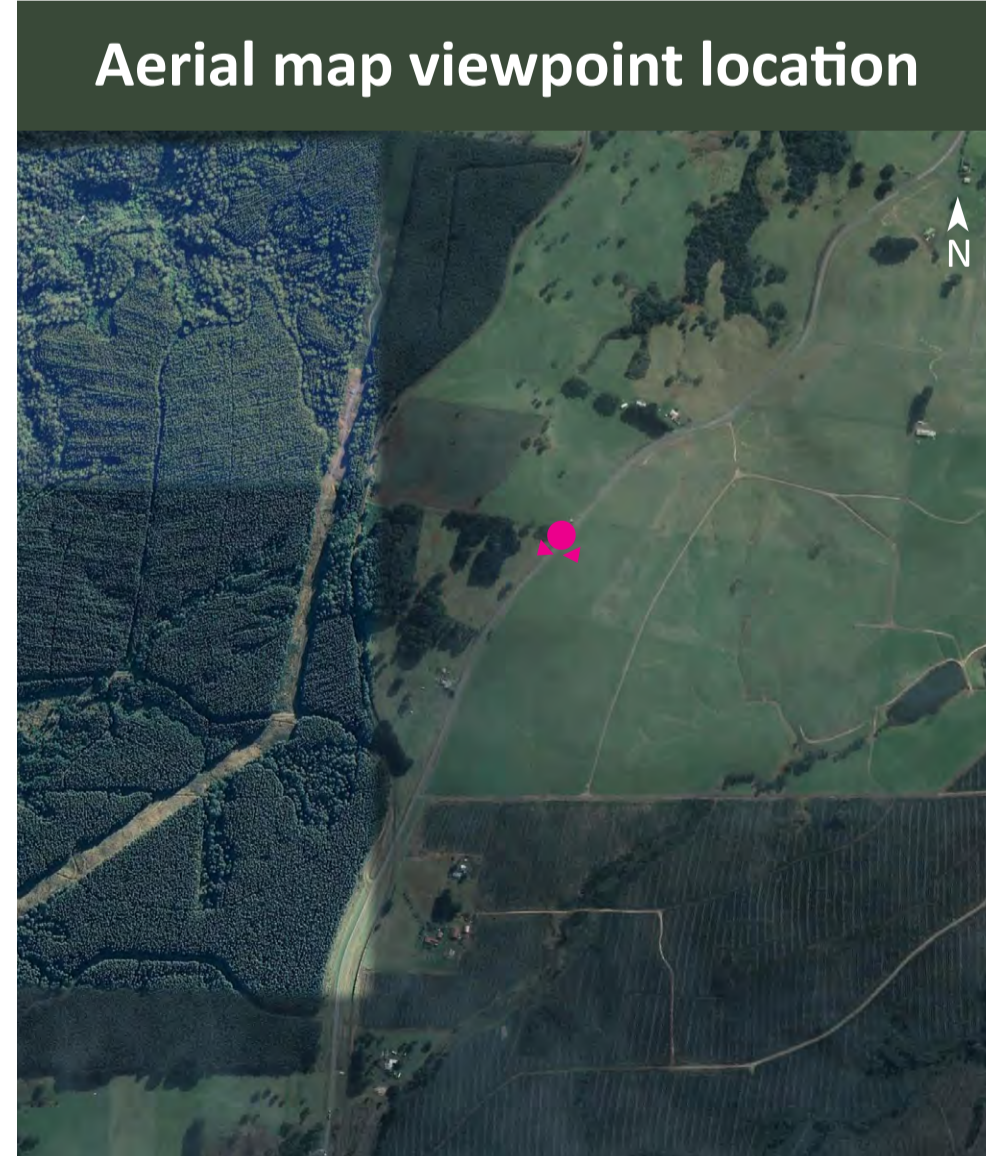
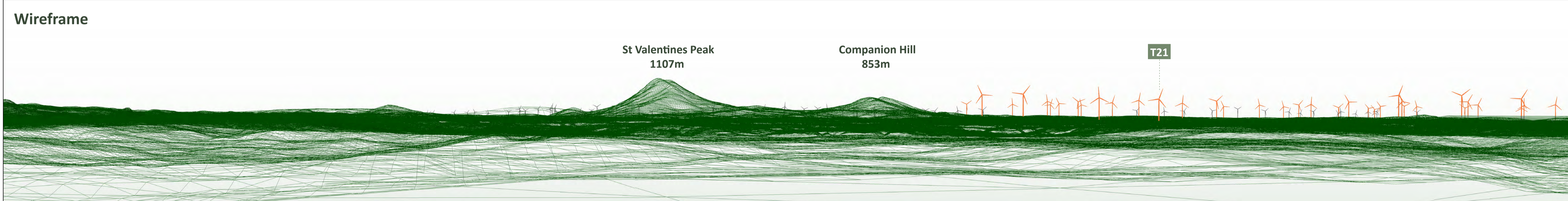


Hellyer Wind Farm - 48 Turbine Layout

Photomontage 78° view from Ridgley Highway: Approximate distance to closest wind turbine is 8,294 metres (turbine 21)



Viewpoint information		
Horizontal field of view: 78°	Elevation: 490m	Projection: MGA Zone 55 (GDA 94)
Bearing to closest visible turbine: 217° (T21)	Photo Taken: 8:23am on 11th of Feb 2021	Original Format: A1 Landscape
Distance to closest turbine (m): 8,294m	Camera: Nikon D810, 50mm Prime Lens	Turbine dimensions: 247m tip height, 166m hub height and 162m rotor diameter
Closest visible turbine is indicated by red line	Photo Coordinates: E: 398653 N: 5434826	

* Photomontage and wireframe provide a representation of the project’s visibility for the purpose of discussion. The layout as shown may be subject to change in accordance with the planning process. The images provide a reasonable impression of wind turbine scale and distance to wind turbines; however they may not be 100% accurate. A static image cannot convey wind turbine blade movement, different lighting, weather and seasonal conditions that vary through time.